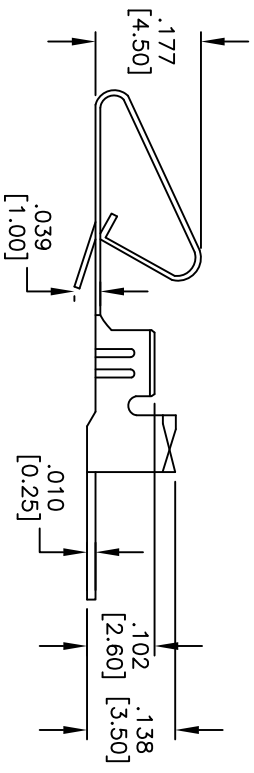
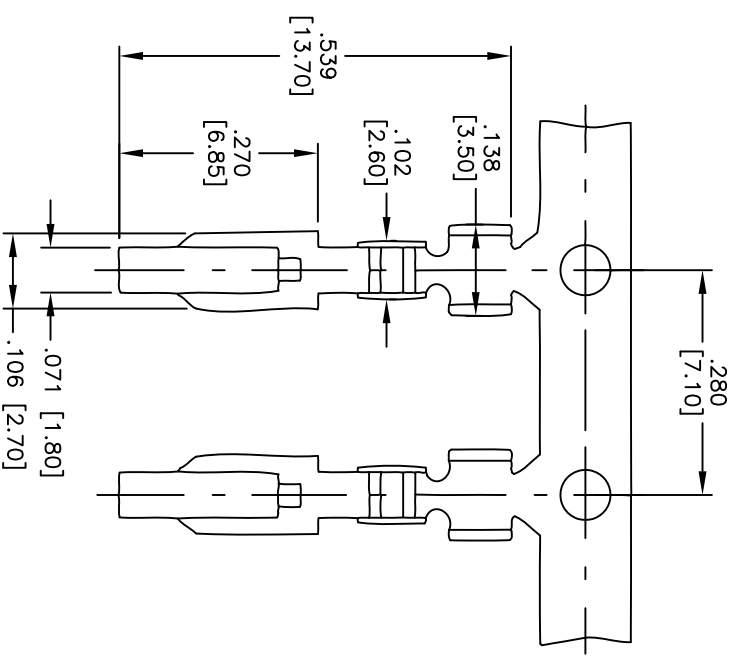


Rev	AWO #	Description	Date	Appr
-		RELEASED	1/24/11	

APPROVED: _____
 DATE: _____ TITLE: _____



SPECIFICATIONS:

- Material: Brass
- Contacts: Brass
- Plating: Tin over Copper underplate overall
- Electrical: Rated voltage: AC/250V, DC/350V
- Rated current: AC, DC, 3A
- Insulation O.D.: 1.57Max.
- Wire range(AWG): 18-24
- Temperature Rating: Operating temperature: -25°C to +85°C
- Environmental: Lead free, RoHS compliant.



ADAM TECH

909 Railway Avenue, Union, NJ 07083
 Phone: 908-687-5000 Fax: 908-687-5710

TITLE: CRIMP CONTACT, MTF SERIES
 TIN PLATED, ON REELS

UNLESS OTHERWISE SPECIFIED ALL DIMENSIONS ARE INCHES [MM]	
TOLERANCES: EXCEPT AS NOTED	
INCHES	HOLDS
.X ± .10	ØX ± .10
.XX ± .020	ØXXX ± .015
.XXX ± .015	ØXXX ± .010
APPROVALS	DATE
DRAWN DY	1/24/11
CHECKED	
APPROVED	

REF: S00099T	SCALE: NTS	SHEET 1 OF 1
--------------	------------	--------------

6 5 4 3 2 1