

# Potential collective terminal - PTU 16/14X2,5 GN



3214015

<https://www.phoenixcontact.com/us/products/3214015>

Please be informed that the data shown in this PDF document is generated from our Online Catalog. Please find the complete data in the user documentation. Our General Terms of Use for Downloads are valid.

Potential collective terminal, nom. voltage: 1000 V, nominal current: 25 A, connection method: Push-in connection, First level connection, interior, Rated cross section: 2.5 mm<sup>2</sup>, cross section: 1 mm<sup>2</sup> - 2.5 mm<sup>2</sup>, Screw connection, 1st level connection left, Rated cross section: 16 mm<sup>2</sup>, cross section: 1.5 mm<sup>2</sup> - 25 mm<sup>2</sup>, mounting type: NS 35/7,5, NS 35/15, color: green



## Your advantages

- The terminal block base is ideal for use in building installation and machine building applications
- In addition to the testing facility in the double function shaft, all terminal blocks provide an additional test connection
- The Push-in connection terminal blocks are characterized by the system features of the CLIPLINE complete system and by easy and tool-free wiring of conductors with ferrules or solid conductors
- The compact design and front connection enable wiring in a confined space

# Potential collective terminal - PTU 16/14X2,5 GN



3214015

<https://www.phoenixcontact.com/us/products/3214015>

## Commercial Data

Item number	3214015
Packing unit	1 pc
Minimum order quantity	10 pc
Sales Key	B02
Product Key	BE2ZWX
Catalog Page	Page 123 (C-3-2015)
GTIN	4046356664226
Weight per Piece (including packing)	41.02 g
Weight per Piece (excluding packing)	41.02 g
Customs tariff number	85369010
Country of origin	DE

# Potential collective terminal - PTU 16/14X2,5 GN



3214015

<https://www.phoenixcontact.com/us/products/3214015>

## Technical Data

### Product properties

Product type	Potential distributor
Number of connections	15
Number of rows	1
Potentials	1

### Insulation characteristics

Overvoltage category	III
Degree of pollution	2

### Electrical properties

Rated surge voltage	8 kV
Maximum power dissipation for nominal condition	2.43 W

### Connection data

Type of additional hybrid connection	UT 2,5
Number of connections per level	15

### First level connection, interior

Internal cylindrical gage	A3
Conductor cross section solid	1 mm <sup>2</sup> ... 2.5 mm <sup>2</sup>
Cross section AWG	18 ... 14
Conductor cross section flexible	1 mm <sup>2</sup> ... 2.5 mm <sup>2</sup>
Flexible conductor cross section flexible (ferrule, w/o plastic sleeve)	0.75 mm <sup>2</sup> ... 1.5 mm <sup>2</sup>
Flexible conductor cross section (ferrule with plastic sleeve)	0.75 mm <sup>2</sup> ... 1.5 mm <sup>2</sup>
Nominal current	25 A (The sum of the individual currents may not exceed the max. value of 80 A)
Maximum load current	25 A (The sum of the individual currents may not exceed the max. value of 80 A)
Nominal voltage	1000 V
Nominal cross section	2.5 mm <sup>2</sup>

### 1st level connection left

Screw thread	M5
Tightening torque	2 ... 3 Nm
Stripping length	12 mm
Internal cylindrical gage	A7
Conductor cross section solid	1.5 mm <sup>2</sup> ... 25 mm <sup>2</sup>
Cross section AWG	16 ... 4
Conductor cross section flexible	1 mm <sup>2</sup> ... 16 mm <sup>2</sup>
Conductor cross section, flexible [AWG]	18 ... 6
Flexible conductor cross section flexible (ferrule, w/o plastic sleeve)	1 mm <sup>2</sup> ... 16 mm <sup>2</sup>

# Potential collective terminal - PTU 16/14X2,5 GN



3214015

<https://www.phoenixcontact.com/us/products/3214015>

Flexible conductor cross section (ferrule with plastic sleeve)	1 mm <sup>2</sup> ... 16 mm <sup>2</sup>
2 conductors with same cross section, solid	1.5 mm <sup>2</sup> ... 10 mm <sup>2</sup>
2 conductors with same cross section, flexible	1.5 mm <sup>2</sup> ... 6 mm <sup>2</sup>
2 conductors with same cross section, flexible, with ferrule without plastic sleeve	1.5 mm <sup>2</sup> ... 6 mm <sup>2</sup>
2 conductors with the same cross section, flexible, with TWIN ferrule with plastic sleeve	1.5 mm <sup>2</sup> ... 6 mm <sup>2</sup>
Nominal current	80 A (with 16 mm <sup>2</sup> conductor cross section)
Maximum load current	80 A (with 25 mm <sup>2</sup> conductor cross section)
Nominal voltage	1000 V
Nominal cross section	16 mm <sup>2</sup>

## Dimensions

Width	17.5 mm
Height NS 35/15	43.5 mm
Height NS 35/7,5	36 mm
Length	89.5 mm

## Material specifications

Color	green
Flammability rating according to UL 94	V0
Insulating material group	I
Insulating material	PA

## Mechanical properties

### Mechanical data

Open side panel	No
-----------------	----

## Environmental and real-life conditions

### Ambient conditions

Ambient temperature (operation)	-60 °C ... 105 °C (max. short-term operating temperature RTI Elec.)
Ambient temperature (storage/transport)	-25 °C ... 60 °C (for a short time, not exceeding 24 h, -60 °C to +70 °C)
Ambient temperature (assembly)	-5 °C ... 70 °C
Ambient temperature (actuation)	-5 °C ... 70 °C ( )
Permissible humidity (storage/transport)	30 % ... 70 %

## Standards and regulations

Connection in acc. with standard	VDE 0609, Part 1/EN 60999-1
	VDE 0609, Part 1/EN 60999-1
	VDE 0609, Part 1/EN 60999-1
	VDE 0609, Part 1/EN 60999-1

## Mounting

# Potential collective terminal - PTU 16/14X2,5 GN



3214015

<https://www.phoenixcontact.com/us/products/3214015>

Mounting type	NS 35/7,5
	NS 35/15

# Potential collective terminal - PTU 16/14X2,5 GN

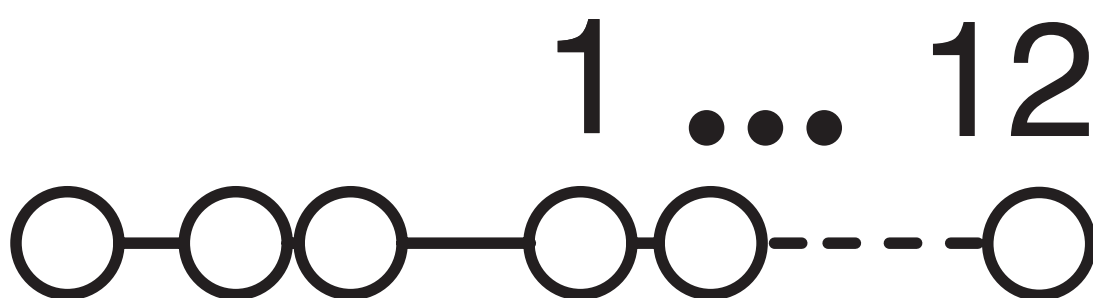


3214015

<https://www.phoenixcontact.com/us/products/3214015>

## Drawings

### Circuit diagram



# Potential collective terminal - PTU 16/14X2,5 GN



3214015

<https://www.phoenixcontact.com/us/products/3214015>

## Approvals



**EAC**

Approval ID: RU C-DE.BL08.B.00644

# Potential collective terminal - PTU 16/14X2,5 GN



3214015

<https://www.phoenixcontact.com/us/products/3214015>

## Classifications

### ECLASS

ECLASS-9.0	27141120
ECLASS-10.0.1	27141120
ECLASS-11.0	27141120

### ETIM

ETIM 8.0	EC000897
----------	----------

### UNSPSC

UNSPSC 21.0	39121400
-------------	----------



# Potential collective terminal - PTU 16/14X2,5 GN



3214015

<https://www.phoenixcontact.com/us/products/3214015>

## Environmental Product Compliance

China RoHS	Environmentally friendly use period: unlimited = EFUP-e
	No hazardous substances above threshold values

# Potential collective terminal - PTU 16/14X2,5 GN



3214015

<https://www.phoenixcontact.com/us/products/3214015>

## Accessories

### Screwdriver

Screwdriver - SZS 1,0X4,0 VDE - 1205066

<https://www.phoenixcontact.com/us/products/1205066>



Screwdriver, slot-headed, VDE insulated, size: 1.0 x 4.0 x 100 mm, 2-component grip, with non-slip grip

---

### Screwdriver

Screwdriver - SZF 2-0,8X4,0 - 1204520

<https://www.phoenixcontact.com/us/products/1204520>



Actuation tool, for ST terminal blocks, also suitable for use as a bladed screwdriver, size: 0.8 x 4.0 x 100 mm, 2-component grip, with non-slip grip

# Potential collective terminal - PTU 16/14X2,5 GN



3214015

<https://www.phoenixcontact.com/us/products/3214015>

## Screwdriver

Screwdriver - SZF 1-0,6X3,5 - 1204517

<https://www.phoenixcontact.com/us/products/1204517>



Actuation tool, for ST terminal blocks, also suitable for use as a bladed screwdriver, size: 0.6 x 3.5 x 100 mm, 2-component grip, with non-slip grip

---

## End clamp

End clamp - CLIPFIX 35 - 3022218

<https://www.phoenixcontact.com/us/products/3022218>



Quick mounting end clamp for NS 35/7,5 DIN rail or NS 35/15 DIN rail, with marking option, width: 9.5 mm, color: gray

# Potential collective terminal - PTU 16/14X2,5 GN

3214015

<https://www.phoenixcontact.com/us/products/3214015>

## End clamp

End clamp - CLIPFIX 35-5 - 3022276

<https://www.phoenixcontact.com/us/products/3022276>



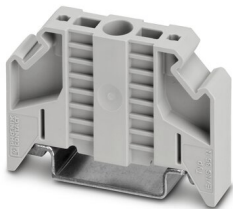
Quick mounting end clamp for NS 35/7,5 DIN rail or NS 35/15 DIN rail, with marking option, with parking option for FBS...5, FBS...6, KSS 5, KSS 6, width: 5.15 mm, color: gray

---

## End clamp

End clamp - E/NS 35 N - 0800886

<https://www.phoenixcontact.com/us/products/0800886>



End clamp, width: 9.5 mm, color: gray

# Potential collective terminal - PTU 16/14X2,5 GN

3214015

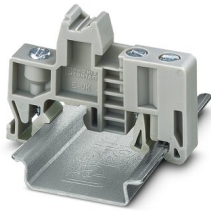
<https://www.phoenixcontact.com/us/products/3214015>

## End clamp

End clamp - E/UK - 1201442

<https://www.phoenixcontact.com/us/products/1201442>

End clamp, material: PA, color: gray, Mounting on a DIN rail NS 32 or NS 35



---

## End clamp

End clamp - E/UK 1 - 1201413

<https://www.phoenixcontact.com/us/products/1201413>

End clamps, for supporting the ends of double-level and three-level terminal blocks, width: 10 mm, color: gray



# Potential collective terminal - PTU 16/14X2,5 GN



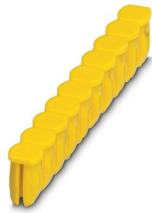
3214015

<https://www.phoenixcontact.com/us/products/3214015>

## Filler plugs

Filler plugs - CEC 2,5 - 3062757

<https://www.phoenixcontact.com/us/products/3062757>



Cover for conductor shaft, 10-pos., for spring cage terminal blocks (ST) and terminal blocks with push-in technology (PT) with a width of 5.2 mm

---

## Mounting material

Mounting material - PT-IL - 3208090

<https://www.phoenixcontact.com/us/products/3208090>



Operating decal for the push-in Technology

# Potential collective terminal - PTU 16/14X2,5 GN

3214015

<https://www.phoenixcontact.com/us/products/3214015>

## End cap

End cap - NS 35/ 7,5 CAP - 1206560

<https://www.phoenixcontact.com/us/products/1206560>

DIN rail end piece, for DIN rail NS 35/7.5



## End cap

End cap - NS 35/15 CAP - 1206573

<https://www.phoenixcontact.com/us/products/1206573>

DIN rail end piece, for DIN rail NS 35/15



# Potential collective terminal - PTU 16/14X2,5 GN



3214015

<https://www.phoenixcontact.com/us/products/3214015>

## DIN rail, unperforated

DIN rail, unperforated - NS 35/ 7,5 UNPERF 2000MM - 0801681

<https://www.phoenixcontact.com/us/products/0801681>



DIN rail, unperforated, acc. to EN 60715, material: Steel, galvanized, passivated with a thick layer, Standard profile, color: silver, Pack of 25 (50 m)

---

## DIN rail, unperforated

DIN rail, unperforated - NS 35/ 7,5 WH UNPERF 2000MM-VPE 10 - 1204122

<https://www.phoenixcontact.com/us/products/1204122>



DIN rail, unperforated, acc. to EN 60715, material: Steel, Galvanized, white passivated, Standard profile, color: silver, Pack of 10 (20 m)



# Potential collective terminal - PTU 16/14X2,5 GN

3214015

<https://www.phoenixcontact.com/us/products/3214015>

## DIN rail, unperforated

DIN rail, unperforated - NS 35/ 7,5 AL UNPERF 2000MM - 0801704

<https://www.phoenixcontact.com/us/products/0801704>



DIN rail, unperforated, acc. to EN 60715, material: Aluminum, uncoated, Standard profile, color: silver, Pack of 25 (50 m)

---

## DIN rail, unperforated

DIN rail, unperforated - NS 35/ 7,5 ZN UNPERF 2000MM - 1206434

<https://www.phoenixcontact.com/us/products/1206434>



DIN rail, unperforated, acc. to EN 60715, material: Steel, galvanized, Standard profile, color: silver, Pack of 25 (50 m)

# Potential collective terminal - PTU 16/14X2,5 GN

3214015

<https://www.phoenixcontact.com/us/products/3214015>

## DIN rail, unperforated

DIN rail, unperforated - NS 35/ 7,5 CU UNPERF 2000MM-VPE 10 - 0801762

<https://www.phoenixcontact.com/us/products/0801762>



DIN rail, unperforated, acc. to EN 60715, material: Copper, uncoated, Standard profile, color: copper-colored, Pack of 10 (20 m)

---

## DIN rail, unperforated

DIN rail, unperforated - NS 35/15 UNPERF 2000MM - 1201714

<https://www.phoenixcontact.com/us/products/1201714>



DIN rail, unperforated, similar to EN 60715, material: Steel, galvanized, passivated with a thick layer, Standard profile, color: silver, Pack of 25 (50 m)

# Potential collective terminal - PTU 16/14X2,5 GN

3214015

<https://www.phoenixcontact.com/us/products/3214015>

## DIN rail, unperforated

DIN rail, unperforated - NS 35/15 WH UNPERF 2000MM-VPE 10 - 1204135

<https://www.phoenixcontact.com/us/products/1204135>



DIN rail, unperforated, similar to EN 60715, material: Steel, Galvanized, white passivated, Standard profile, color: silver, Pack of 10 (20 m)

---

## DIN rail, unperforated

DIN rail, unperforated - NS 35/15 AL UNPERF 2000MM - 1201756

<https://www.phoenixcontact.com/us/products/1201756>



DIN rail, unperforated, similar to EN 60715, material: Aluminum, uncoated, Standard profile, color: silver

# Potential collective terminal - PTU 16/14X2,5 GN

3214015

<https://www.phoenixcontact.com/us/products/3214015>

## DIN rail, unperforated

DIN rail, unperforated - NS 35/15 ZN UNPERF 2000MM - 1206586

<https://www.phoenixcontact.com/us/products/1206586>



DIN rail, unperforated, similar to EN 60715, material: Steel, galvanized, Standard profile, color: silver, Pack of 25 (50 m)

---

## DIN rail, unperforated

DIN rail, unperforated - NS 35/15 CU UNPERF 2000MM-VPE 10 - 1201895

<https://www.phoenixcontact.com/us/products/1201895>



DIN rail, unperforated, similar to EN 60715, material: Copper, uncoated, Standard profile, color: copper-colored, Pack of 10 (20 m)

# Potential collective terminal - PTU 16/14X2,5 GN

3214015

<https://www.phoenixcontact.com/us/products/3214015>

## DIN rail, unperforated

DIN rail, unperforated - NS 35/15-2,3 UNPERF 2000MM-VPE 10 - 1201798

<https://www.phoenixcontact.com/us/products/1201798>



DIN rail, unperforated, acc. to EN 60715, material: Steel, galvanized, passivated with a thick layer, Standard profile 2.3 mm, color: silver, Pack of 10 (20 m)

---

## DIN rail perforated

DIN rail perforated - NS 35/ 7,5 PERF 2000MM - 0801733

<https://www.phoenixcontact.com/us/products/0801733>



DIN rail perforated, acc. to EN 60715, material: Steel, galvanized, passivated with a thick layer, Standard profile, color: silver, Pack of 25 (50 m)

# Potential collective terminal - PTU 16/14X2,5 GN

3214015

<https://www.phoenixcontact.com/us/products/3214015>

## DIN rail perforated

DIN rail perforated - NS 35/ 7,5 WH PERF 2000MM - 1204119

<https://www.phoenixcontact.com/us/products/1204119>



DIN rail perforated, acc. to EN 60715, material: Steel, Galvanized, white passivated, Standard profile, color: silver, Pack of 25 (50 m)

---

## DIN rail perforated

DIN rail perforated - NS 35/ 7,5 ZN PERF 2000MM - 1206421

<https://www.phoenixcontact.com/us/products/1206421>



DIN rail perforated, acc. to EN 60715, material: Steel, galvanized, Standard profile, color: silver, Pack of 25 (50 m)

# Potential collective terminal - PTU 16/14X2,5 GN



3214015

<https://www.phoenixcontact.com/us/products/3214015>

## DIN rail perforated

DIN rail perforated - NS 35/15 PERF 2000MM - 1201730

<https://www.phoenixcontact.com/us/products/1201730>



DIN rail perforated, similar to EN 60715, material: Steel, galvanized, passivated with a thick layer, Standard profile, color: silver, Pack of 25 (50 m)

---

## DIN rail perforated

DIN rail perforated - NS 35/15 WH PERF 2000MM - 0806602

<https://www.phoenixcontact.com/us/products/0806602>



DIN rail perforated, similar to EN 60715, material: Steel, Galvanized, white passivated, Standard profile, color: white, Pack of 25 (50 m)

# Potential collective terminal - PTU 16/14X2,5 GN



3214015

<https://www.phoenixcontact.com/us/products/3214015>

## DIN rail perforated

DIN rail perforated - NS 35/15 ZN PERF 2000MM - 1206599

<https://www.phoenixcontact.com/us/products/1206599>



DIN rail perforated, similar to EN 60715, material: Steel, galvanized, Standard profile, color: silver, Pack of 25 (50 m)

---

## Marker carriers

Marker carriers - STP 5-3 - 0810562

<https://www.phoenixcontact.com/us/products/0810562>



Triple marker carriers, snaps onto the three-level spring-cage terminal block ST 2,5-3L, labeled with ZB 5 or ZBF

---

Phoenix Contact 2022 © - all rights reserved  
<https://www.phoenixcontact.com>

Phoenix Contact USA  
586 Fulling Mill Road  
Middletown, PA 17057, United States  
(+717) 944-1300  
[info@phoenixcon.com](mailto:info@phoenixcon.com)