

# Coaxial Amplifier

## ZHL-2-8

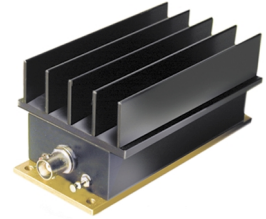
50Ω Medium High Power 10 to 1000 MHz

### Features

- wideband, 10 to 1000 MHz
- high IP3, +38 dBm typ.
- medium high power, 29 dBm min.

### Applications

- VHF/UHF
- test equipment
- cellular
- instrumentation
- laboratory



BNC version shown

CASE STYLE: T34

Connectors	Model	Price	Qty.
BNC	ZHL-2-8	\$525.00	(1-9)
SMA	ZHL-2-8-S	\$535.00	(1-9)

### Electrical Specifications

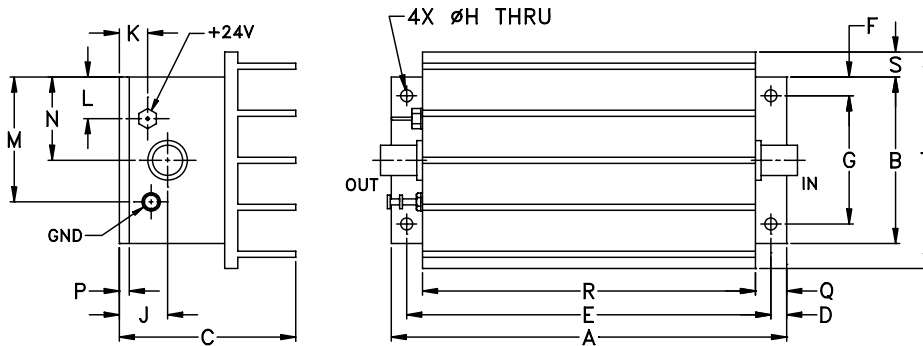
MODEL NO.	FREQ. (MHz)		GAIN (dB)		MAXIMUM POWER OUTPUT (dBm)		DYNAMIC RANGE		VSWR (-1) Max.		DC POWER	
	$f_L$	$f_U$	Min.	Flatness Max.	(1 dB Compr.) Min.	Input (no damage)	NF (dB) Typ.	IP3 (dBm) Typ.	In	Out	Volt (V) Nom.	Current (A) Max.
ZHL-2-8	10	1000	27	±1.0	+29	+5	10.0	+38	2.0	2.0	24	0.6

Open load is not recommended, potentially can cause damage.  
With no load derate max input power by 20 dB

### Maximum Ratings

Operating Temperature	-20°C to 65°C
Storage Temperature	-55°C to 100°C
DC Voltage	+25V Max.

### Outline Drawing



### Outline Dimensions (inch/mm)

A	B	C	D	E	F	G	H	J	K	L	M	N	P	Q	R	S	T	wt
4.75	2.00	2.12	.19	4.375	.23	1.540	.144	.58	.34	.50	1.50	1.00	.12	.38	4.00	.30	2.60	grams
120.65	50.80	53.85	4.83	111.13	5.84	39.12	3.66	14.73	8.64	12.70	38.10	25.40	3.05	9.65	101.60	7.62	66.04	440.0

**Mini-Circuits®**  
ISO 9001 ISO 14001 CERTIFIED

ALL NEW  
minicircuits.com

P.O. Box 350166, Brooklyn, New York 11235-0003 (718) 934-4500 Fax (718) 332-4661 For detailed performance specs & shopping online see Mini-Circuits web site



The Design Engineers Search Engine Provides ACTUAL Data Instantly From MINI-CIRCUITS At: [www.minicircuits.com](http://www.minicircuits.com)

RF/IF MICROWAVE COMPONENTS

REV. OR  
M98142  
ZHL-2-8  
071004  
Page 1 of 2

FREQUENCY (MHz)	GAIN (dB)			DIRECTIVITY (dB)			VSWR (:1)		NOISE FIGURE (dB)	POUT at 1 dB COMPR. (dBm)
	23V	24V	24.5V	23V	24V	24.5V	IN	OUT	24V	24V
10.00	28.91	28.90	28.90	32.50	32.50	33.90	1.52	1.77	6.17	30.73
22.60	29.36	29.36	29.36	35.40	32.20	31.70	1.31	1.61	5.73	31.05
66.80	29.45	29.44	29.44	34.90	28.00	34.70	1.26	1.58	5.26	31.27
197.60	29.47	29.46	29.47	31.20	35.30	33.00	1.26	1.63	5.22	31.10
390.80	29.34	29.33	29.34	36.40	30.90	32.60	1.27	1.44	5.27	30.40
492.30	29.38	29.37	29.37	30.50	34.80	32.50	1.28	1.21	5.32	30.02
619.20	29.39	29.38	29.38	28.50	28.70	30.80	1.25	1.02	5.38	29.65
746.20	28.95	28.94	28.94	27.60	27.60	27.90	1.28	1.05	5.51	29.56
873.10	29.05	29.03	29.03	26.30	24.60	25.90	1.50	1.18	5.74	29.69
1000.00	29.06	29.05	29.05	21.70	23.10	22.20	1.26	1.82	6.09	29.32

