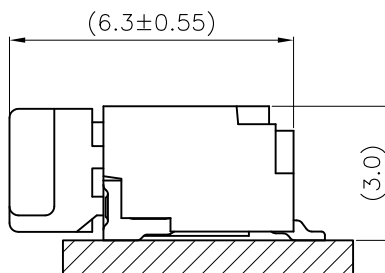
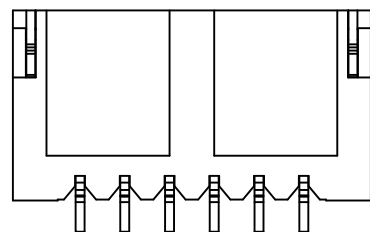
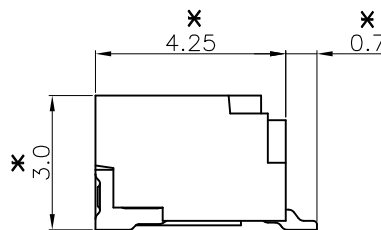
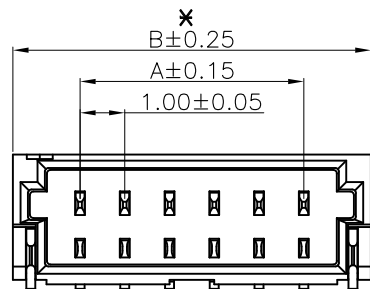
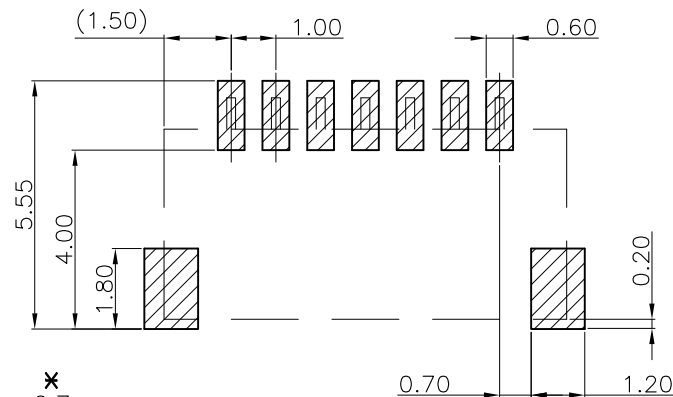


CIRCUIT 1 MARK



Mating Condition (REF.)



TOLERANCE:  $\pm 0.05$   
RECOMMENDED P.C.B. Layout  
TOP VIEW

| NO. OF WAYS | PART NO.     | Dim.(mm) |       |
|-------------|--------------|----------|-------|
|             |              | A        | B     |
| 2           | M40-4010246R | 1.00     | 4.00  |
| 3           | M40-4010346R | 2.00     | 5.00  |
| 4           | M40-4010446R | 3.00     | 6.00  |
| 5           | M40-4010546R | 4.00     | 7.00  |
| 6           | M40-4010646R | 5.00     | 8.00  |
| 7           | M40-4010746R | 6.00     | 9.00  |
| 8           | M40-4010846R | 7.00     | 10.00 |
| 9           | M40-4010946R | 8.00     | 11.00 |
| 10          | M40-4011046R | 9.00     | 12.00 |
| 11          | M40-4011146R | 10.00    | 13.00 |
| 12          | M40-4011246R | 11.00    | 14.00 |
| 13          | M40-4011346R | 12.00    | 15.00 |
| 14          | M40-4011446R | 13.00    | 16.00 |
| 15          | M40-4011546R | 14.00    | 17.00 |
| 16          | M40-4011646R | 15.00    | 18.00 |
| 17          | M40-4011746R | 16.00    | 19.00 |
| 18          | M40-4011846R | 17.00    | 20.00 |
| 19          | M40-4011946R | 18.00    | 21.00 |
| 20          | M40-4012046R | 19.00    | 22.00 |

## SPECIFICATIONS:

## MATERIAL:

INSULATION: LCP, UL94V-0 (HALOGEN FREE); COLOR: CREAM.

CONTACT: COPPER ALLOY, t=0.20mm.

## FINISH:

MATTE-TIN PLATED OVER NICKEL

## ELECTRICAL:

CURRENT RATING: 1A AC/DC

WORKING VOLTAGE: 50V AC/DC

WITHSTANDING VOLTAGE: 500V AC/MINUTE

CONTACT RESISTANCE: 30 mΩ MAX.

INSULATION RESISTANCE: 100 MΩ MIN.

## ENVIRONMENTAL:

TEMPERATURE RANGE: -25°C TO +85°C

|       |   |          |      |
|-------|---|----------|------|
| Leo   | 6 | 08.02.18 | A533 |
| Allan | 5 | 25.09.08 | A164 |
| Allan | 4 | 27.06.08 | A136 |
| Allan | 3 | 19.06.08 | A130 |
| Allan | 2 | 08.03.07 | A022 |
| Allan | 1 | 01.08.06 | --   |

| NAME | ISS. | DATE | C/NOTE |
|------|------|------|--------|
|------|------|------|--------|

APPROVED: B.Lim

CHECKED: D.P

DRAWN: Leo

CUSTOMER REF.:

ASSEMBLY DRG:

#NOTE: REMOVE R FOR LOOSE BAG PACKING

## ORDER CODE

M40-401 XX 46R

NO. OF WAYS \_\_\_\_\_ WITH R: REEL PACKING

WITHOUT R: LOOSE BAG PACKING  
(10 PCS PER STRIP, 10 STRIPS PER BAG)

NOTE: ALL DIMENSIONS AND NOTES MARKED \* ARE CRITICAL AND MUST BE CHECKED IN ACCORDANCE WITH QUALITY DOC. QI-02A

# HARWIN

HARWIN USA  
TEL: 603 893 5376  
FAX: 603 893 5396  
mis@harwin.com

HARWIN Europe (UK)  
TEL: 023 9231 4545  
FAX: 023 9231 4590  
mis@harwin.co.uk

HARWIN Asia  
TEL: +65 6 779 4909  
FAX: +65 6 779 3868  
mis@harwin.com.sg

THIS DRAWING AND ANY INFORMATION OR DESCRIPTIVE MATTER SET OUT HEREON ARE CONFIDENTIAL AND COPYRIGHT PROPERTY OF THE HARWIN GROUP AND MUST NOT BE DISCLOSED, LOANED, COPIED OR USED FOR MANUFACTURING, TENDERING OR FOR ANY OTHER PURPOSE WITHOUT THEIR WRITTEN PERMISSION.

TOLERANCES  
X. =  $\pm 1$ mm  
X.X =  $\pm 0.25$ mm  
X.XX =  $\pm 0.15$ mm  
X.XXX =  $\pm 0.08$ mm  
ANGLES =  $\pm 5^\circ$   
UNLESS STATED

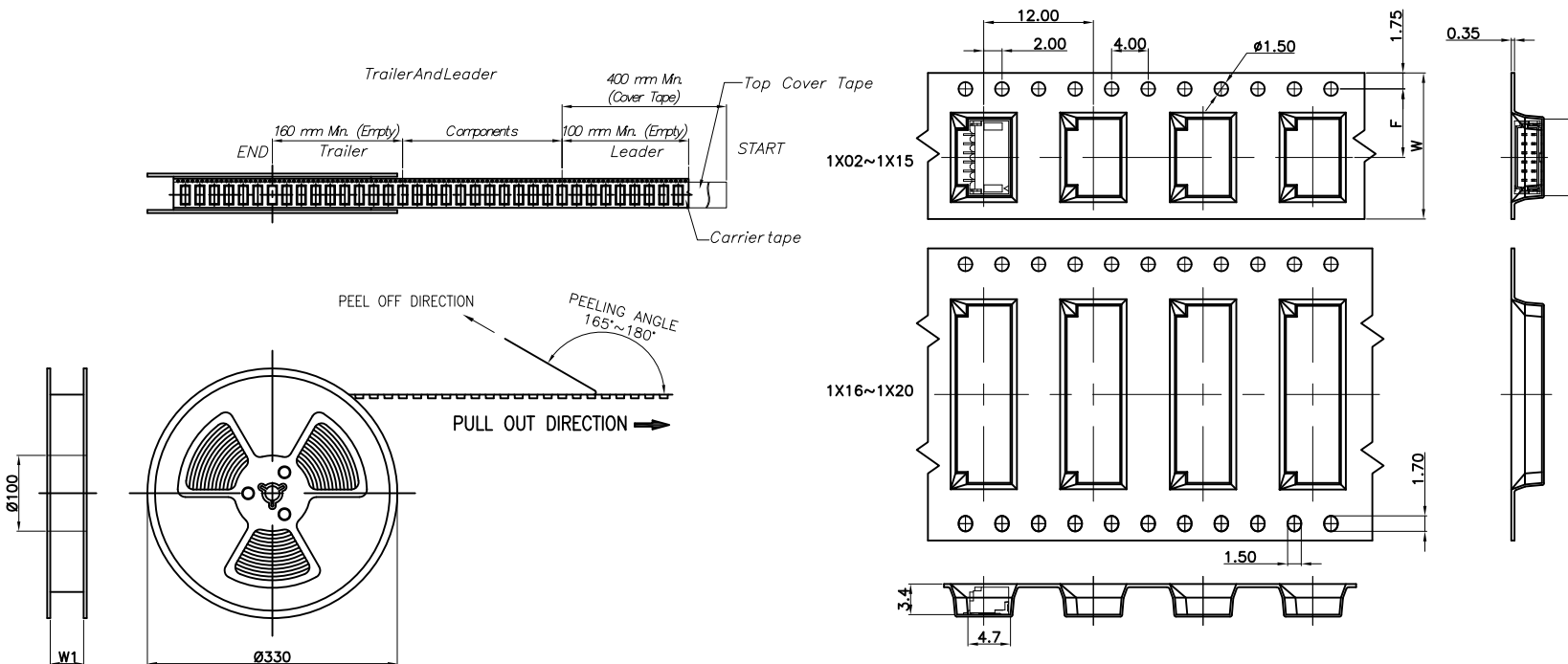
MATERIAL: SEE NOTES  
FINISH: SEE NOTES  
S/AREA: mm<sup>2</sup>

TITLE:  
WAFER 1.00mm SIDE ENTRY SMT TYPE

DRAWING NUMBER:  
M40-401 XX 46 X

SHT  
1  
OF  
2

| Pin  | Dim.(mm) |       |       |       |
|------|----------|-------|-------|-------|
|      | BO       | F     | W     | W1    |
| 1x02 | 4.40     | 7.50  | 16.00 | 17.50 |
| 1x03 | 5.40     |       |       |       |
| 1x04 | 6.40     |       |       |       |
| 1x05 | 7.40     |       |       |       |
| 1x06 | 8.40     |       |       |       |
| 1x07 | 9.40     |       |       |       |
| 1x08 | 10.40    |       |       |       |
| 1x09 | 11.40    | 11.50 | 24.00 | 25.50 |
| 1x10 | 12.40    |       |       |       |
| 1x11 | 13.40    |       |       |       |
| 1x12 | 14.40    |       |       |       |
| 1x13 | 15.40    |       |       |       |
| 1x14 | 16.40    |       |       |       |
| 1x15 | 17.40    |       |       |       |
| 1x16 | 18.40    | 14.20 | 32.00 | 33.50 |
| 1x17 | 19.40    |       |       |       |
| 1x18 | 20.40    |       |       |       |
| 1x19 | 21.40    |       |       |       |
| 1x20 | 22.40    |       |       |       |
|      | 20.20    | 44.00 | 45.50 |       |



- 10 SPROCKET HOLE PITCH CUMULATIVE TOLERANCE  $\pm 0.20$
- CARRIER CAMBER IS WITHIN 1 mm IN 250 mm
- THE TOTAL TEARING CONTROL RANGE OF TOP COVER TAPE IS 10~130g, REFERENCE SPEC: EIA-481-D
- PEELING SPEED: 300mm/MINUTES, REFERENCE SPEC: EIA-481-D
- MATERIAL: TRANSPARENT CONDUCTIVE POLYSTYRENE ALLOY.(UP-5000)
- ALL DIMENSIONS MEET EIA-481-D REQUIREMENTS
- THICKNESS:  $0.35 \pm 0.05$ mm
- COMPONENT LOAD PER 13" REEL: 1500 PCS

NOTE: ALL DIMENSIONS AND NOTES MARKED \* ARE CRITICAL AND MUST BE CHECKED IN ACCORDANCE WITH QUALITY DOC. QI-02A

|       |   |          |      |
|-------|---|----------|------|
| Leo   | 6 | 08.02.18 | A533 |
| Allan | 5 | 25.09.08 | A164 |
| Allan | 4 | 27.06.08 | A136 |
| Allan | 3 | 19.06.08 | A130 |
| Allan | 2 | 08.03.07 | A022 |
| Allan | 1 | 01.08.06 | --   |

| NAME | ISS. | DATE | C/NOTE |
|------|------|------|--------|
|------|------|------|--------|

APPROVED: B.Lim

CHECKED: D.P

DRAWN: Leo

CUSTOMER REF.:

ASSEMBLY DRG:

# HARWIN

HARWIN USA  
TEL: 603 893 5376  
FAX: 603 893 5396  
mis@harwin.com

HARWIN Europe (UK)  
TEL: 023 9231 4545  
FAX: 023 9231 4590  
mis@harwin.co.uk

HARWIN Asia  
TEL: +65 6 779 4909  
FAX: +65 6 779 3868  
mis@harwin.com.sg

THIS DRAWING AND ANY INFORMATION OR DESCRIPTIVE MATTER SET OUT HEREON ARE CONFIDENTIAL AND COPYRIGHT PROPERTY OF THE HARWIN GROUP AND MUST NOT BE DISCLOSED, LOANED, COPIED OR USED FOR MANUFACTURING, TENDERING OR FOR ANY OTHER PURPOSE WITHOUT THEIR WRITTEN PERMISSION.

TOLERANCES  
X. =  $\pm 1$ mm  
X.X =  $\pm 0.25$ mm  
X.XX =  $\pm 0.15$ mm  
X.XXX =  $\pm 0.08$ mm  
ANGLES =  $\pm 5^\circ$   
UNLESS STATED

MATERIAL:  
SEE NOTES  
FINISH:  
SEE NOTES  
S/AREA: mm<sup>2</sup>

TITLE:  
WAFER 1.00mm SIDE ENTRY SMT TYPE

DRAWING NUMBER:  
M40-401 XX 46 X

SHT  
2  
OF  
2