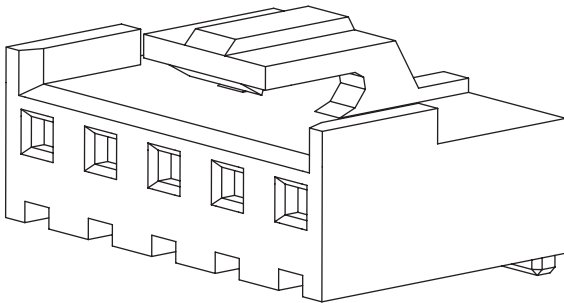


3.96mm (0.156") PITCH CONNECTOR

Wire-to-Board
Housing

39606HS Series

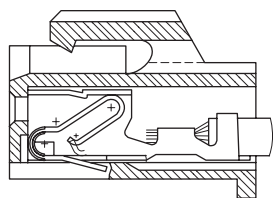
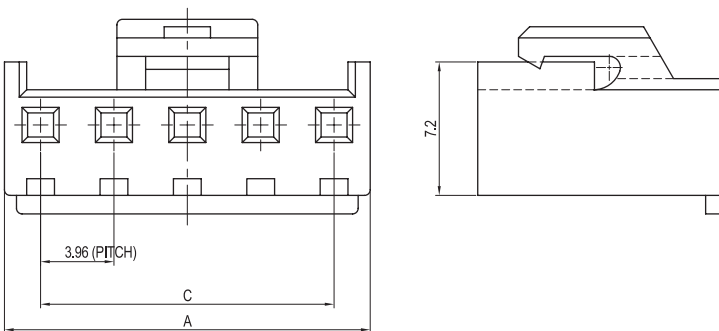
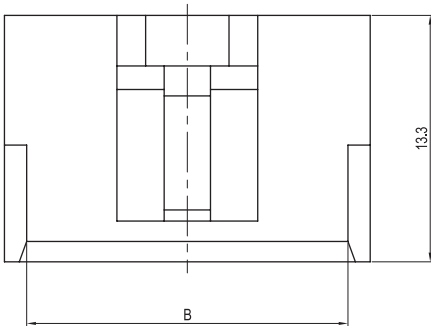


Material

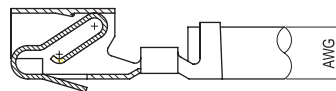
I/NO	DESCRIPTION	TITLE	MATERIAL
1	HOUSING	39606HS	PA66, UL94 V Grade

Available Pin

PARTS NO.	DIM. A	DIM. B	DIM. C
39606HS-02000	8.26	5.46	3.96
39606HS-03000	12.22	9.42	7.92
39606HS-04000	16.18	13.38	11.88
39606HS-05000	20.14	17.34	15.84
39606HS-06000	24.10	21.30	19.80
39606HS-07000	28.06	25.26	23.76
39606HS-08000	32.02	29.22	27.72
39606HS-09000	35.98	33.18	31.68
39606HS-10000	39.94	37.14	35.64
39606HS-11000	43.90	41.10	39.60
39606HS-12000	47.86	45.06	43.56
39606HS-13000	51.82	49.02	47.52
39606HS-14000	55.78	52.98	51.48
39606HS-15000	59.74	56.94	55.44



TERMINAL ASSEMBLY DRAWING



AWG : #20 ~ #24

Specification

ITEM	SPEC
Voltage Rating	AC/DC 250V
Current Rating	AC/DC 7.5A
Operating Temperature	-25°C~+85°C
Contact Resistance	30mΩ MAX
Withstanding Voltage	AC1500V/1min
Insulation Resistance	1000MΩ MIN
Applicable Wire	AWG #20~#24
Applicable P.C.B	-
Applicable FPC/FFC	-
Solder Height	-
Crimp Tensile Strength	-
UL FILE NO	-

Application Terminal : YT396J (186 page)