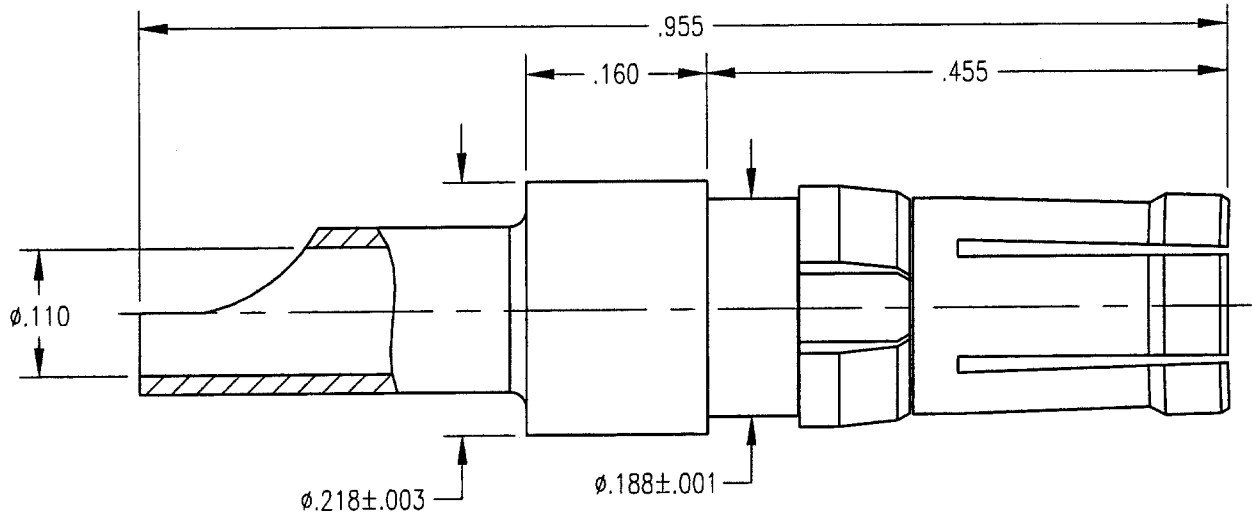


DWC NO.		221-510-0013G	
REV	DESCRIPTION	BY DATE	APP'D
C	ECN 2369	JM 8/2/00	JM



NOTES:

- MATERIALS:  
 BODY: BERYLLIUM COPPER PER ASTM B196  
 CLIP RING: BERYLLIUM COPPER PER ASTM B194
- FINISH:  
 BODY: .000030 MIN. GOLD PER MIL-G-45204 OVER  
 .000050 MIN. NICKEL PER QQ-N-290  
 CLIP RING: .000100 MIN. NICKEL PER QQ-N-290 OVER  
 COPPER FLASH
- ELECTRICAL:  
 CURRENT RATING: 10 AMPS
- RETENTION IN HOUSING: 12 LBS. MIN.

PER ASME Y14.5M-1994 UNLESS OTHERWISE SPECIFIED: DIMENSIONS ARE IN INCHES (MM)				<b>Litton</b> <b>Winchester/Retconn</b> 400 Park Road Waterbury, Connecticut 06705	
TOLERANCES: DECIMALS xx ± .01/0.254 xxx ± .005/0.127 ANGLES ± 2° SCALE: 6:1				TITLE <b>RDM HIGH POWER RECEPTACLE</b>	
<b>CUSTOMER DRAWING</b>				<b>A</b> 221-510-0013G SH. OF REV. 1 1 C	
DRAWN JED	DATE 6/16/98	CHECKED JM	DATE 6/16/98	APPROVED PRP	DATE 6/16/98