


RP1298

**423.22 MHz
SAW Resonator**



TO39-3 Case

- **Ideal for 433.92 MHz Superhet Receiver LOs**
- **Nominal Insertion Phase Shift of 180° at Resonance**
- **Quartz Stability**
- **Rugged, Hermetic, Low-Profile TO39 Case**
- **Complies with Directive 2002/95/EC (RoHS)** 

The RP1298 is a two-port, 180° surface-acoustic-wave (SAW) resonator in a low-profile TO39 case. It provides reliable, fundamental-mode, quartz frequency stabilization of local oscillators operating at approximately 423.22 MHz. The RP1298 is designed for 433.92 MHz superhet receivers in remote-control and wireless security applications operating in Europe under ETSI I-ETS 300 220 and in Germany under FTZ 17 TR 2100.

Absolute Maximum Ratings

Rating	Value	Units
CW RF Power Dissipation (See: Typical Test Circuit)	+0	dBm
DC Voltage Between Any Two Pins (Observe ESD Precautions)	±30	VDC
Case Temperature	-40 to +85	°C

Characteristic		Sym	Notes	Minimum	Typical	Maximum	Units		
Center Frequency	Absolute Frequency	f_C	2, 3, 4, 5,	423.120		423.320	MHz		
	Tolerance from 423.220 MHz	Δf_C							±100
Insertion Loss		IL	2, 5, 6		5.2	8.0	dB		
Quality Factor	Unloaded Q	Q_U	5, 6, 7		15,200				
	50 Ω Loaded Q	Q_L						6,900	
Temperature Stability	Turnover Temperature	T_O	6, 7, 8	24	39	54	°C		
	Turnover Frequency	f_O						$f_C+2.6$	kHz
	Frequency Temp. Coefficient	FTC						0.037	ppm/°C ²
Frequency Aging	Absolute Value during First Year	$ f_A $	6		≤ 10		ppm/yr		
DC Insulation Resistance between Any Two Pins			5	1.0			M Ω		
RF Equivalent RLC	Motional Resistance	R_M	5, 7, 9		82	152	Ω		
	Motional Inductance	L_M						475.283	μ H
	Motional Capacitance	C_M						0.297547	fF
	Shunt Static Capacitance	C_O						2.2	2.5
Lid Symbolization (in addition to Lot and/or Date Codes)				RFM P1298					



CAUTION: Electrostatic Sensitive Device. Observe precautions for handling.

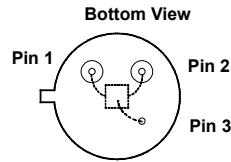
NOTES:

1. Frequency aging is the change in f_C with time and is specified at +65°C or less. Aging may exceed the specification for prolonged temperatures above +65°C. Typically, aging is greatest the first year after manufacture, decreasing significantly in subsequent years.
2. The frequency f_C is the frequency of minimum IL with the resonator in the specified test fixture in a 50 Ω test system with VSWR ≤ 1.2:1. Typically, $f_{OSCILLATOR}$ or $f_{TRANSMITTER}$ is less than the resonator f_C .
3. One or more of the following United States patents apply: 4,454,488; 4,616,197.
4. Typically, equipment utilizing this device requires emissions testing and government approval, which is the responsibility of the equipment manufacturer.
5. Unless noted otherwise, case temperature $T_C = +25^\circ\text{C} \pm 5^\circ\text{C}$
6. The design, manufacturing process, and specifications of this device are subject to change without notice.
7. Derived mathematically from one or more of the following directly measured parameters: f_C , IL, 3 dB bandwidth, f_C versus T_C , and C_O .
8. Turnover temperature, T_O , is the temperature of maximum (or turnover) frequency, f_O . The nominal frequency at any case temperature, T_C , may be calculated from: $f = f_O [1 - FTC (T_O - T_C)^2]$. Typically, *oscillator* T_O is 20° less than the specified *resonator* T_O .
9. This equivalent RLC model approximates resonator performance near the resonant frequency and is provided for reference only. The capacitance C_O is the measured static (nonmotional) capacitance between either pin 1 and ground or pin 2 and ground. The measurement includes case parasitic capacitance.

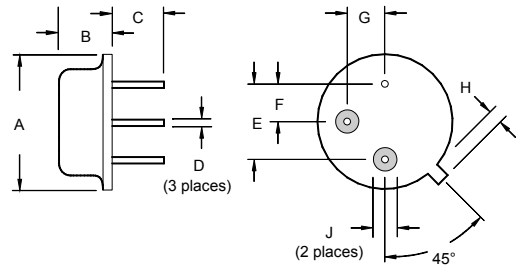
Electrical Connections

This two-port, three-terminal SAW resonator is bidirectional. However, impedances and circuit board parasitics may not be symmetrical, requiring slightly different oscillator component-matching values.

Pin	Connection
1	Input or Output
2	Output or Input
3	Case Ground

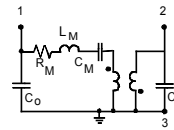


Case Design

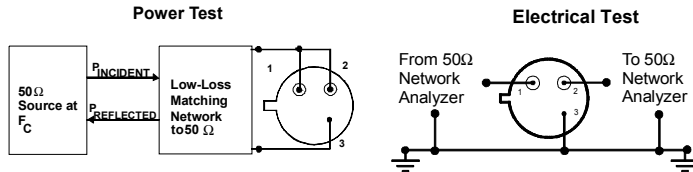


Equivalent LC Model

The following equivalent LC model is valid near resonance:



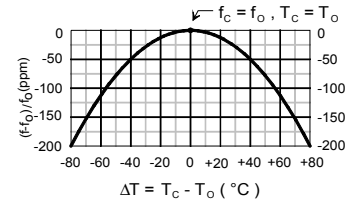
Typical Test Circuit



$$CW \text{ RF Power Dissipation} = P_{INCIDENT} - P_{REFLECTED}$$

Temperature Characteristics

The curve shown on the right accounts for resonator contribution only and does not include LC component temperature contributions.

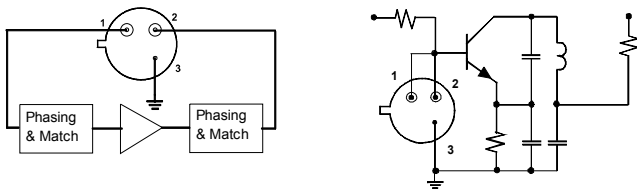


Typical Application Circuits

This SAW resonator can be used in oscillator or transmitter designs that require 180° phase shift at resonance in a two-port configuration. One-port resonators can be simulated, as shown, by connecting pins 1 and 2 together. However, for most low-cost consumer products, this is only recommended for retrofit applications and not for new designs.

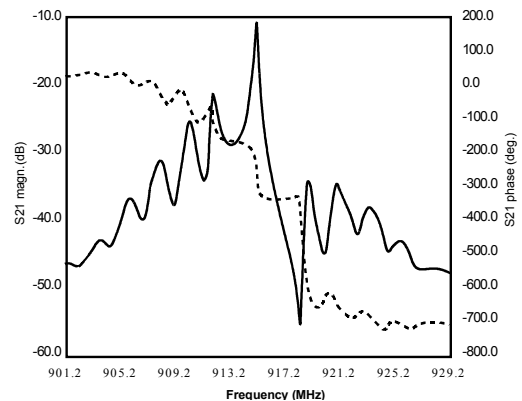
Conventional Two-Port Design:

Simulated One-Port Design:



Typical Frequency Response

The plot shown below is a typical frequency response for the RP series of two-port resonators. The plot is for RP1094.



Dimensions	Millimeters		Inches	
	Min	Max	Min	Max