



### Model Number

CJ30-50K10-E0123-Y46139

## Technical Data

### General specifications

Switching function	Normally open/closed (NO/NC) switchable
Output type	PNP/NPN
Rated operating distance	$s_n$ 30 mm
Installation	flush
Output polarity	DC
Assured operating distance	$s_a$ 0 ... 25 mm
Output type	3-wire

### Nominal ratings

Installation conditions	
B	0 mm
C	90 mm
F	100 mm
Operating voltage	$U_B$ 10 ... 30 V
Switching frequency	$f$ 0 ... 50 Hz
Hysteresis	H typ. 20 %
Reverse polarity protection	reverse polarity protected
Short-circuit protection	pulsing
Voltage drop	$U_d$ $\leq 2.5$ V
Operating current	$I_L$ 0 ... 150 mA
Lowest operating current	$I_m$ 0 mA
Off-state current	$I_r$ 0 ... 0.1 mA typ. 0.1 $\mu$ A at 25 °C
No-load supply current	$I_0$ $\leq 15$ mA
Time delay before availability	$t_v$ $\leq 50$ ms
Switching state indicator	Multihole-LED, yellow

### Functional safety related parameters

MTTF <sub>d</sub>	554 a
Mission Time (T <sub>M</sub> )	20 a
Diagnostic Coverage (DC)	0 %

### Ambient conditions

Ambient temperature	-30 ... 60 °C (-22 ... 140 °F)
---------------------	--------------------------------

### Mechanical specifications

Connection type	cable PUR , 2 m
Core cross-section	0.25 mm <sup>2</sup>
Housing material	POM
Sensing face	POM
Degree of protection	IP67

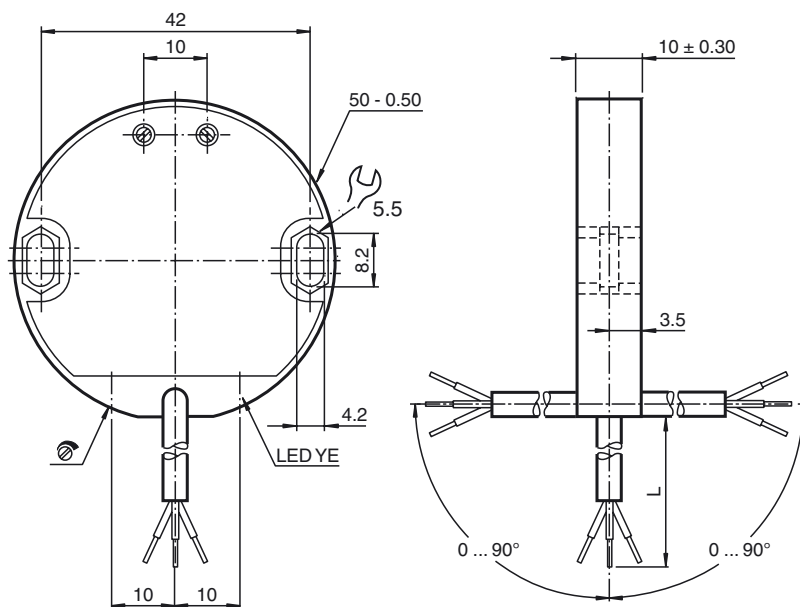
### Compliance with standards and directives

Standard conformity	
Standards	EN 60947-5-2:2007 EN 60947-5-2/A1:2012 IEC 60947-5-2:2007 IEC 60947-5-2 AMD 1:2012

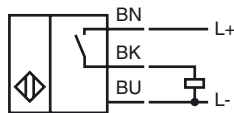
### Approvals and certificates

UL approval	cULus Listed, General Purpose
CSA approval	cCSAus Listed, General Purpose

## Dimensions



## Electrical Connection



The switching state is indicated by LED visible in three directions with the output function break contact / make contact / PNP / NPN freely configurable via rotary switch.

### Adjustment:

The adjustment is via the flush mounted adjustment potentiometer.

### Change-over:

For the functional coding PNP/NPN and break/make contact there is a rotary switch each at the back of the sensor.

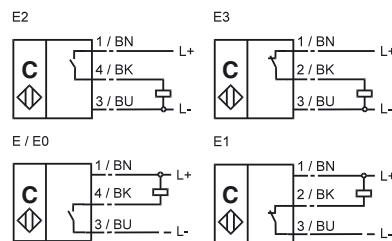
The adjustment is carried out by turning the appropriate switch to the position corresponding to the switching function (ground stop).

**Delivery state: E2 (PNP, make contact)**

### Break/make contact coding:

By turning 270 degree to the left the change-over from PNP to NPN is achieved.

### Connection diagrams:



## Installation Conditions

