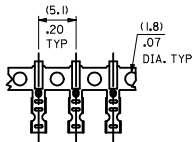
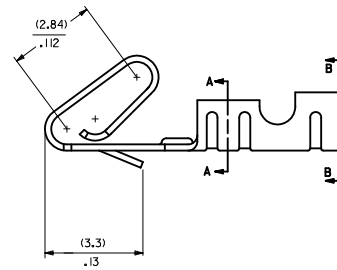
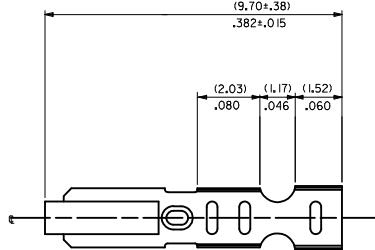
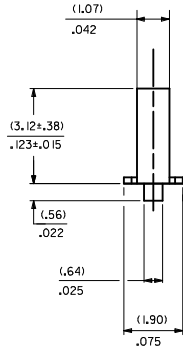
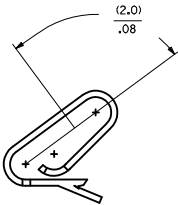


CARRIER VIEW

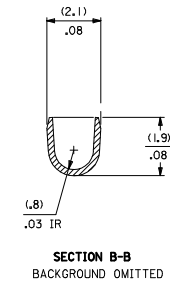
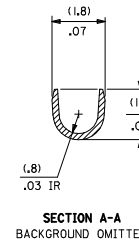


SELECT GOLD LOCATION

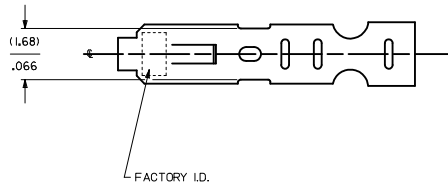
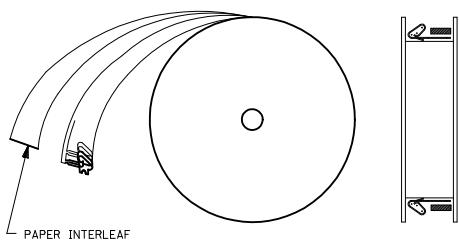


NOTES:

- MATERIAL:
(0.20)/.008 THICK PHOS BRONZE
- FINISH:
222 - OVERALL MATTE TIN: (0.00254)/.000100 MIN. TIN OVER (0.00127)/.000050 MIN NICKEL
P909 - OVERALL HOT TIN DIP: (0.00254)/.000100 MIN.
231 - SELECT GOLD: (0.00127)/.000050 MIN.
SELECT MATTE TIN: (0.00254)/.000100 MIN.
OVERALL NICKEL UNDERPLATE: (0.00127)/.000050 MIN.
550 - SELECT GOLD: (0.00038)/.000015 MIN.
OVERALL GOLD FLASH: (0.00005)/.000002 MIN.
OVERALL NICKEL UNDERPLATE: (0.00076)/.000030 MIN.
555- SELECT GOLD (0.00038)/.000015 MIN.
OVERALL NICKEL UNDERPLATE: (0.00076)/.000030
558 - SELECT GOLD: (0.00076)/.000030 MIN.
OVERALL GOLD FLASH: (0.00005)/.000002 MIN.
OVERALL NICKEL UNDERPLATE: (0.00127)/.000050 MIN.
561- SELECT GOLD (0.00076)/.000030 MIN.
OVERALL NICKEL UNDERPLATE: (0.00127)/.000050
- PRODUCT SPEC: PS-10-07
- PACKAGING SPECIFICATION: LOOSE TERMINALS: PER PK-2759-001
CHAIN FORM TERMINALS: NONE
- CRIMP IS FOR 22-30 GA WIRE WITH (1.57)/.062 DIA INSULATION MAX.
- INSERTION FORCE OF TERMINAL INTO (2.54)/.100 CENTERLINE CONNECTOR IS 2.5 LBS. MAX
- TERMINAL RETENTION IN HOUSING IS 26.7N / 6LBS MIN. WHEN PULLED AT THE RATE OF (25.4MM)/ 1 INCH PER MINUTE.
- DIMENSIONS GIVEN ACROSS CENTERLINES ARE SYMMETRICAL ABOUT THOSE CENTERLINES WITHIN HALF THE TOTAL TOLERANCE.
- THIS PART CONFORMS TO CLASS B REQUIREMENTS OF COSMETIC SPECIFICATION PS-45499-002



WINDING DETAIL A



6459-(***)*
FORM
L=LOOSE
A=CHAIN PER DETAIL A
PLATING
SEE NOTE 2

REMOVED 208 PLT EC NO: UCF2012-2810 DRAWN: JAGUILAR 2012/02/27 CHECKED: KIPPER 2012/02/27 APPR: FSMITH 2012/03/20	QUALITY SYMBOLS	GENERAL TOLERANCES (UNLESS SPECIFIED)	DIMENSION STYLE	SCALE	DESIGN UNITS	THIRD ANGLE PROJECTION
	▽=0	mm INCH	MM/IN	DATE	INCH	☉
	▽=0	4 PLACES ± --- ± ---	DATE	01/21/92	TITLE	KK (2.54)/.100 CRIMP
	▽=0	3 PLACES ± --- ± .005	DATE	01/21/92	TITLE	TERMINAL, 22-30 GA WIRE
	2 PLACES ± 0.13 ± .010	APPROVED BY	DATE	01/21/92	DATE	SAME AS 2759 EXCEPT MATL
	1 PLACE ± 0.25 ± ---	DATE	2012/03/20	DATE	DATE	MOLEX INCORPORATED
	ANGULAR ±1/2°	MATERIAL NO.	SEE CHART	DOCUMENT NO.	SD-6459	SHEET NO. 1 OF 2
	DRAFT WHERE APPLICABLE MUST REMAIN WITHIN DIMENSIONS	SIZE	D	THIS DRAWING CONTAINS INFORMATION THAT IS PROPRIETARY TO MOLEX INCORPORATED AND SHOULD NOT BE USED WITHOUT WRITTEN PERMISSION		

6459-(***)*

PART NO.

ENG. NO.

08-52-0101

6459-(P909)

08-52-0123

6459-(P909)L

08-65-0801

6459-(561)

6459-(561)L

08-52-0118

6459-(222)

6459-(222)L

08-65-0811

6459-(558)

08-65-0812

6459-(558)L

08-65-0815

6459-(555)

08-65-0816

6459-(555)L

08-65-0813

6459-(550)

08-65-0814

6459-(550)L

08-65-0817

6459-(231)

08-65-0818

6459-(231)L

REMOVE 6459-1208 EC NO: UCP2012-2810 G DRAWN: JAGUILAR 2012/02/27 CHK: MATT KIPPER 2012/02/27 APPR: FSMITH 2012/03/20 REV DESCRIPTION	QUALITY SYMBOLS	GENERAL TOLERANCES (UNLESS SPECIFIED)	DIMENSION STYLE	SCALE	DESIGN UNITS	THIRD ANGLE PROJECTION	
	▽=0	mm INCH	MM/IN	1:1	INCH		
	▽=0	4 PLACES ±.005 ±.005	DRAWN BY DATE	SAMIEC 01/21/92	TITLE		KK (2.54)/.100 CRIMP
	▽=0	3 PLACES ±.013 ±.010	CHECKED BY DATE	PATEL 01/21/92	TERMINAL, 22-30 GA WIRE		SAME AS 2759 EXCEPT MATL MOLEX INCORPORATED
	1 PLACE ±0.25 ±.005	APPROVED BY DATE	FSMITH 2012/03/20	MATERIAL NO.	DOCUMENT NO.	SHEET NO.	
		ANGULAR ±1/2°	SEE CHART		SD-6459	2 OF 2	
		DRAFT WHERE APPLICABLE MUST REMAIN WITHIN DIMENSIONS	THIS DRAWING CONTAINS INFORMATION THAT IS PROPRIETARY TO MOLEX INCORPORATED AND SHOULD NOT BE USED WITHOUT WRITTEN PERMISSION				