

NEW



Micro SIM Card Connector

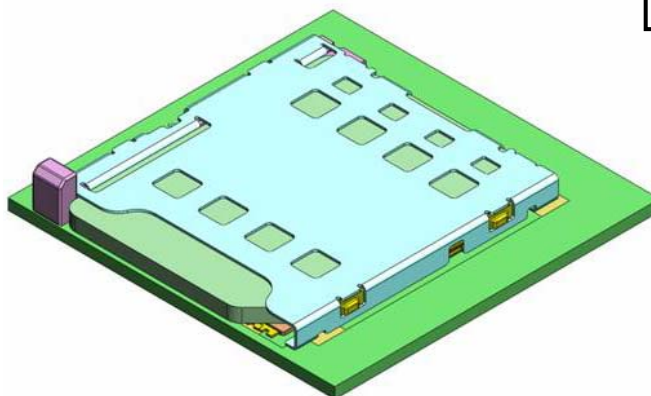
CONNECTOR

MB-0237-1

October 2011

SF50 Series

RoHS Compliant



For mobile phones there is a gradual shift from the conventional plug-in-SIM cards to the smaller micro SIM cards.

The “SF50 Series” is a pull-lever type connector which is compatible with the micro SIM card.

* SIM: Subscriber Identity Module

Features

- 1.2mm height, 13.6mm width, and 15.6mm depth; achieves space saving and industry’s lowest-in-class profile.
- Simple structure and easy operation with pull-lever.
- Resin used for pull-lever material ensures robust structure and is also compatible with reflow mounting.
- Location of pull-lever is available in left and right side variations.
- Balanced 6 hold-down points for good EMI performance.
- Pb-free, halogen-free compliant product.
- Supports automated mounting with embossed tape.

Applications

Smartphone, mobile phone, tablet devices, and others

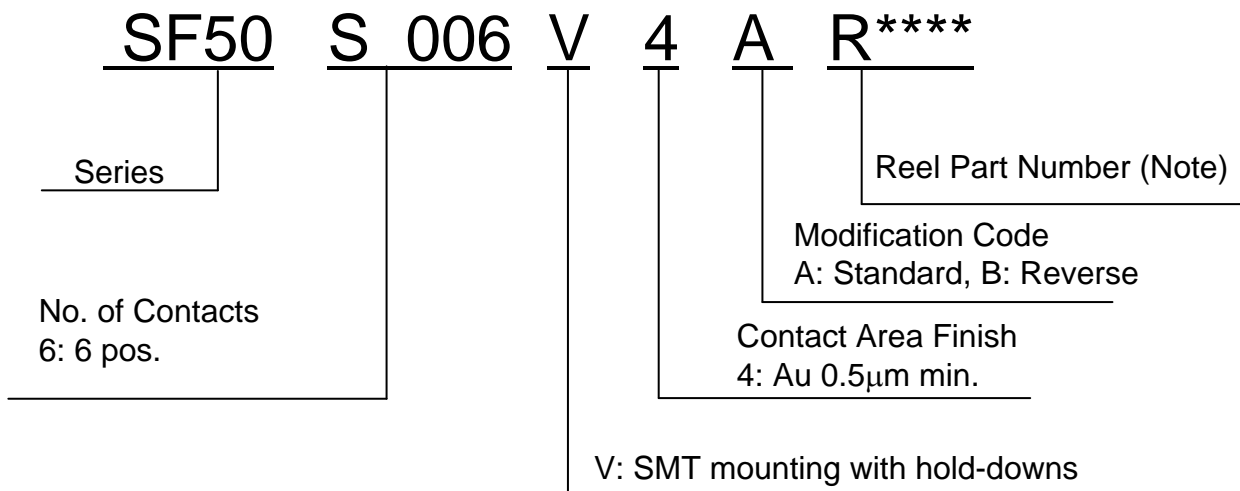
General Specifications

- | | |
|---|--------------------------------|
| ■ No. of Contacts: 6 positions
(compatible with 8 positions) | ■ Rated Current: 0.5A/ per pin |
| ■ Contact Resistance: 100mΩ max. | ■ Rated Voltage: 10V/ per pin |
| ■ Dielectric Withstanding Voltage:
AC500Vr.m.s. per minute | ■ Durability: 5,000 times |
| ■ Operating Temperature:
-25 Deg. C to +85 Deg. C | |

Materials and Finishes

Component	Material / Finish
Contact	Copper alloy / Au plating over Ni (contact area)
Housing	Synthetic resin
Cover Frame	Stainless steel / Terminal area: Au flash plating over Ni
Pull Bar	Synthetic resin / Black

Ordering Information



Note) An embossed tape reel contains 1,500 pcs.

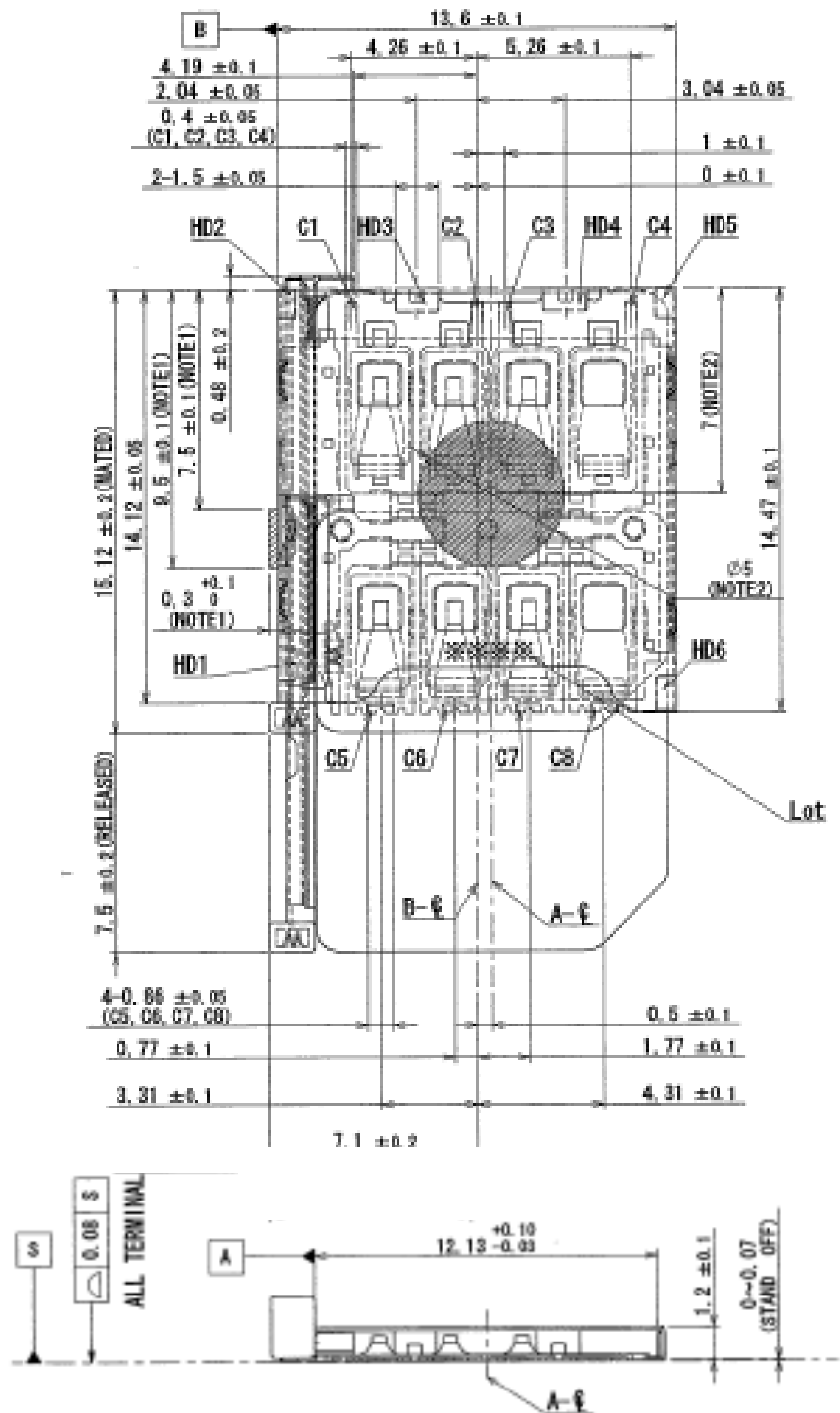
Please contact us for details on embossed tape specifications.

Product Variations

Part Number	SJ Drawing	Remarks
SF50S006V4A	SJ111457	Pull-lever left side (STD type)
SF50S006V4B	SJ111460	A type reverse
SF50S006V4C	SJ111463	Pull-lever right side (STD type)
In Common	JACS-10787 JAHL-10787	Specification Handling Instruction

Product Drawing

■ SF50S006V4A

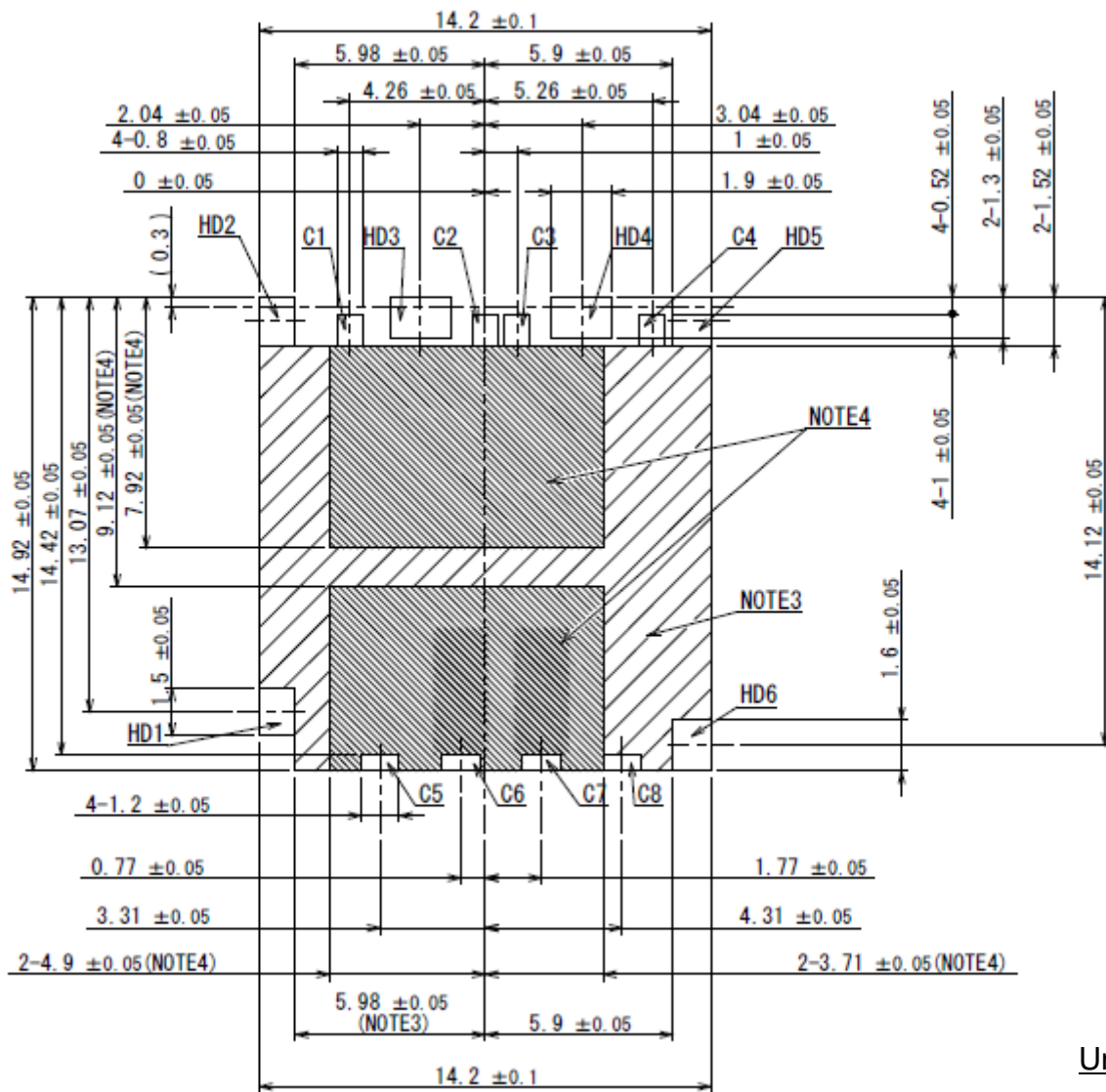


Unit: mm

Note 1. Do not apply force to this surface.

Note 2. Vacuum area.

*Please refer to SJ Drawing when considering this product.



Unit: mm

Applicable Board Dimensions (for reference)

Note 3. Bottom area is metal (ground) so only ground pattern and ground via hole are allowed in this area.

Note 4. Pattern and via hole cannot be applied to this area due to moving parts.

Notice: Products shown in this brochure are made for the applications listed below. However, if the above-mentioned products are to be used in aerospace devices, marine cable-connection devices, atomic power control systems, medical equipment for life-support systems, or any other specific application requiring extremely high reliability, please contact JAE for further information. Recommended applications: computers, office machines, measuring devices, telecommunication devices (terminals, mobile devices), AV devices, household applications, FA devices, etc.

Japan Aviation Electronics Industry, Limited

Product Marketing Division
 Aobadai Building, 3-1-19, Aobadai, Meguro-ku, Tokyo 153-8539
 Phone: +81-3-3780-2763 FAX: +81-3-3780-2946

* The specifications in this brochure are subject to change without notice. Please contact JAE for information.