

## Han L32 B-HSM2-SL-M40

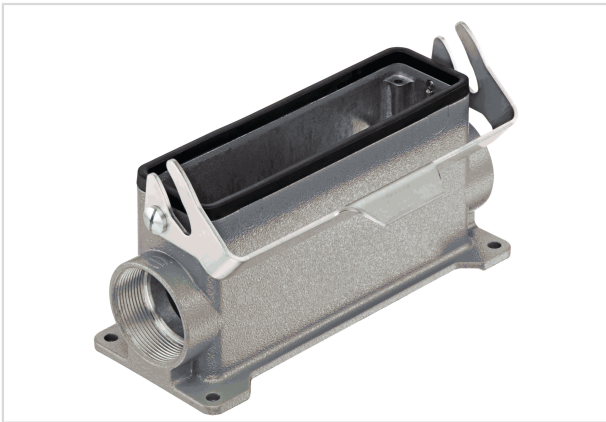


Image is for illustration purposes only. Please refer to product description.

Part number	19 30 132 0276 ML
Specification	Han L32 B-HSM2-SL-M40
HARTING eCatalogue	<a href="https://b2b.harting.com/19301320276ML">https://b2b.harting.com/19301320276ML</a>

### Identification

Category	Hoods/Housings
Series of hoods/housings	Han <sup>®</sup> B
Type of hood/housing	Surface mounted housing

### Version

Size	L32 B
Version	Side entry
Cable entry	2x M40
Locking type	Single locking lever
Field of application	Standard hoods/housings for industrial connectors

### Technical characteristics

Limiting temperature	-40 ... +125 °C
Degree of protection acc. to IEC 60529	IP65
Type rating acc. to UL 50 / UL 50E	4 4X 12

### Material properties

Material (hood/housing)	Aluminium die-cast
Surface (hood/housing)	Powder-coated
Colour (hood/housing)	RAL 7037 (dust grey)
Material (seal)	NBR
Material (locking)	Steel, zinc plated



Pushing Performance

## Material properties

RoHS	compliant with exemption
RoHS exemptions	6(a) / 6(a)-I: Lead as an alloying element in steel for machining purposes and in galvanised steel containing up to 0,35 % lead by weight / Lead as an alloying element in steel for machining purposes containing up to 0,35 % lead by weight and in batch hot dip galvanised steel components containing up to 0,2 % lead by weight
ELV status	compliant with exemption
China RoHS	50
REACH Annex XVII substances	No
REACH ANNEX XIV substances	No
REACH SVHC substances	Yes
REACH SVHC substances	Lead
California Proposition 65 substances	Yes
California Proposition 65 substances	Lead

## Specifications and approvals

Approvals	DNV GL
CE	Yes

## Commercial data

Packaging size	1
Net weight	518 g
Country of origin	China
European customs tariff number	85389099
eCl@ss	27440202 Shell for industrial connectors