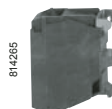


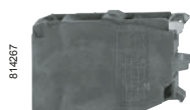
To combine with heads, see pages 36060-EN_Ver4.0/2 to 36067-EN_Ver3.0/2



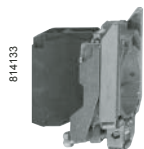
ZB4 BZ009



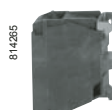
ZBE 101



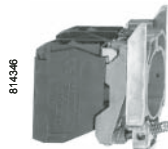
ZBE 203



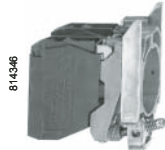
ZB4 BZ101



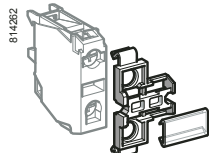
ZBE 201



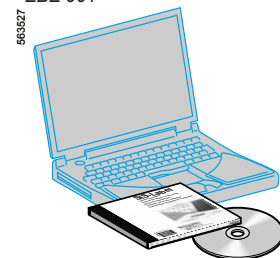
ZB4 BZ106



ZB4 BZ107



ZBZ 001



XBY 2U

Body/fixing collar

For use with	Sold in lots of	Unit reference	Weight kg
Electrical block (contact or light)	10	ZB4 BZ009	0.038

Contact functions (1)

Screw clamp terminal connections (Schneider Electric anti-retightening system)

Contacts for standard applications

Description	Type of contact	Symbol		Sold in lots of	Unit reference	Weight kg
		N/O	N/C			
Contact blocks	Single	1	–	5	ZBE 101	0.011
		–	1	5	ZBE 102	0.011
Contact blocks	Double	2	–	5	ZBE 203	0.020
		–	2	5	ZBE 204	0.020
		1	1	5	ZBE 205	0.020
		1	–	1	ZB4 BZ101	0.053
Contact blocks	Single with body/fixing collar	–	1	1	ZB4 BZ102	0.053
		2	–	1	ZB4 BZ103	0.062
		–	2	1	ZB4 BZ104	0.062
		1	1	1	ZB4 BZ105	0.062
		1	2	1	ZB4 BZ141	0.072
		–	–	–	–	–

Contacts for specific applications

Application	Type of contact	Description	Symbol		Sold in lots of	Unit reference	Weight kg	
			N/O	N/C				
Low power switching	Single	Standard	1	–	5	ZBE 1016	0.012	
			–	1	5	ZBE 1026	0.012	
		Dusty environment (2) (IP5X, 50 µm dust)	1	–	5	ZBE 1016P	0.012	
			–	1	5	ZBE 1026P	0.012	
Staggered contacts	Single	Early make	1	–	5	ZBE 201	0.011	
			–	1	5	ZBE 202	0.011	
		Late break	–	1	5	ZBE 202	0.011	
			–	1	5	ZBE 202	0.011	
		Single with body/fixing collar	Overlapping	1	1	5	ZB4 BZ106	0.062
				–	2	5	ZB4 BZ107	0.062
Single with body/fixing collar	Staggered	–	2	5	ZB4 BZ107	0.062		
		–	2	5	ZB4 BZ107	0.062		

Clip-on legend holders for electrical blocks with screw clamp terminal connections

For use with	Sold in lots of	Unit reference	Weight kg
Identification of an XB4 B control or signalling unit	10	ZBZ 001	0.001

Sheet of 50 blank legends

Legend holder ZBZ 001	10	ZBY 001	0.023
-----------------------	----	---------	-------

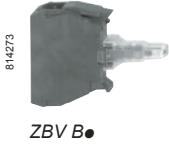
“SIS Label” labelling software (for legends ZBY 001)

For legend design for English, French, German, Italian, Spanish	1	XBY 2U	0.100
--	---	--------	-------

(1) The contact blocks enable variable composition of body/contact assemblies. Maximum number of rows possible: 3. Either 3 rows of 3 single contacts or 1 row of 3 double contacts + 1 row of 3 single contacts (double contacts occupy the first 2 rows). Maximum number of contacts is specified on page 36072-EN_Ver3.0/2.

(2) It is not possible to fit an additional contact block on the back of these contact blocks.

To combine with:
heads, see page 36060-EN_Ver4.0/6



Light blocks

Screw clamp terminal connections (Schneider Electric anti-retightening system)

Description	Supply voltage V	Colour of light source	Sold in lots of	Unit reference	Weight kg	
Integral LED (to combine with heads for integral LED)	≈ 12 (50/60 Hz)	White	5	ZBV J1	0.017	
		Green	5	ZBV J3	0.017	
		Red	5	ZBV J4	0.017	
		Orange	5	ZBV J5	0.017	
		Blue	5	ZBV J6	0.017	
		White	5	ZBV B1	0.017	
	≈ 24 (50/60 Hz)	Green	5	ZBV B3	0.017	
		Red	5	ZBV B4	0.017	
		Orange	5	ZBV B5	0.017	
		Blue	5	ZBV B6	0.017	
		≈ 24...120 (50/60 Hz)	White	5	ZBV BG1	0.017
			Green	5	ZBV BG3	0.017
Red	5		ZBV BG4	0.017		
Orange	5		ZBV BG5	0.017		
Blue	5		ZBV BG6	0.017		
≈ 110...120 (50/60 Hz)	White		5	ZBV G1	0.017	
	Green	5	ZBV G3	0.017		
	Red	5	ZBV G4	0.017		
	Orange	5	ZBV G5	0.017		
	Blue	5	ZBV G6	0.017		
	≈ 230...240 (50/60 Hz)	White	5	ZBV M1	0.017	
Green		5	ZBV M3	0.017		
Red		5	ZBV M4	0.017		
Orange		5	ZBV M5	0.017		
Blue		5	ZBV M6	0.017		

Blocks for "test light" function

For use with	Supply voltage V	Description	Reference	Weight kg
Light blocks	≈ 12 and 24 ≈ 24...120	Single module, 1 connecting wire	ZBZ G156 (1)	0.010
Light blocks with integral LED	≈ 48...230	Double module, with connecting wires	ZBZ M156 (2)	0.010

LED suppressors

For use with	Supply voltage V	Level of protection	Reference	Weight kg
Light blocks with integral LED fitted with screw clamp terminal connections	≈ 120	25...120 VA	ZBZ VG	0.010
	≈ 230	30...230 VA	ZBZ VM	0.010

Flashing light blocks

Screw clamp terminal connections (Schneider Electric anti-retightening system)

Description	Supply voltage V	Colour of light source	Sold in lots of	Unit reference	Weight kg	
Integral LED (to combine with heads for integral LED)	≈ 24 (50/60 Hz)	White	5	ZBV 18B1	0.017	
		Green	5	ZBV 18B3	0.017	
		Red	5	ZBV 18B4	0.017	
		Orange	5	ZBV 18B5	0.017	
		Blue	5	ZBV 18B6	0.017	
		White	5	ZBV 18G1	0.017	
	≈ 110...120 (50/60 Hz)	Green	5	ZBV 18G3	0.017	
		Red	5	ZBV 18G4	0.017	
		Orange	5	ZBV 18G5	0.017	
		Blue	5	ZBV 18G6	0.017	
		≈ 230...240 (50/60 Hz)	White	5	ZBV 18M1	0.017
			Green	5	ZBV 18M3	0.017
Red	5		ZBV 18M4	0.017		
Orange	5		ZBV 18M5	0.017		
Blue	5		ZBV 18M6	0.017		

(1) Block for use with ≈ light blocks with integral LED types ZBV J●, ZBV B●, ZBV BG● or with direct supply light block for BA 9s bulb, ZBV 6.

(2) Block for use ≈ light blocks integral LED types ZBV G●, ZBV M●, see connection on page 36020-EN_Ver17.0/10.

To combine with heads, see pages 36060-EN_Ver4.0/2 to 36067-EN_Ver3.0/2



814264

ZB4 BZ009



PF107777

ZBE 1015



PF107779

ZB4 BZ1015

Body/fixing collar

For use with	Sold in lots of	Unit reference	Weight kg
Electrical block (contact or light)	10	ZB4 BZ009	0.038

Contact functions

Spring terminal connections (1)

Contacts for standard applications

Description	Type of contact	Symbol		Sold in lots of	Unit reference	Weight kg
		N/O	N/C			
Contact blocks	Single	1	–	4	ZBE 1015	0.011
		–	1	4	ZBE 1025	0.011
	Single with body/fixing collar	1	–	1	ZB4 BZ1015	0.053
		–	1	1	ZB4 BZ1025	0.053
		2	–	1	ZB4 BZ1035	0.062
		–	2	1	ZB4 BZ1045	0.062

Light blocks

Spring terminal connections (1)

Description	Supply voltage V	Colour of light source	Sold in lots of	Unit reference	Weight kg
Integral LED (to combine with heads for integral LED)	~ 12 (50/60 Hz)	White	4	ZBV J15	0.016
		Green	4	ZBV J35	0.016
		Red	4	ZBV J45	0.016
		Orange	4	ZBV J55	0.016
		Blue	4	ZBV J65	0.016
	~ 24 (50/60 Hz)	White	4	ZBV B15	0.016
		Green	4	ZBV B35	0.016
		Red	4	ZBV B45	0.016
		Orange	4	ZBV B55	0.016
		Blue	4	ZBV B65	0.016
~ 110...120 (50/60 Hz)	White	4	ZBV G15	0.016	
	Green	4	ZBV G35	0.016	
	Red	4	ZBV G45	0.016	
	Orange	4	ZBV G55	0.016	
	Blue	4	ZBV G65	0.016	
~ 230...240 (50/60 Hz)	White	4	ZBV M15	0.016	
	Green	4	ZBV M35	0.016	
	Red	4	ZBV M45	0.016	
	Orange	4	ZBV M55	0.016	
	Blue	4	ZBV M65	0.016	

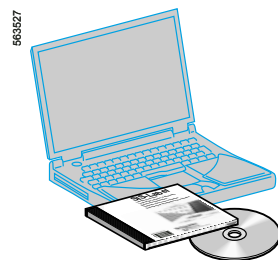
Protected
LED

Sheet of 50 blank legends

For use with	Sold in lots of	Unit reference	Weight kg
Legend holder ZBZ 001	10	ZBY 001	0.023

“SIS Label” labelling software (for legends ZBY 001)

For legend design	Sold in lots of	Unit reference	Weight kg
for English, French, German, Italian, Spanish	10	XBY 2U	0.100

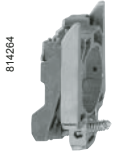


583827

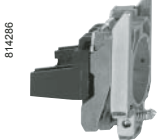
XBY 2U

(1) It is not possible to fit an additional block on the back of these contact or light blocks.

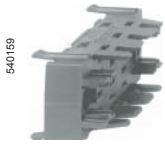
To combine with heads, see pages 36062-EN_Ver3.0/2 to 36067-EN_Ver3.0/2



ZB4 BZ009



ZB4 BZ079 + ZB4 BZ009



ZBZ 01



ZBE 701



ZBE 702



ZBV B7

Body/fixing collar and accessories specifically for printed circuit board mounting (1) Accessories required when using adaptor (socket) ZBZ 010

Description	For use with	Sold in lots of	Unit reference	Weight kg
Body/fixing collar	Electrical block (contact or light)	10	ZB4 BZ009	0.006
Fixing collar/pillar	Printed circuit board support (fixing screw ZBZ 006 to be ordered separately)	10	ZB4 BZ079	0.003
Fixing screw for printed circuit board	Fixing collar/pillar ZB4 BZ079	10	ZBZ 006	0.011

Adapter (socket) (1)

For use with	Thickness of printed circuit board (mm)	Sold in lots of	Unit reference	Weight kg
Electrical block (contact or light)	1.6 ± 0.2	10	ZBZ 010	0.008
	2.2 ± 0.2	10	ZBZ 011	0.008
	3.2 ± 0.2	10	ZBZ 012	0.008

Contact functions (1)

Contacts for standard applications

Description	Type of contact	Circuit symbols		Sold in lots of	Unit reference	Weight kg
		N/O	N/C			
Contact blocks	Single	1	–	5	ZBE 701	0.011
		–	1	5	ZBE 702	0.011

Contacts for specific applications

Application	Type of contact	Circuit symbols		Sold in lots of	Unit reference	Weight kg
		N/O	N/C			
Low power switching	Single	1	–	5	ZBE 1016	0.012
		–	1	5	ZBE 1026	0.012

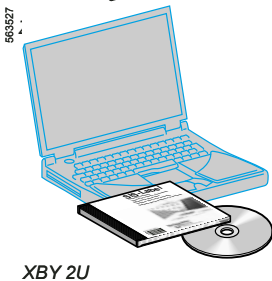
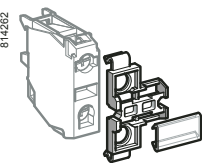
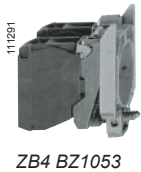
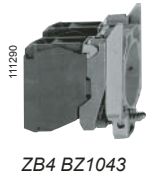
Light blocks (1)

Description	Supply voltage V	Colour of LED	Sold in lots of	Unit reference	Weight kg
Integral LED (to combine with heads for integral LED)	≈ 24 (50/60 Hz)	White	5	ZBV B17	0.004
		Green	5	ZBV B37	0.004
		Red	5	ZBV B47	0.004
		Orange	5	ZBV B57	0.004
		Blue	5	ZBV B67	0.004



(1) For details of support drilling and of printed circuit board: see page 36020-EN_Ver17.0/13

To combine with heads, see pages 36060-EN_Ver4.0/2 to 36067-EN_Ver3.0/2



Contact functions ⁽¹⁾ Faston connectors (6.35 or 2 x 2.8 mm) (Schneider Electric anti-retightening system)

Contacts for standard applications						
Description	Type of contact			Sold in lots of	Unit reference	Weight kg
Contact blocks	Single	1	–	5	ZBE 1013	0.011
		–	1	5	ZBE 1023	0.011
	Double	2	–	5	ZBE 2033	0.020
		–	2	5	ZBE 2043	0.020
		1	1	5	ZBE 2053	0.020
Single with body/fixing collar		1	–	1	ZB4 BZ1013 (2)	0.053
		–	1	1	ZB4 BZ1023 (2)	0.053
		2	–	1	ZB4 BZ1033	0.062
		–	2	1	ZB4 BZ1043	0.062
		1	1	1	ZB4 BZ1053	0.062

Contacts for specific applications							
Application	Type of contact	Description			Sold in lots of	Unit reference	Weight kg
Low power switching	Single	Standard	1	–	5	ZBE 10163 (2)	0.012
			–	1	5	ZBE 10263 (2)	0.012
		Dusty environments (3) (IP5X, 50 µm dust)	1	–	5	ZBE 1016P3 (2)	0.012
			–	1	5	ZBE 1026P3 (2)	0.012
Staggered contacts	Single	Early make	1	–	5	ZBE 2013 (2)	0.011
			–	1	5	ZBE 2023 (2)	0.011
		Late break	–	1	5	ZBE 2023 (2)	0.011

Clip-on legend holders for electrical blocks with screw clamp terminal connections

For use with	Sold in lots of	Unit reference	Weight kg
Identification of an XB4 B control or signalling unit	10	ZBZ 001	0.001

Sheet of 50 blank legends

Legend holder ZBY 001	10	ZBY 001	0.023
-----------------------	----	---------	-------

“SIS Label” labelling software (for legends ZBY 001)

For legend design for English, French, German, Italian, Spanish	1	XBY 2U	0.100
---	---	--------	-------

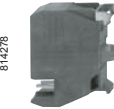
- (1) The contact blocks enable variable composition of body/contact assemblies. Maximum number of rows possible: 3.
Either 3 rows of 3 single contacts or 1 row of 3 double contacts + 1 row of 3 single contacts (double contacts occupy the first 2 rows).
- (2) To order products with screw clamp terminal connections for lugs, replace the 3 at the end of the reference with a 9.
Example: ZBE 1013 becomes ZBE 1019.
- (3) It is not possible to fit an additional contact block on the back of these contact blocks.

To combine with heads, see pages 36060-EN_Ver4.0/2 to 36067-EN_Ver3.0/2



814284

ZB4 BZ009



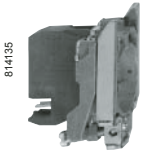
814278

ZBE 1014



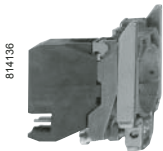
814279

ZBE 1024



814135

ZB4 BZ1014



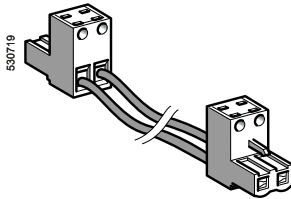
814136

ZB4 BZ1024



814280

ZBV B4



500719

APE 1C2250

Body/fixing collar

For use with	Sold in lots of	Unit reference	Weight kg
Electrical block (contact or light)	6	ZB4 BZ009	0.038

Contact functions

Plug-in connector (1)

Contacts for standard applications

Description	Type of contact	Symbol		Sold in lots of	Unit reference	Weight kg
		N/O	N/C			
Contact blocks	Single	1	–	5	ZBE 1014	0.011
		–	1	5	ZBE 1024	0.011
	Single with body/fixing collar	1	–	1	ZB4 BZ1014	0.050
		–	1	1	ZB4 BZ1024	0.050
		2	–	1	ZB4 BZ1034	0.058
		–	2	1	ZB4 BZ1044	0.058
		1	1	1	ZB4 BZ1054	0.058
		1	2	1	ZB4 BZ1414	0.064

Light blocks

Plug-in connector

Description	Supply voltage (V)	Colour of light source	Sold in lots of	Unit reference	Weight kg	
Integral LED (to combine with heads for integral LED)	≈ 24 (50/60 Hz)	White	5	ZBV B14	0.016	
		Green	5	ZBV B34	0.016	
		Red	5	ZBV B44	0.016	
		Orange	5	ZBV B54	0.016	
		Blue	5	ZBV B64	0.016	
		~ 110...120 (50/60 Hz)	White	5	ZBV G14	0.016
			Green	5	ZBV G34	0.016
			Red	5	ZBV G44	0.016
			Orange	5	ZBV G54	0.016
			Blue	5	ZBV G64	0.016
~ 230...240 (50/60 Hz)	White	5	ZBV M14	0.016		
	Green	5	ZBV M34	0.016		
	Red	5	ZBV M44	0.016		
	Orange	5	ZBV M54	0.016		
	Blue	5	ZBV M64	0.016		

Protected
LED

Connecting cables and connector

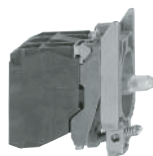
Description	Number of connectors	Wire c.s.a. mm ²	Length mm	Sold in lots of	Unit reference	Weight kg
Cables with connectors 2-pin, 5.08 mm pitch	1	0.75	500	8	APE 1C2150	0.120
	2	0.75	500	8	APE 1C2250	0.180
Spring terminal connector 2-pin, 5.08 mm pitch	–	0.2 to 2.5	–	10	APE 1PRE21	0.003

(1) It is not possible to fit an additional contact block on the back of these contact blocks.

To combine with:

heads, see pages 36060-EN_Ver4.0/5 to 36065-EN_Ver3.0/5

contacts, see page 36068-EN_Ver4.0/2



ZB4 BW0●●3

Complete body/contact assemblies and light blocks ⁽¹⁾

Screw clamp terminal connections (Schneider Electric anti-retightening system)

Light source	Supply voltage	Type of contact		Colour of light source	Reference	Weight
		N/O	N/C			
	V					kg
Direct supply						
Integral LED Protected LED	~ 24 (50/60 Hz)	1	-	White	ZB4 BW0B11	0.064
				Green	ZB4 BW0B31	0.064
				Red	ZB4 BW0B41	0.064
				Orange	ZB4 BW0B51	0.064
				Blue	ZB4 BW0B61	0.064
		-	1	White	ZB4 BW0B12	0.064
				Green	ZB4 BW0B32	0.064
				Red	ZB4 BW0B42	0.064
				Orange	ZB4 BW0B52	0.064
				Blue	ZB4 BW0B62	0.064
	2	-	White	ZB4 BW0B13	0.074	
			Green	ZB4 BW0B33	0.074	
			Red	ZB4 BW0B43	0.074	
			Orange	ZB4 BW0B53	0.074	
			Blue	ZB4 BW0B63	0.074	
	1	1	White	ZB4 BW0B15	0.074	
			Green	ZB4 BW0B35	0.074	
			Red	ZB4 BW0B45	0.074	
			Orange	ZB4 BW0B55	0.074	
			Blue	ZB4 BW0B65	0.074	
~ 110...120 (50/60 Hz)	1	-	White	ZB4 BW0G11	0.064	
			Green	ZB4 BW0G31	0.064	
			Red	ZB4 BW0G41	0.064	
			Orange	ZB4 BW0G51	0.064	
			Blue	ZB4 BW0G61	0.064	
	-	1	White	ZB4 BW0G12	0.064	
			Green	ZB4 BW0G32	0.064	
			Red	ZB4 BW0G42	0.064	
			Orange	ZB4 BW0G52	0.064	
			Blue	ZB4 BW0G62	0.064	
2	-	White	ZB4 BW0G13	0.074		
		Green	ZB4 BW0G33	0.074		
		Red	ZB4 BW0G43	0.074		
		Orange	ZB4 BW0G53	0.074		
		Blue	ZB4 BW0G63	0.074		
1	1	White	ZB4 BW0G15	0.074		
		Green	ZB4 BW0G35	0.074		
		Red	ZB4 BW0G45	0.074		
		Orange	ZB4 BW0G55	0.074		
		Blue	ZB4 BW0G65	0.074		

Other versions

Complete bodies with Faston connector terminals (6.35 or 2 x 2.8).
Please consult your Regional Sales Office.

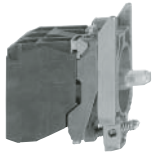
(1) Can be fitted with additional contact blocks: see page 36068-EN_Ver4.0/2.

Control and signalling units Ø 22

Harmony® XB4, metal

Body/contact assemblies + light blocks with integral LED

To combine with:
heads, see pages 36060-EN_Ver4.0/5 to 36065-EN_Ver3.0/5
contacts, see page 36068-EN_Ver4.0/2



ZB4 BW0...3

Complete body/contact assemblies and light blocks ⁽¹⁾ (continued)						
Screw clamp terminal connections (Schneider Electric anti-retightening system)						
Light source	Supply voltage	Type of contact		Colour of light source	Reference	Weight
		N/O	N/C			
	V					kg
Direct supply (continued)						
Integral LED Protected LED	~ 230...240 (50/60 Hz)	1	-	White	ZB4 BW0M11	0.064
				Green	ZB4 BW0M31	0.064
				Red	ZB4 BW0M41	0.064
				Orange	ZB4 BW0M51	0.064
				Blue	ZB4 BW0M61	0.064
		-	1	White	ZB4 BW0M12	0.064
				Green	ZB4 BW0M32	0.064
				Red	ZB4 BW0M42	0.064
				Orange	ZB4 BW0M52	0.064
				Blue	ZB4 BW0M62	0.064
	2	-	White	ZB4 BW0M13	0.074	
			Green	ZB4 BW0M33	0.074	
			Red	ZB4 BW0M43	0.074	
			Orange	ZB4 BW0M53	0.074	
			Blue	ZB4 BW0M63	0.074	
	1	1	White	ZB4 BW0M15	0.074	
			Green	ZB4 BW0M35	0.074	
			Red	ZB4 BW0M45	0.074	
			Orange	ZB4 BW0M55	0.074	
			Blue	ZB4 BW0M65	0.074	

Other versions Complete bodies with Faston connector terminals (6.35 or 2 x 2.8).
Please consult your Regional Sales Office.

⁽¹⁾ Can be fitted with additional contact blocks: see page 36068-EN_Ver4.0/2.

Control and signalling units Ø 22

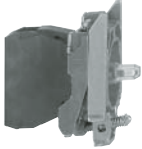
Harmony® XB4, metal

Body/light assemblies for pilot lights with integral LED

To combine with:

heads, see page 36066-EN_Ver3.0/2
contacts, see page 36068-EN_Ver4.0/2

814207



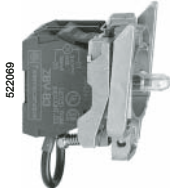
ZB4 BV●●

Complete light bodies (fixing collar + light block with integral LED)**Screw clamp terminal connections** (Schneider Electric anti-retightening system)

Light source	Supply voltage V	Colour of light source	Reference	Weight kg
Integral LED Protected LED	≈ 12 (50/60 Hz)	White	ZB4 BVJ1	0.054
		Green	ZB4 BVJ3	0.054
		Red	ZB4 BVJ4	0.054
		Orange	ZB4 BVJ5	0.054
		Blue	ZB4 BVJ6	0.054
		≈ 24 (1) (50/60 Hz)	White	ZB4 BVB1
Green	ZB4 BVB3		0.054	
Red	ZB4 BVB4		0.054	
Orange	ZB4 BVB5		0.054	
Blue	ZB4 BVB6		0.054	
≈ 24...120 (50/60 Hz)	White		ZB4 BVBG1	0.054
	Green	ZB4 BVBG3	0.054	
	Red	ZB4 BVBG4	0.054	
	Orange	ZB4 BVBG5	0.054	
	Blue	ZB4 BVBG6	0.054	
	≈ 110...120 (1) (50/60 Hz)	White	ZB4 BVG1	0.054
Green		ZB4 BVG3	0.054	
Red		ZB4 BVG4	0.054	
Orange		ZB4 BVG5	0.054	
Blue		ZB4 BVG6	0.054	
≈ 230...240 (1) (50/60 Hz)		White	ZB4 BVM1	0.054
	Green	ZB4 BVM3	0.054	
	Red	ZB4 BVM4	0.054	
	Orange	ZB4 BVM5	0.054	
	Blue	ZB4 BVM6	0.054	

(1) Complete bodies with Faston connector terminals (6.35 or 2 x 2.8), see page 36068-EN_Ver4.1/6.

To combine with:
heads, see page 36066-EN_Ver3.0/2
contacts, see page 36068-EN_Ver4.0/2



ZB4 BVB●156

Complete light bodies with 3-terminal "test" function

(fixing collar + light block with integral LED + pre-wired block for "test light" function)
Screw clamp terminal connections (Schneider Electric anti-retightening system)

Light source	Supply voltage V	Colour of light source	Reference	Weight kg
Integral LED Protected LED	≈ 24 (1) (50/60 Hz)	White	ZB4 BVB1156	0.054
		Green	ZB4 BVB3156	0.054
		Red	ZB4 BVB4156	0.054
		Orange	ZB4 BVB5156	0.054
		Blue	ZB4 BVB6156	0.054

Complete bodies with flashing pilot light (fixing collar + light block with integral LED)

Screw clamp terminal connections (Schneider Electric anti-retightening system)

Light source	Supply voltage V	Colour of light source	Reference	Weight kg
Integral LED Protected LED	≈ 24 (50/60 Hz)	White	ZB4 BV18B1	0.054
		Green	ZB4 BV18B3	0.054
		Red	ZB4 BV18B4	0.054
		Orange	ZB4 BV18B5	0.054
		Blue	ZB4 BV18B6	0.054
		~ 110...120 (50/60 Hz)	White	ZB4 BV18G1
	Green	ZB4 BV18G3	0.054	
	Red	ZB4 BV18G4	0.054	
	Orange	ZB4 BV18G5	0.054	
	Blue	ZB4 BV18G6	0.054	
	~ 230...240 (50/60 Hz)	White	ZB4 BV18M1	0.054
		Green	ZB4 BV18M3	0.054
		Red	ZB4 BV18M4	0.054
		Orange	ZB4 BV18M5	0.054
		Blue	ZB4 BV18M6	0.054

(1) For a ~ 120 or 230 V supply, use complete body ZB4 BVG● or ZB4 BVM● with block for "test light" function type ZBZ M156, see page 36066-EN_Ver3.0/2 and 36068-EN_Ver4.1/3.

To combine with:

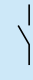
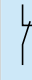
heads, see page 36060-EN_Ver4.0/7

contacts, see page 36068-EN_Ver4.0/2

Complete body/contact assemblies and light blocks (1)

For bulb with BA 9s base fitting (incandescent, neon or LED)

Screw clamp terminal connections (Schneider Electric anti-retightening system)

Light source	Supply voltage V	Type of contact		Colour of light source	Reference	Weight kg
		 N/O	 N/C			
Direct supply						
BA9s base fitting bulb, 2.4 W max, not included (2)	≤ 250	1	–	–	ZB4 BW061	0.063
		–	1	–	ZB4 BW062	0.063
		2	–	–	ZB4 BW063	0.073
		1	1	–	ZB4 BW065	0.073
Supply via integral transformer (1.2 VA, 6 V secondary)						
BA9s base fitting incandescent bulb, included	~ 110...120 50/60 Hz	1	–	–	ZB4 BW031	0.141
		1	1	–	ZB4 BW035	0.151
	~ 230 50 Hz ~ 220...240 60 Hz	1	–	–	ZB4 BW041	0.141
		1	1	–	ZB4 BW045	0.151
		1	–	–	ZB4 BW051	0.141
		1	1	–	ZB4 BW055	0.151
BA9s base fitting LED, included	~ 110...120 50/60 Hz	1	1	White	ZB4 BW03D15	0.151
				Green	ZB4 BW03D35	0.151
				Red	ZB4 BW03D45	0.151
				Orange	ZB4 BW03D55	0.151
				Blue	ZB4 BW03D65	0.151
	~ 230 50 Hz ~ 220...240 60 Hz	1	1	White	ZB4 BW04D15	0.151
				Green	ZB4 BW04D35	0.151
				Red	ZB4 BW04D45	0.151
				Orange	ZB4 BW04D55	0.151
				Blue	ZB4 BW04D65	0.151
	~ 400 50/60 Hz	1	1	White	ZB4 BW05D15	0.152
				Green	ZB4 BW05D35	0.152
Red				ZB4 BW05D45	0.152	
Orange				ZB4 BW05D55	0.152	
Blue				ZB4 BW05D65	0.152	

Other versions

Complete bodies with integral transformer incorporating Faston connector terminals (6.35 or 2 x 2.8). Please consult your Regional Sales Office.

(1) Can be fitted with additional contact blocks: see page 36068-EN_Ver4.0/2.

(2) Bulb to be ordered separately: see page 36071-EN_Ver4.0/4.

To combine with:

heads, see page 36066-EN_Ver3.0/3

contacts, see page 36068-EN_Ver4.0/2

Light blocks**Screw clamp terminal connections** (Schneider Electric anti-retightening system)

Description	Supply voltage V	Sold in lots of	Unit reference	Weight kg
Direct supply for BA 9s base fitting bulb, 2.4 W max., not included (1)	≤ 250	5	ZBV 6	0.016

Complete light bodies (fixing collar + light block)**For bulb with BA 9s base fitting (incandescent, neon or LED)****Screw clamp terminal connections** (Schneider Electric anti-retightening system)

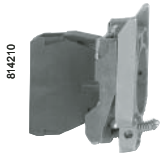
Light source	Supply voltage V	Colour of light source	Reference	Weight kg
Direct supply				
BA 9s base fitting bulb, 2.4 W max, not included (1)	≤ 250	–	ZB4 BV6	0.052
Supply via integral transformer (1.2 VA, 6 V secondary)				
BA 9s base fitting incandescent bulb, included	~ 110...120 -50/60 Hz	–	ZB4 BV3	0.130
	~ 230 - 50 Hz	–	ZB4 BV4	0.130
	~ 220...240 - 60 Hz	–	ZB4 BV5	0.131
	~ 400 - 50 Hz	–	ZB4 BV8	0.128
	~ 440...480 - 60 Hz	–	ZB4 BV9	0.131

BA 9s base fitting LED, included	~ 110...120 - 50/60 Hz	White	ZB4 BV3D1	0.134	
		Green	ZB4 BV3D3	0.134	
		Red	ZB4 BV3D4	0.134	
		Orange	ZB4 BV3D5	0.134	
		Blue	ZB4 BV3D6	0.134	
		~ 230 - 50 Hz	White	ZB4 BV4D1	0.134
	~ 220...240 - 60 Hz	Green	ZB4 BV4D3	0.134	
		Red	ZB4 BV4D4	0.134	
		Orange	ZB4 BV4D5	0.134	
		Blue	ZB4 BV4D6	0.134	
		~ 400 - 50/60 Hz	White	ZB4 BV5D1	0.134
			Green	ZB4 BV5D3	0.134
Red	ZB4 BV5D4		0.134		
Orange	ZB4 BV5D5		0.134		
Blue	ZB4 BV5D6		0.134		

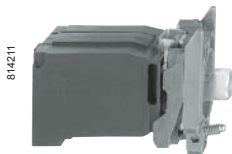
Complete light bodies with 3-terminal "test" function (fixing collar + light block)**For bulb with BA 9s base fitting (incandescent, neon or LED)****Screw clamp terminal connections** (Schneider Electric anti-retightening system)**Direct supply**

BA 9s base fitting bulb, 2.4 W max, not included (1)	≤ 250	–	ZB4 BV156	0.062
--	-------	---	-----------	-------

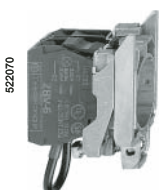
(1) Bulb to be ordered separately, see page 36071-EN_Ver4.0/4.

Other versions Complete bodies with Faston connector terminals (6.35 or 2 x 2.8), see page 36068-EN_Ver4.0/3.

ZB4 BV6



ZB4 BV



ZB4 BV156