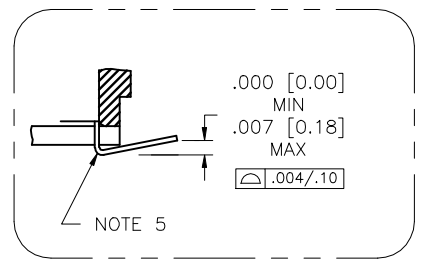
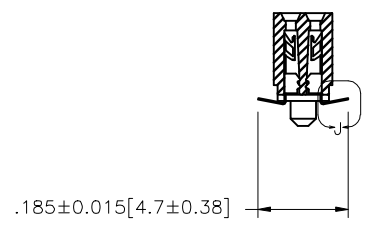
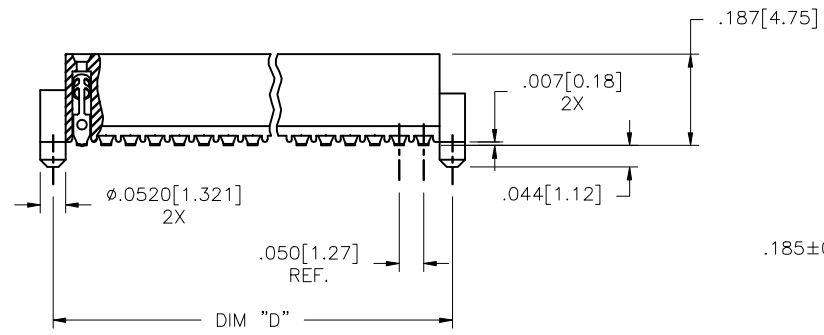
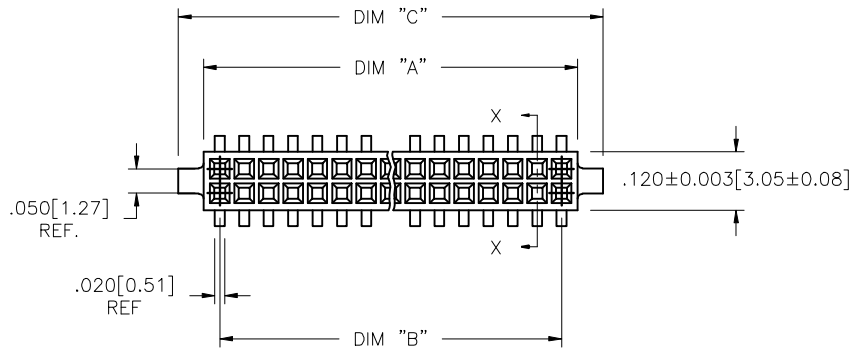


PRODUCT NUMBER  
SEE TABLE



DETAIL J  
SCALE 10/1

mat'l. code		surface		tolerance		projection		product family	
-		ISO 1302 ✓		ISO 406 ISO 1101				RIB CAGE	
tolerances unless otherwise specified		angles		linear		INCH/MM		title	
ltr	ecn no	dr	date	xxx ±.01/.3	xxx ±.005/.13		.050cc VERT. CARD CONN.		
AA	V10994	DLW	3/09/01	xxx ±.0020/.050		scale 3:1		SURF. MT. W/LOC. FEATURES	
AB	V11674	CRG	6/22/01					dwg no	
AC	M05-0084	MHT	5/05/05					sheet 1 of 4 size	
AD	M06-0284	AEA	7/27/06	dr		M. CLOUSER		5/25/91	
AE	M07-0267	MHT	6/08/07	engr		B. BARUFFALO		5/25/91	
AF	M07-0345	AGS	7/26/07	chr		B. BARUFFALO		5/25/91	
AG	M09-0058	CMR	4/06/09	appd		B. BARUFFALO		5/25/91	
sheet	revision	AG	AG	AG	AG			type Product Customer Drawing	
index	sheet	1	2	3	4				



Copyright FCJ

PRODUCT NO.  
87023 - XXX

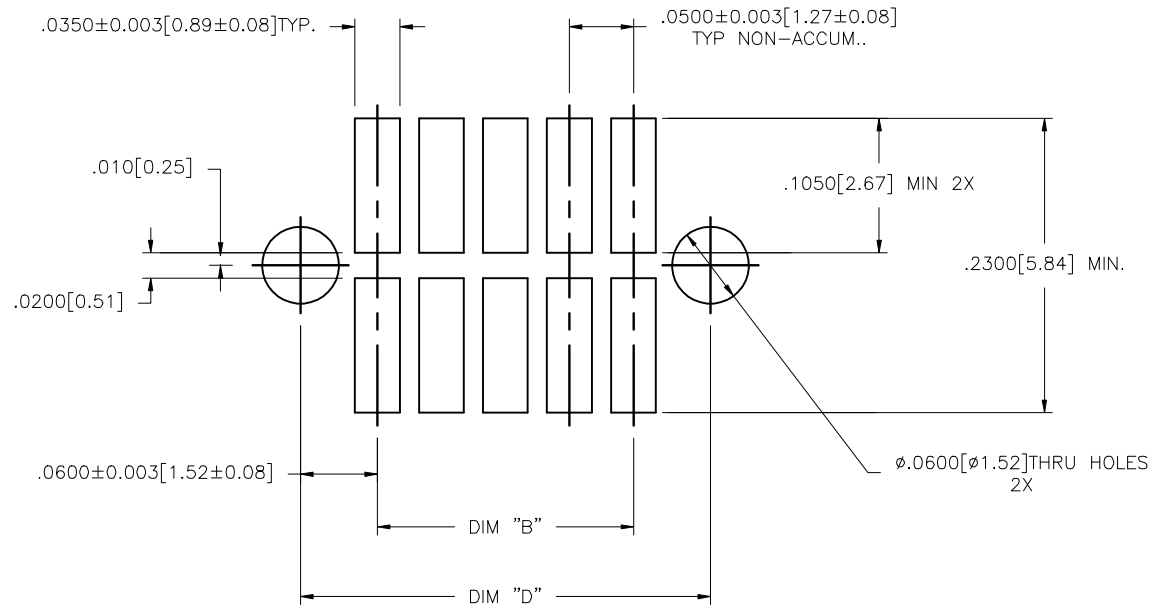
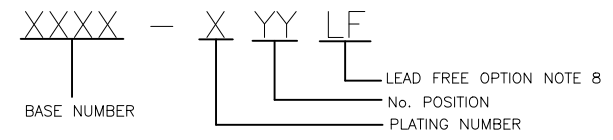


FIGURE A  
RECOMMENDED  
P.C.B. LAYOUT

mat'l. code		surface		tolerance		projection		product family	
-		ISO 1302		ISO 406 ISO 1101				RIB CAGE	
ltr		ecn no		dr		date		title	
AG								.050cc VERT. CARD CONN. SURF. MT. W/LOC. FEATURES	
		angles		linear		INCH/MM		scale 3:1	
		°±2'		xx ±.01/.3 xxx ±.005/.13 xxxx ±.0020/.050				dwg no 87023 sheet 2 of 4 size A3	
dr		M. CLOUSER		5/25/91				type Product Customer Drawing	
engr		B. BARUFFALO		5/25/91					
chr		B. BARUFFALO		5/25/91					
appd		B. BARUFFALO		5/25/91					
sheet index		revision sheet							

PRODUCT NO. NOTE 8	SIZE	DIM A	DIM B	DIM C	DIM D	SPECIAL PACKAGING	TAPE WIDTH PITCH	PIECES PER REEL
87023-605	2 X 5	.266/6.756	.200/5.08	.370/9.398	.3200/8.128	NO	—	—
-610	2 X 10	.516/13.106	.450/11.43	.620/15.748	.5700/14.478	NOTE 6	24mm 12mm	750
-615	2 X 15	.766/19.456	.700/17.78	.870/22.098	.8200/20.828	NOTE 6	44mm 12mm	500
-620	2 X 20	1.016/25.806	.950/24.13	1.120/28.448	1.0700/27.178	NOTE 6 & 7	44mm 12mm	500
-625	2 X 25	1.266/32.156	1.200/30.48	1.370/34.798	1.3200/33.528	NOTE 6	56mm 12mm	500
-630	2 X 30	1.516/38.506	1.450/36.83	1.620/41.148	1.5700/39.878	NOTE 6 & 7	56mm 12mm	500
-635	2 X 35	1.766/44.856	1.700/43.18	1.870/47.498	1.8200/46.228	NO	—	—
-640	2 X 40	2.016/51.206	1.950/49.53	2.120/53.848	2.0700/52.578	NOTE 7	—	—
-645	2 X 45	2.266/57.556	2.200/55.88	2.370/60.198	2.3200/58.928	NO	—	—
-650	2 X 50	2.516/63.906	2.450/62.23	2.620/66.548	2.5700/65.278	NO	—	—
-905	2 X 5	.266/6.756	.200/5.08	.370/9.398	.3200/8.128	NO	—	—
-910	2 X 10	.516/13.106	.450/11.43	.620/15.748	.5700/14.478	NO	—	—
-915	2 X 15	.766/19.456	.700/17.78	.870/22.098	.8200/20.828	NO	—	—
-920	2 X 20	1.016/25.806	.950/24.13	1.120/28.448	1.0700/27.178	—	—	—
-925	2 X 25	1.266/32.156	1.200/30.48	1.370/34.798	1.3200/33.528	NO	—	—
-930	2 X 30	1.516/38.506	1.450/36.83	1.620/41.148	1.5700/39.878	NO	—	—
-935	2 X 35	1.766/44.856	1.700/43.18	1.870/47.498	1.8200/46.228	NO	—	—
-940	2 X 40	2.016/51.206	1.950/49.53	2.120/53.848	2.0700/52.578	NO	—	—
-945	2 X 45	2.266/57.556	2.200/55.88	2.370/60.198	2.3200/58.928	NO	—	—
87023-950	2 X 50	2.516/63.906	2.450/62.23	2.620/66.548	2.5700/65.278	NO	—	—



NOTES:

- ① HOUSING MATERIAL:  
GLASS FILLED THERMOPLASTIC FLAME RETARDANT PER UL 94V-0  
COLOR: NATURAL
- ② TERMINAL MATERIAL: BeCu
- ③ TERMINAL PLATING:  
LEAD FREE OPTION  
-6XXLF- 30u"/.76u MIN HARD GOLD OVER Ni ON CONTACT ZONES.  
100u"/2.54u MIN PURE TIN OVER Ni  
IN SOLDERING ZONES, OTHERWISE GOLD FLASH OR UNPLATED.  
-9XXLF- 60u"/1.52u MIN HARD GOLD ON CONTACT ZONES,  
100u"/2.54u MIN PURE TIN OVER Ni  
OVER Ni IN SOLDERING ZONES, OTHERWISE GOLD FLASH OR UNPLATED.  
TIN LEAD OPTION  
-6XX- 30u"/.76u MIN HARD GOLD OVER Ni ON CONTACT ZONES.  
100u"/2.54u MIN SnPb OVER Ni  
IN SOLDERING ZONES, OTHERWISE GOLD FLASH OR UNPLATED.
- 4 APPLICATION INFORMATION:  
A. RECOMMENDED MOUNTING PAD PATTERN IS SHOWN IN FIGURE "A".  
B. MATING PINS TO BE .0176/.447 TO .0181/.459 DIA.  
C. MATING PIN TIPS TO BE IN TRUE POSITION TO MATING GRID WITHIN .006/.15 DIA.  
D. SUGGESTED MATING PIN LENGTH .130/3.30 ±.010/.25.

- ⑤ LEAD TIPS TO BE ABOVE HEEL, UP TO .007/0.18 MAX. COPLANARITY TO BE MEASURED AT LOWEST POINT (HEEL).
- ⑥ ADD "TR" TO END OF DASH NUMBER FOR TAPE AND REEL PACKAGED WITH CAP. TOOLED ONLY FOR NOTED CONNECTORS.
- 7. ADD "CT" TO END OF DASH NUMBER FOR CONNECTOR WITH CAP FOR VACUUM PICKUP IN TUBE.
- ⑧ ADD LF SUFFIX AT THE END OF PART NUMBER FOR LEAD FREE OPTION.
- 9. THE HOUSING WILL WITHSTAND EXPOSURE TO 260°C PEAK TEMPERATURE FOR 20 SECONDS IN A CONVECTION, INFRA-RED OR VAPOR PHASE REFLOW OVEN. SEE APPLICATION NOTE/PROCEDURES IF THEY ARE AVAILABLE.
- ⑩ THIS PRODUCT MEETS EUROPEAN UNION DIRECTIVES AND OTHER COUNTRY REGULATION AS DESCRIBED IN GS-22-008.

mat'l. code	surface	tolerance	projection	product family
-	ISO 1302	ISO 406	ISO 1101	RIB CAGE
ltr	ecp no	dr	date	title
AG				.050cc VERT. CARD CONN. SURF. MT. W/LOC. FEATURES
	angles	linear	xx ±.01/.3 xxx ±.005/.13 0±z	INCH/MM Scale 3:1
	dr	engr	chr	appd
	M. CLOUSER	B. BARUFFALO	B. BARUFFALO	B. BARUFFALO
	5/25/91	5/25/91	5/25/91	5/25/91
sheet	revision			
index	sheet			



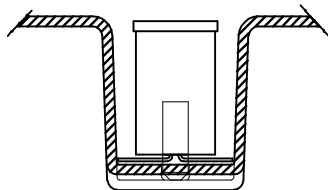
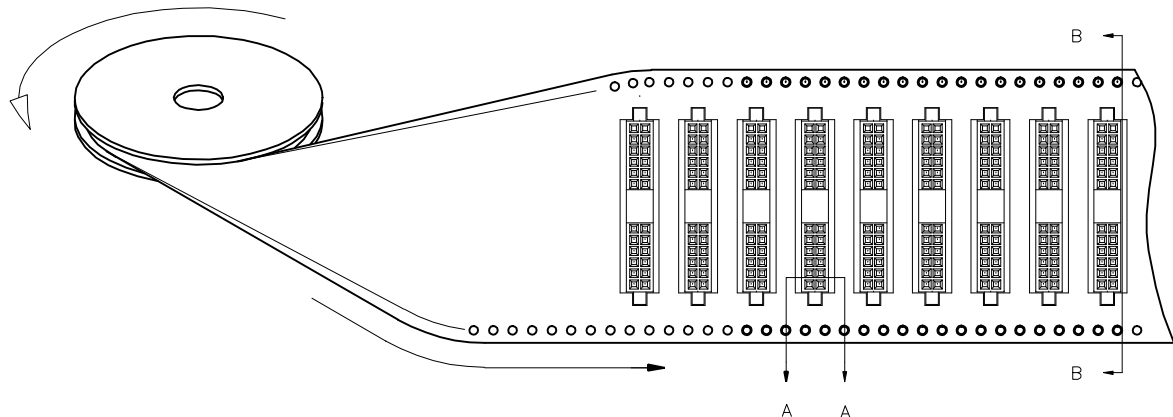
Copyright FCJ  
FCJconnect.com

PRODUCT NUMBER  
SEE TABLE

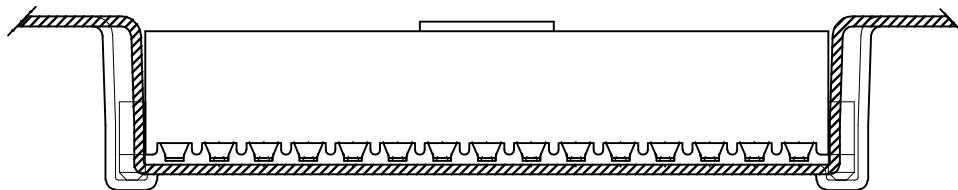
UNREELING  
DIRECTION

REFERENCE ONLY

TAPE WIDTH'S 32mm AND ABOVE HAS BOTH FEED TRACKS,  
BELOW 32mm HAS TOP FEED TRACK ONLY.



SECTION A-A



SECTION B-B

mat'l. code		surface		tolerance		projection		product family	
-		ISO 1302		ISO 406		ISO 1101		RIB_CAGE	
tr		ecn no		dr		date		title	
AG								.050cc VERT. CARD CONN.	
								SURF. MT. W/LOC. FEATURES	
								dwg no	
								87023	
								sheet 4 of 4 size	
								A3	
								type	
								Product Customer Drawing	
sheet		revision							
index		sheet							

form A3

FCJ  
FCconnect.com

Copyright FCJ