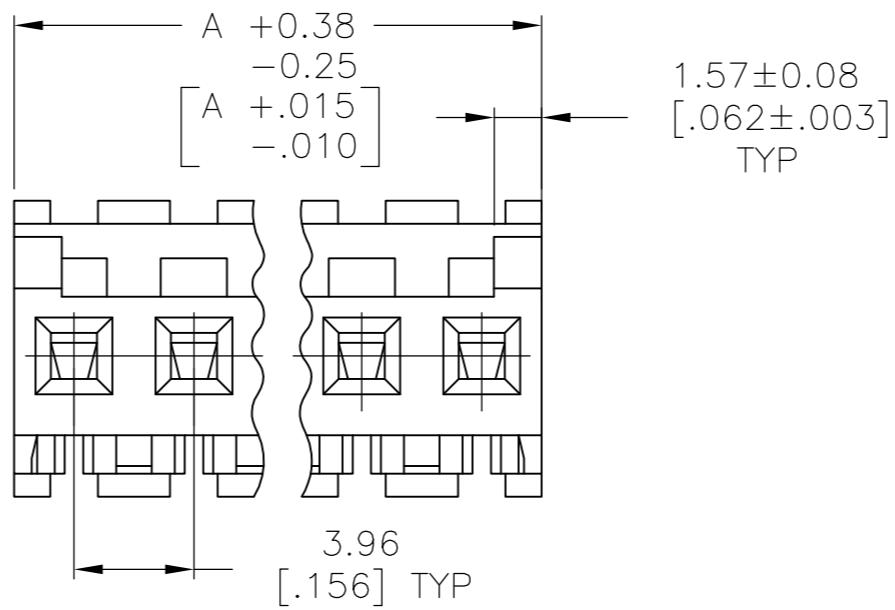
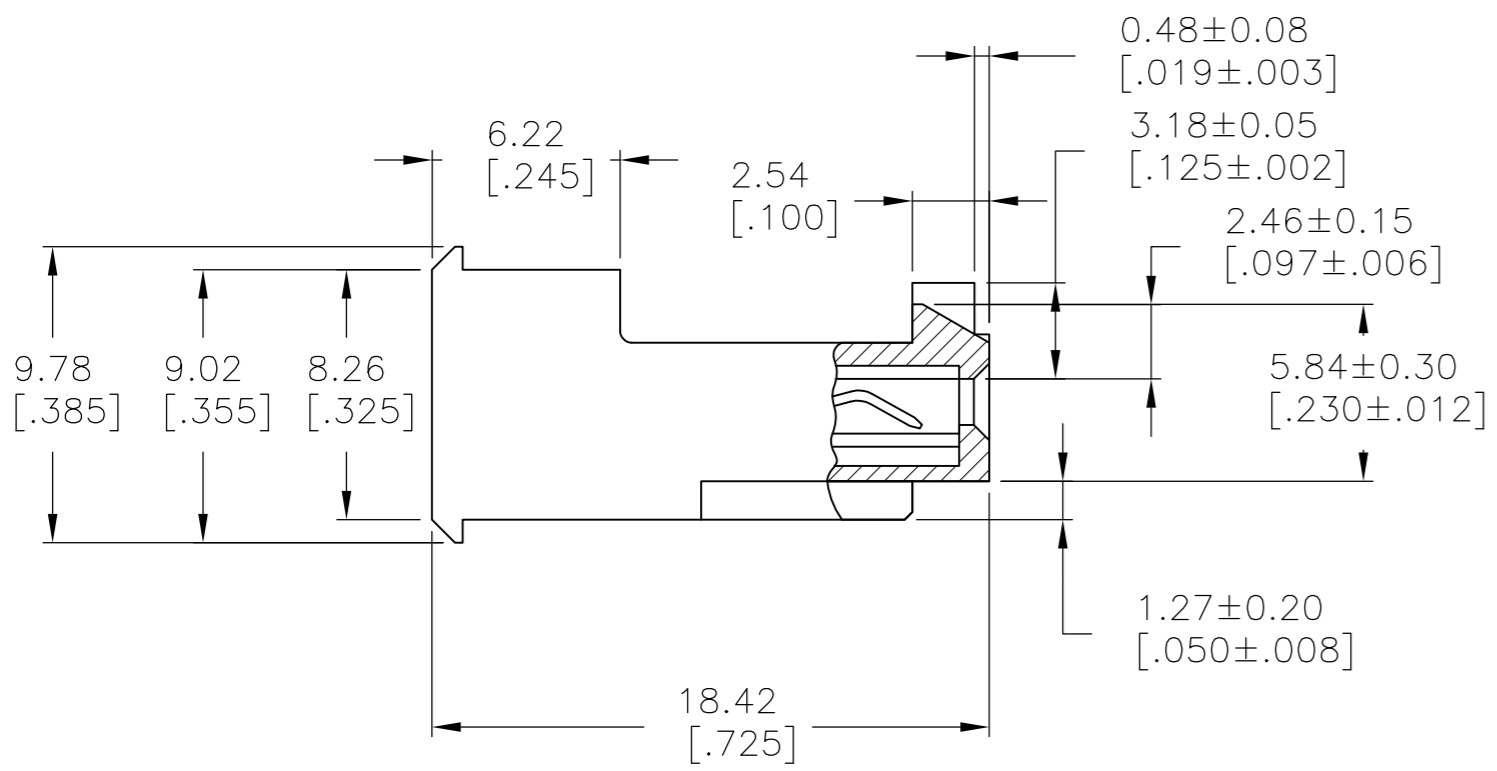
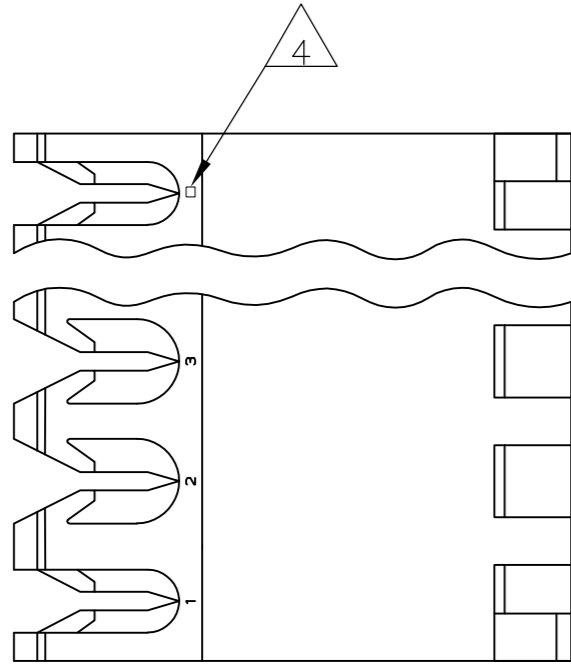


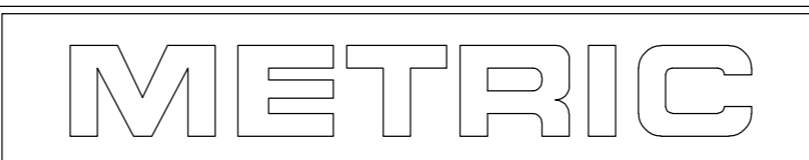
THIS DRAWING IS UNPUBLISHED. RELEASED FOR PUBLICATION
 © COPYRIGHT - By - ALL RIGHTS RESERVED.

LOC	DIST	REVISIONS					
CM	00	P	LTR	DESCRIPTION	DATE	DWN	APVD
		E		REVISED PER ECO-12-007611	03AUG12	KH	SM



55.47[2.184]	14	4-644465-4
51.51[2.028]	13	4-644465-3
47.55[1.872]	12	4-644465-2
43.59[1.716]	11	4-644465-1
39.62[1.560]	10	4-644465-0
35.66[1.404]	9	3-644465-9
31.70[1.248]	8	3-644465-8
27.74[1.092]	7	3-644465-7
23.77[.936]	6	3-644465-6
19.81[.780]	5	3-644465-5
15.85[.624]	4	3-644465-4
11.89[.468]	3	3-644465-3
7.92[.312]	2	3-644465-2
7 SUPERSEDED	14	1-644465-4
7 SUPERSEDED	13	1-644465-3
47.55[1.872]	12	1-644465-2
43.59[1.716]	11	1-644465-1
39.62[1.560]	10	1-644465-0
35.66[1.404]	9	644465-9
31.70[1.248]	8	644465-8
27.74[1.092]	7	644465-7
23.77[.936]	6	644465-6
19.81[.780]	5	644465-5
15.85[.624]	4	644465-4
11.89[.468]	3	644465-3
7.92[.312]	2	644465-2
DIM A	NO. OF CIRCUITS	PART NO.

- 1 MATERIAL: CONNECTOR - NYLON UL94V-2
CONTACTS - 0.30[.012] THICK COPPER ALLOY (BRIGHT TIN-LEAD 0.00203[.000080] MIN. THICK FOR CONTACTS 644465-2 THRU 1-644465-4) (WHISKER MITIGATED TIN 0.00203[.000080] MIN THICKNESS OVER NICKEL UNDERPLATE FOR 3-644465-2 THRU 4-644465-4).
- 2 CONTACTS ACCEPT 18 AWG WIRE WITH 2.41[.095] MAX INSULATION DIAMETER.
- 3 CONTACTS MUST ACCEPT 1.14±0.03[.045±.001] SQUARE POST AND REMAIN LOCKED IN POSITION.
- 4 IDENTIFICATION NUMBER FOR LAST CIRCUIT MAY NOT APPEAR ON ALL ASSEMBLIES.
- 5 DIMENSIONS IN BRACKETS ARE IN INCHES.
- 6 HOUSING FEATURES ARE: FEED-THRU WITH LOCKING RAMP AND POLARIZING TAB.
- 7 OBSOLETE PARTS: OBSOLETE CIS STREAMLINING PER D.RENAUD/D.SINISI
- 8 ORANGE COLOR STRIPE ON HOUSING (NOT SHOWN) MAY RUN DOWN BETWEEN RIBS



THIS DRAWING IS A CONTROLLED DOCUMENT.

DIMENSIONS: mm [INCHES]	TOLERANCES UNLESS OTHERWISE SPECIFIED: 0 PLC ± - 1 PLC ± - 2 PLC ± - 3 PLC ± 0.13 [.005] 4 PLC ± - ANGLES ± -	DWN S. CARPENTER 14AUG2003 CHK D. BOSSI 14AUG2003 APVD D. BOSSI 14AUG2003		
		PRODUCT SPEC 108-1051 APPLICATION SPEC 114-1020	NAME MTA 156 CONNECTOR ASSEMBLY, 18 AWG, STANDARD	
MATERIAL 1	FINISH 1	WEIGHT -	SIZE A2	CAGE CODE 00779
CUSTOMER DRAWING			DRAWING NO. C-644465	RESTRICTED TO -
			SCALE 4:1	SHEET 1 OF 1