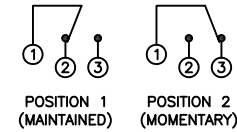


SCHMATIC



SPECIFICATIONS

FUNCTION:  
1P2T ON-(ON)

RATING:  
ANSI/UL 1054 and CAN/CSA C22.2 No.55 (E194579):  
16A 125VAC [cURus]  
12A 250VAC [cURus]  
1HP 125/250VAC [cURus]

CONTACT RESISTANCE:  
Initial: 30mΩ Max.

TEMPERATURE:  
Operating: 0°C to 85°C [cURus]

ELECTRICAL LIFE:  
6,000 Cycles [cURus]

APPROVALS:



COLORS

BODY:  
White

ACTUATOR:  
White

MATERIALS

BODY:  
Polyamide 6/6 (PA66)

ACTUATOR:  
Polyamide 6/6 (PA66)

SPRING:  
Steel (65Mn)

HOOK SPRING:  
Stainless Steel (1Cr13)

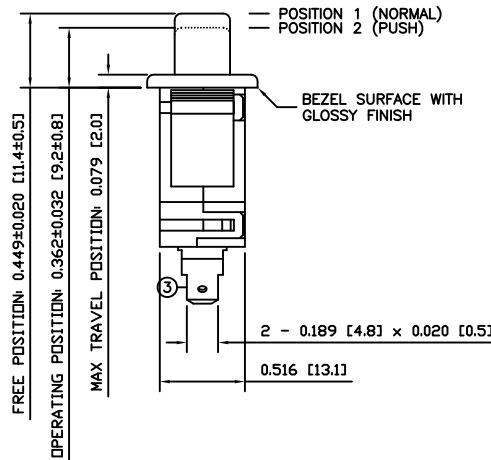
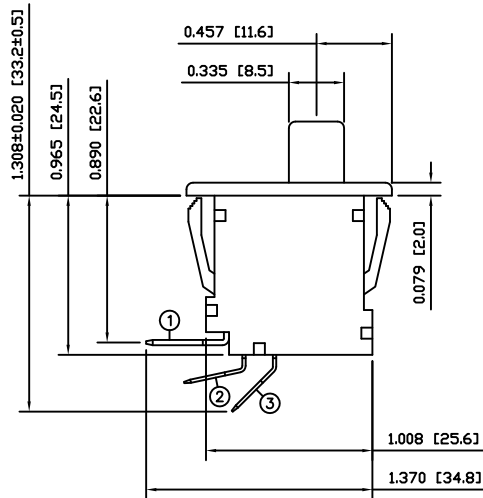
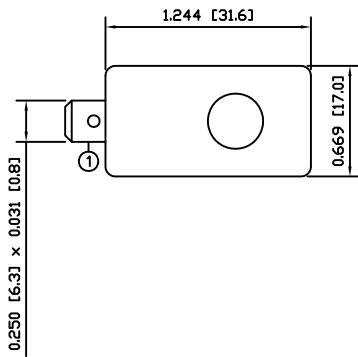
ACTUATION LEVER:  
Brass (H62)

MOBILE CONTACT BAR:  
Bronze (QSn6.5)

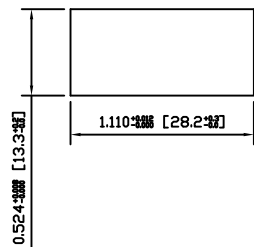
MOBILE CONTACT:  
Silver/Nickel (AgNi(10))

STATIONARY CONTACT:  
Silver/Nickel Clad Copper (AgNi(10)/Cu)

TERMINALS:  
Silver Plated Brass (H62)



SUGGESTED PANEL CUTOUT



ACTUATOR	B	10/03/16	CAB
BODY	B	10/03/24	CAB
COLORS	A	09/10/23	CAB
MATERIALS	B	10/03/16	CAB
SPECIFICATIONS	C	10/03/16	CAB
REFERENCE	REV.	DATE	BY

THE INFORMATION CONTAINED IN THIS DOCUMENT IS PROPRIETARY TO E-SWITCH AND IS NOT TO BE COPIED OR TRANSFERRED

C	CORRECTED DIMENSIONS	19001	10/03/24	CAB
B	CORRECTED SPECIFICATIONS	PCRD0243	09/12/14	CAB
A	INITIAL RELEASE	PCRD0120	09/10/23	CAB
REV.	DESCRIPTION	PCR	DATE	DRAWN BY

DIMENSIONS	
INCHES [MILLIMETERS]	
GENERAL TOLERANCES	
±0.008 [±0.2] / ±1'	
SCALE	PROJECTION
DRAWING NOT TO SCALE	1st Angle

PP1-FB7-2D2			
ITEM NUMBER	DATE	REVISION	
34-PP1FB72D2	MARCH 24, 2010	C	