

### DAISY-MINI-WW

~65° wide beam

#### TECHNICAL SPECIFICATIONS:

Dimensions	mm
Height	0 mm
Fastening	pin, screw, snaps
ROHS compliant	yes ⓘ

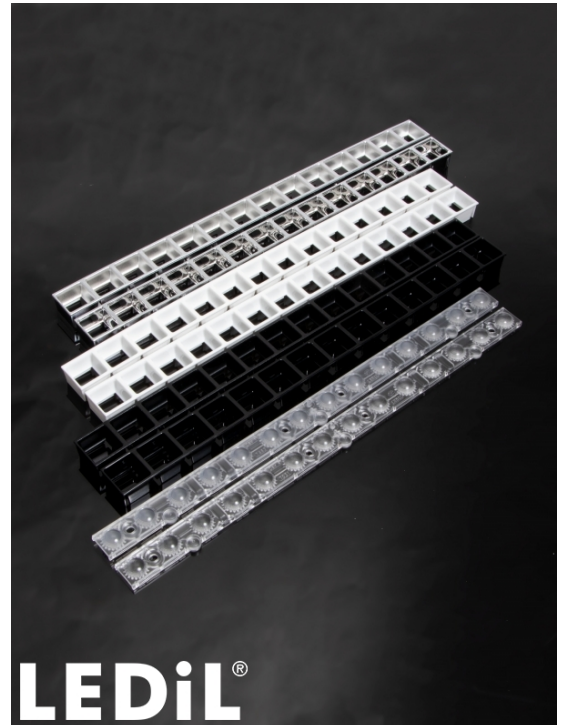
#### MATERIAL SPECIFICATIONS:

Component	Type	Material	Colour	Finish
F17031_DAISY-MINI-WW	Linear lens	PMMA	clear	
F17028_DAISY-MINI-SHD	Shade	PC	black	gloss
F17033_DAISY-MINI-SHD-WHT	Shade	PC	white	gloss
F17034_DAISY-MINI-SHD-MATT	Shade	PC	black	matt
F17465_DAISY-MINI-SHD-WHT-MATT	Shade	PC	white	matt
F17666_DAISY-MINI-SHD-MET	Shade	PC	metal	gloss
F17667_DAISY-MINI-SHD-MET-MATT	Shade	PC	metal	matt

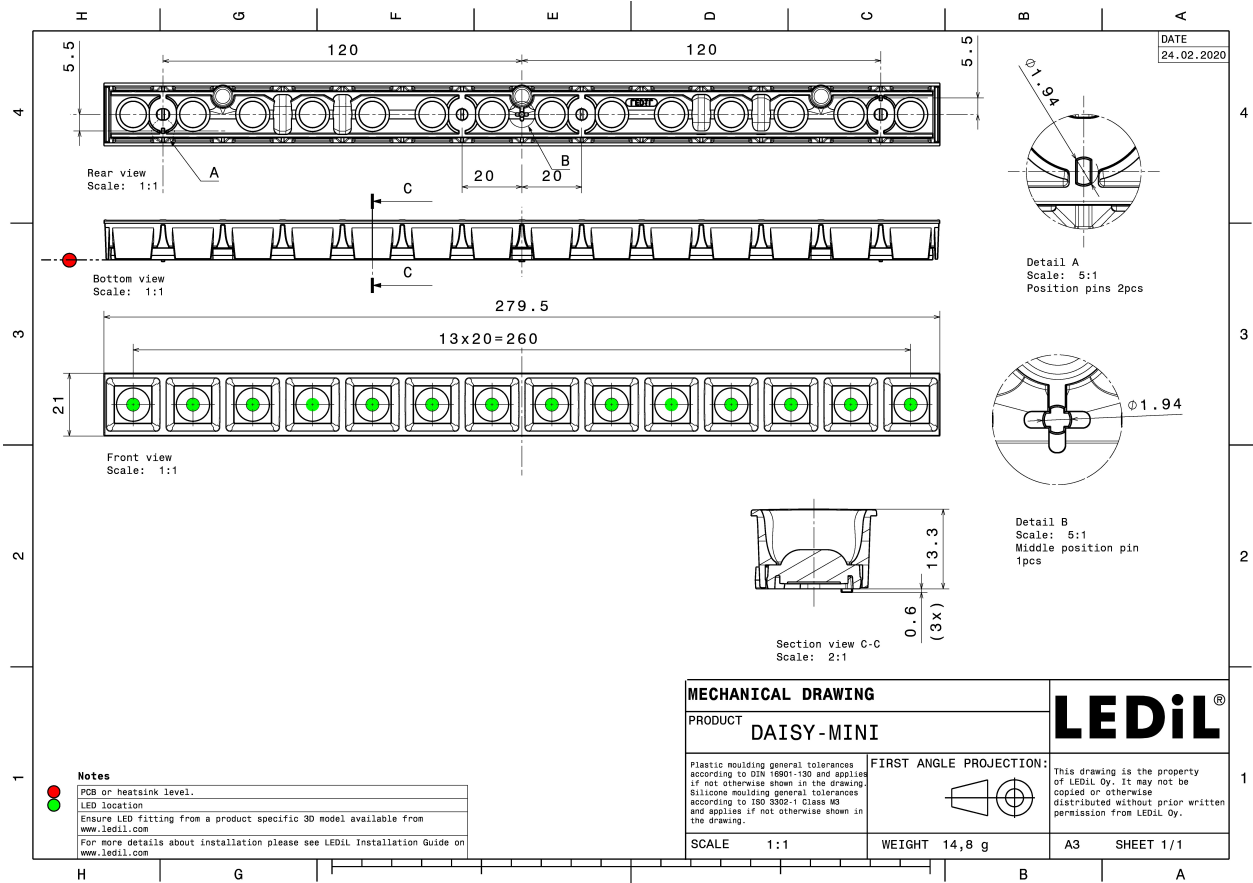
#### ORDERING INFORMATION:

##### Quantities for one set:

Linear lens	1
Shade	1



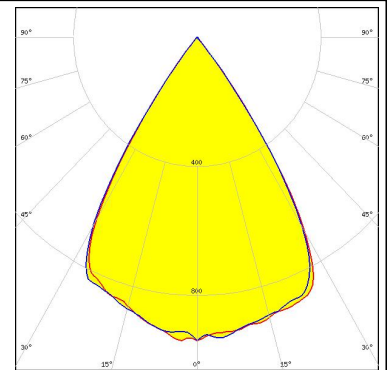
Component		Qty in box	MOQ	MPQ	Box weight (kg)
F17031_DAISY-MINI-WW	Linear lens	252	252	12	
» Box size: 398 x 298 x 265 mm					
F17028_DAISY-MINI-SHD	Shade	252	252	4	5.9
» Box size: 398 x 298 x 265 mm					
F17465_DAISY-MINI-SHD-WHT-MATT	Shade	252	252	4	6.2
» Box size: 398 x 298 x 265 mm					
F17666_DAISY-MINI-SHD-MET	Shade	252	252	4	
» Box size: 398 x 298 x 265 mm					
F17033_DAISY-MINI-SHD-WHT	Shade	252	252	4	5.9
» Box size: 398 x 298 x 265 mm					
F17667_DAISY-MINI-SHD-MET-MATT	Shade	252	252	4	
» Box size: 398 x 298 x 265 mm					
F17034_DAISY-MINI-SHD-MATT	Shade	252	252	4	6.1
» Box size: 398 x 298 x 265 mm					



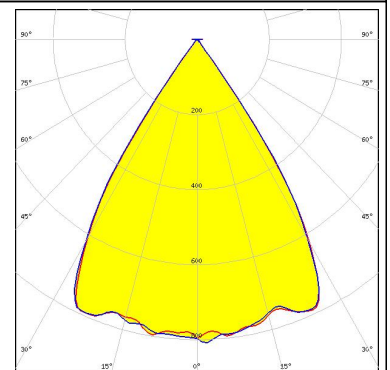
### PHOTOMETRIC DATA (SIMULATED):



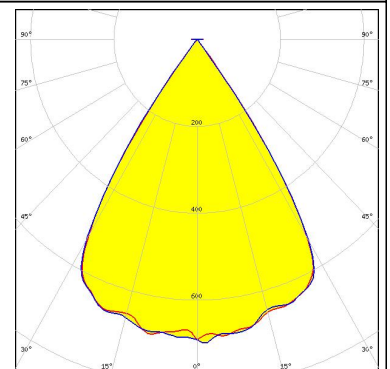
LED J Series 3030  
 FWHM 65.9 + °  
 Efficiency 83 %  
 Peak intensity 1 cd/lm  
 LEDs/each optic 1  
 Light colour White  
 Required components:  
 F17028\_DAISY-MINI-SHD



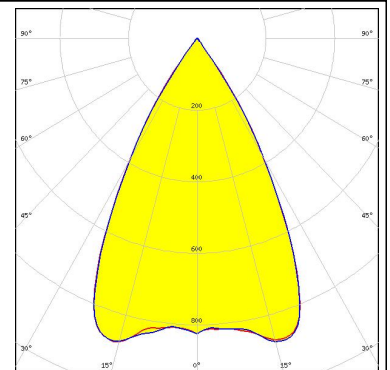
LED XQ-E HI  
 FWHM 68.0°  
 Efficiency 89 %  
 Peak intensity 0.8 cd/lm  
 LEDs/each optic 1  
 Light colour White  
 Required components:  
 F17666\_DAISY-MINI-SHD-MET



LED XQ-E HI  
 FWHM 66.0°  
 Efficiency 76 %  
 Peak intensity 0.7 cd/lm  
 LEDs/each optic 1  
 Light colour White  
 Required components:  
 F17034\_DAISY-MINI-SHD-MATT



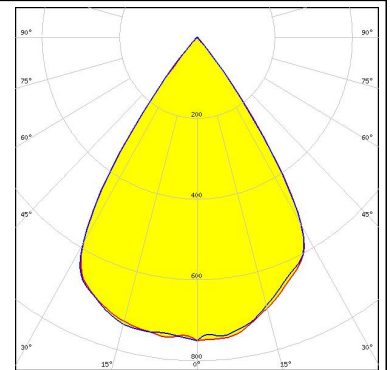
LED NFSWE11A  
 FWHM 58.0°  
 Efficiency 77 %  
 Peak intensity 0.9 cd/lm  
 LEDs/each optic 4  
 Light colour White  
 Required components:  
 F17028\_DAISY-MINI-SHD



### PHOTOMETRIC DATA (SIMULATED):

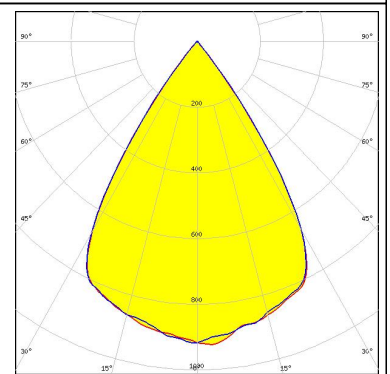
#### OSRAM Opto Semiconductors

LED Duris S5 (2 chip)  
FWHM 67.8 + °  
Efficiency 84 %  
Peak intensity 0.8 cd/lm  
LEDs/each optic 1  
Light colour White  
Required components:  
F17028\_DAISY-MINI-SHD



#### SAMSUNG

LED LM28xB Series  
FWHM 66.7 + °  
Efficiency 84 %  
Peak intensity 0.9 cd/lm  
LEDs/each optic 1  
Light colour White  
Required components:  
F17028\_DAISY-MINI-SHD



### GENERAL INFORMATION:

NOTE: The typical beam angle will be changed by different color, chip size and chip position tolerance. The typical total beam angle is the full angle measured where the luminous intensity is half of the peak value.

### MATERIALS:

As part of our continuous research and improvement processes, and to ensure the best possible quality and availability of our products, LEDiL reserves the right to change material grades without notice.

### PRODUCT DATA USER AGREEMENT AND DISCLAIMER:

The measured data in the provided downloadable LEDiL Product Datasheets and Mechanical 2D-Drawings is rounded and provided as reference for planning. LEDiL Oy's optical specifications have been verified by conducting performance testing of the products in accordance with the company's quality system. The reported data are averaged results of multiple measurements with typical variation. LEDiL Oy reserves the right to without prior notification make changes and improvements to its products.

LEDiL Oy assumes neither warranty, nor guarantee nor any other liability of any kind for the contents and correctness of the provided data. The provided data has been generated with highest diligence but the provided data may in reality not represent the complete possible variation range of all intrinsic parameters. Therefore, in certain cases a deviation from the provided data could occur.

LEDiL Oy reserves the right to undertake technical changes of its products without further notification which could lead to changes in the provided data. LEDiL Oy assumes no liability of any kind for the possible deviation from any provided data or any other damage resulting from the usage of the provided data.

The user agrees to this disclaimer and user agreement with the download or usage of the provided files.

#### LEDiL Oy

Joensuunkatu 13  
FI-24240 SALO  
Finland

#### LEDiL Inc.

228 West Page Street  
Suite D  
Sycamore IL 60178  
USA

#### Local sales and technical support

[www.ledil.com/  
where\\_to\\_buy](http://www.ledil.com/where_to_buy)

#### Shipping locations

Salo, Finland  
Hong Kong, China

#### Distribution Partners

[www.ledil.com/  
where\\_to\\_buy](http://www.ledil.com/where_to_buy)