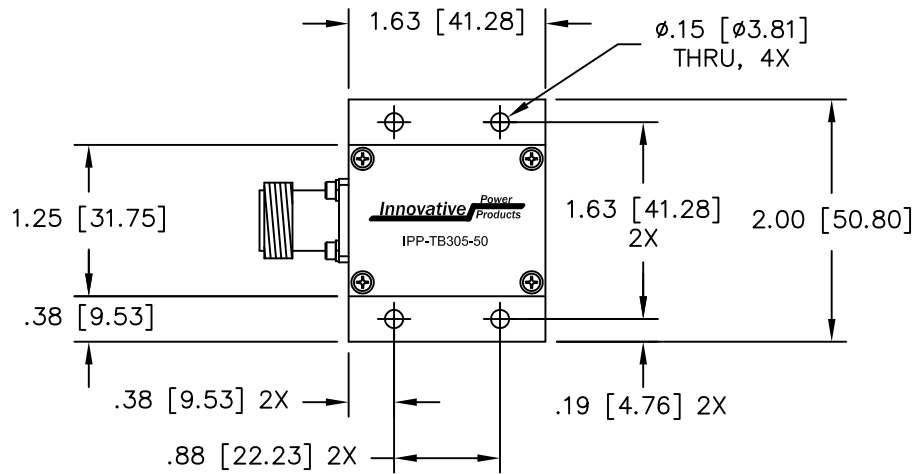
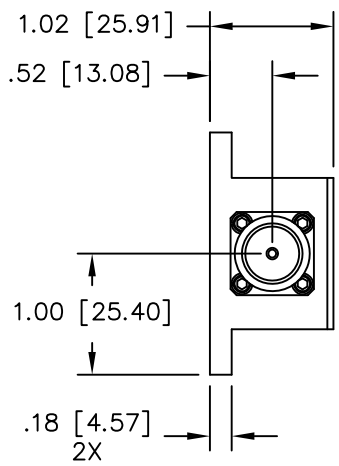


UNAUTHORIZED USE OF THIS
DRAWING IS STRICTLY PROHIBITED

DAR	REV	DESCRIPTION	APPVD	DATE
1782	A	INITIAL RELEASE	DG	3-09
2389	B	SEE DAR	DG	5-10
2928	C	SEE DAR	DG	2-11
3477	D	SEE DAR	DG	2-12



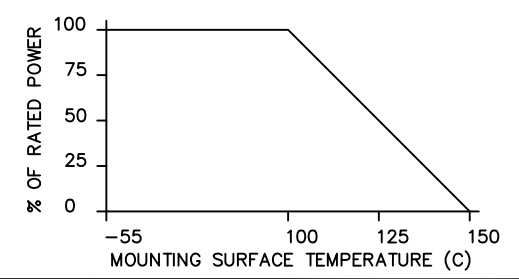
NOTES

- CONNECTOR TYPE "N" FEMALE
- RoHS COMPLIANT.

ELECTRICAL SPECIFICATIONS

INPUT POWER: 300 WATT
 FREQ: DC - 3GHz.
 VSWR: <1.30:1
 TEMPERATURE: -55°C TO 100°C

POWER DERATING CURVE



PART NO.	VALUE	TOLERANCE
IPP-TB305-50	50 OHMS	+/- 5%

MATERIAL AL. ALLOY 6061-T651	DWN DG	DATE 2-09		
	ENG TJD	DATE 2-09		
FINISH CHEM FILM CLEAR PER MIL-DTL-5541, TYPE 2, REV F, CLASS 3, ROHS COMPLIANT	MANUF RR	DATE 2-09	TITLE TERMINATION, 300 WATT, CONNECTORIZED	
	TOLERANCE .XX ±.02 .XXX ±.010 ANG. ±1/2°		CAGE CODE: 437R2	SIZE B
SHEET OF 1 1		SCALE 1:1	REV. D	