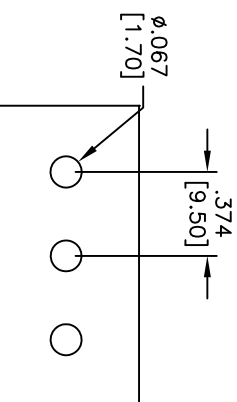
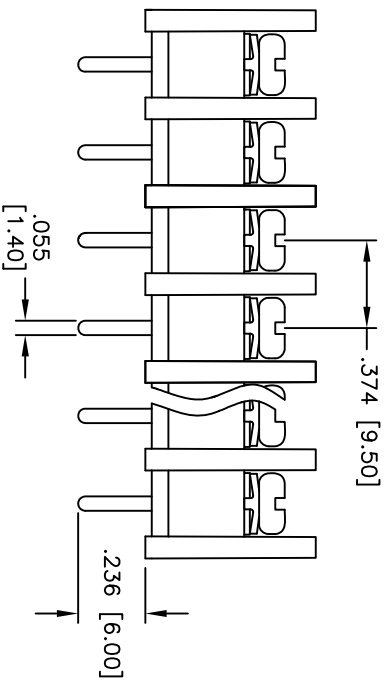
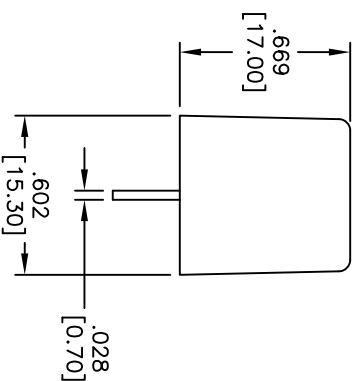
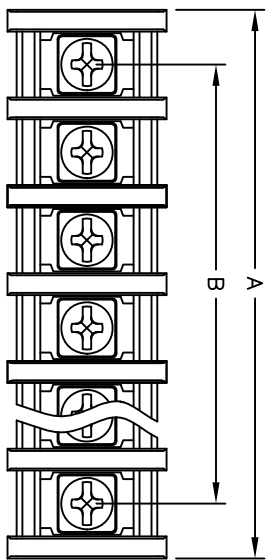


Rev	AWO #	Description	Date	Appr
-		RELEASED	5/17/10	

APPROVED: _____
 DATE: _____ TITLE: _____



RECOMMENDED PCB LAYOUT

Positions: 2 thru 30
 A = .374 [9.50] x No. of Spaces + .472 [12.00]
 B = .374 [9.50] x No. of Spaces

SPECIFICATIONS:

- Material: Insulator: PA66, rated UL 94V-2
- Insulator color: Black
- Screw: M4, Steel, Nickel plated
- Contact: Brass, Tin plated
- Electrical: Operating voltage: 300 VAC
- Current rating: 20 Amps
- Contact resistance: 20 mohms
- Insulation resistance: 500 Mohms/500V
- Dielectric withstanding voltage: 2,000V/Min
- Mechanical: Wire range: 22 - 12 AWG
- Temperature Rating: Operating temperature: -40°C to +130°C
- Environmental: Lead free, RoHS compliant
- Recommended soldering temp: 235°C for 5 seconds



UNLESS OTHERWISE SPECIFIED ALL DIMENSIONS ARE INCHES [MM]			
.X	± .10	ØX	± .10
.XX	± .020	ØXXX	± .015
.XXX	± .015	ØXXXX	± .010
APPROVALS	DATE		
DRAWN	DY	5/17/10	
CHECKED			
APPROVED			

ADAM TECH
 909 Railway Avenue, Union, NJ 07083
 Phone: 908-687-5000 Fax: 908-687-5710

TITLE: 374 [9.50] CENTERLINE BARRIER BLOCK,
 PCB TAILS, BARRIER ENDS

SIZE	PART NO.	TBF-XX-01-B-SS	REV.	
CHECKED				
APPROVED				
REF: 300046C	SCALE: NTS	SHEET 1 OF 1		