

Customer Information Sheet

DRAWING No.: H2071ZS1

SHEET 2 OF 2

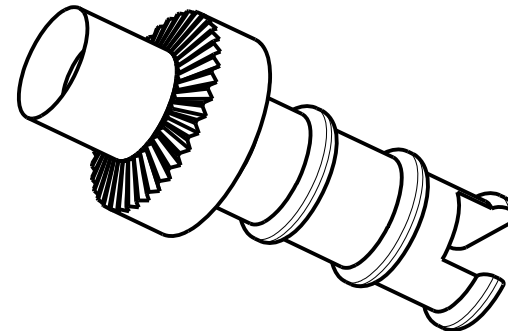
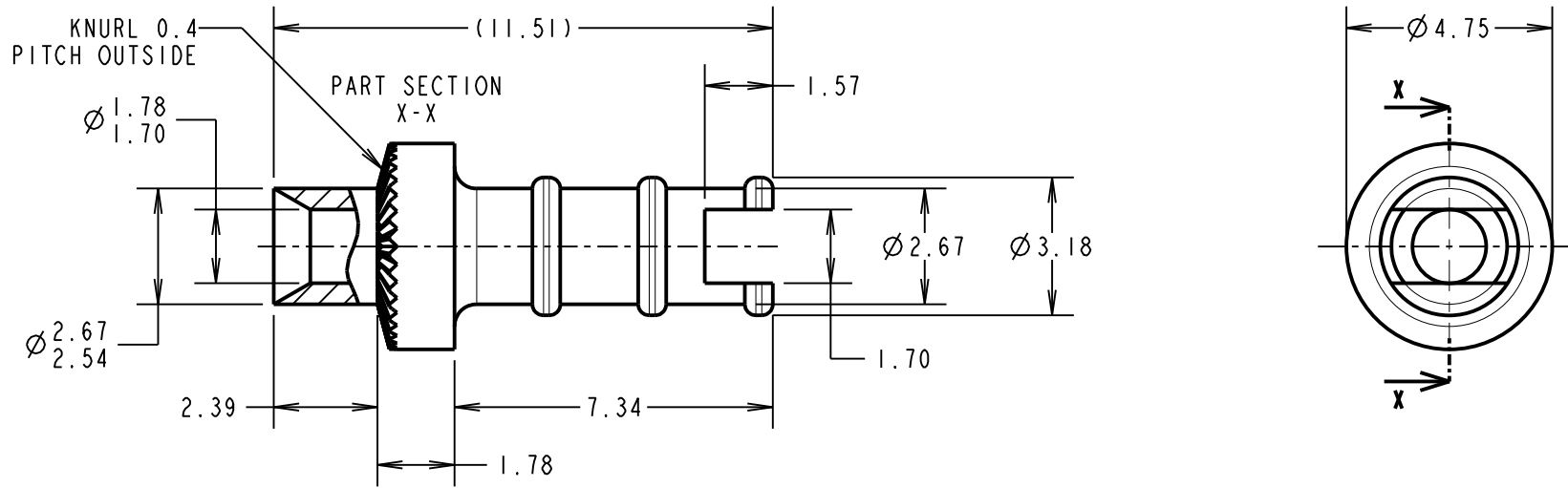
IF IN DOUBT - ASK

©

NOT TO SCALE

THIRD ANGLE PROJECTION

ALL DIMENSIONS IN mm



NOTES:

1. UNLESS OTHERWISE STATED, TOLERANCES = ± 0.13 .
2. RECOMMENDED HOLE SIZE = $\varnothing 2.68/2.78$ mm.
3. FOR USE WITH BOARD THICKNESS 1.60mm.
4. USE PUNCH AND DIE TOOL PART NUMBER Z2071Z00.

FM	16	24.04.18	21243
NAME	ISS.	DATE	C/NOTE
APPROVED:		F. MCGOWAN	
CHECKED:		S. BENNETT	
DRAWN:		JM BROOKES	
CUSTOMER REF.:			
ASSEMBLY DRG:			

HARWIN

www.harwin.com
technical@harwin.com

THIS DRAWING AND ANY INFORMATION OR DESCRIPTIVE MATTER SET OUT HEREON ARE CONFIDENTIAL AND COPYRIGHT PROPERTY OF THE HARWIN GROUP AND MUST NOT BE DISCLOSED, LOANED, COPIED OR USED FOR MANUFACTURING, TENDERING OR FOR ANY OTHER PURPOSE WITHOUT THEIR WRITTEN PERMISSION.

TOLERANCES	
X	= ± 1 mm
X.X	= ± 0.50 mm
X.XX	= ± 0.10 mm
X.XXX	= ± 0.01 mm
ANGLES = $\pm 5^\circ$	
UNLESS STATED	

MATERIAL:	
ANNEALED BRASS CW614N M TO BS EN 12164	
FINISH: 100% TIN OVER NICKEL	
S/AREA:	mm ²

TITLE:	
TERMINAL LUG	
DRAWING NUMBER:	
H2071ZS1	
SHT	2 OF 2