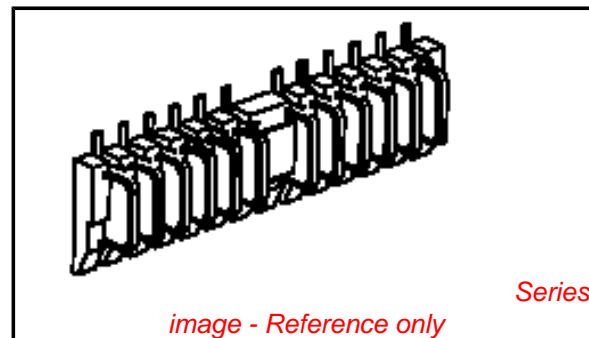


**PLEASE CHECK WWW.MOLEX.COM FOR LATEST PART INFORMATION**

**Part Number:** [0876021191](#)  
**Status:** **Active**  
**Description:** 2.50mm(.098") Pitch Panel Detachable Connector, PCB Header, Vertical, 12 Circuits, 0.5µm (20µ") Gold (Au) Selective Plating, with Locating Pegs, Tube Packaging, Lead-free

**Documents:**

[Drawing \(PDF\)](#) [RoHS Certificate of Compliance \(PDF\)](#)  
[Product Specification PS-87601-001 \(PDF\)](#)



**General**

|                |                       |
|----------------|-----------------------|
| Product Family | PCB Headers           |
| Series         | <a href="#">87602</a> |
| Application    | Board-to-Board        |
| Comments       | Panel Detachable      |
| Product Name   | N/A                   |

**Physical**

|                                |                |
|--------------------------------|----------------|
| Breakaway                      | No             |
| Circuits (Loaded)              | 12             |
| Circuits (maximum)             | 12             |
| Durability (mating cycles max) | 10,000         |
| First Mate / Last Break        | No             |
| Glow-Wire Compliant            | No             |
| Guide to Mating Part           | No             |
| Keying to Mating Part          | None           |
| Lock to Mating Part            | None           |
| Mated Height (in)              | 0.594 In       |
| Mated Height (mm)              | 15.09 mm       |
| Material - Plating Mating      | Gold           |
| Material - Plating Termination | Tin            |
| Number of Rows                 | 1              |
| Orientation                    | Vertical       |
| PCB Retention                  | None           |
| PCB Thickness Recommended (in) | 0.062 In       |
| PCB Thickness Recommended (mm) | 1.60 mm        |
| Packaging Type                 | Tube           |
| Pitch - Mating Interface (in)  | 0.098 In       |
| Pitch - Mating Interface (mm)  | 2.50 mm        |
| Polarized to Mating Part       | Yes            |
| Polarized to PCB               | Yes            |
| Shrouded                       | No             |
| Stackable                      | No             |
| Temperature Range - Operating  | -40°C to +85°C |
| Termination Interface: Style   | Surface Mount  |

**Electrical**

|                               |      |
|-------------------------------|------|
| Current - Maximum per Contact | 1A   |
| Voltage - Maximum             | 125V |

**Material Info**

**Reference - Drawing Numbers**

|                       |              |
|-----------------------|--------------|
| Product Specification | PS-87601-001 |
| Sales Drawing         | SD-87602-011 |

**EU RoHS**

**ELV and RoHS Compliant**  
**REACH SVHC**  
**Contains SVHC: No**  
**Halogen-Free**  
**Status**  
**Not Reviewed**

**China RoHS**



**Need more information on product environmental compliance?**

Email [productcompliance@molex.com](mailto:productcompliance@molex.com)  
 For a multiple part number RoHS Certificate of Compliance, [click here](#)

Please visit the [Contact Us](#) section for any non-product compliance questions.

**Search Parts in this Series**

[87602Series](#)

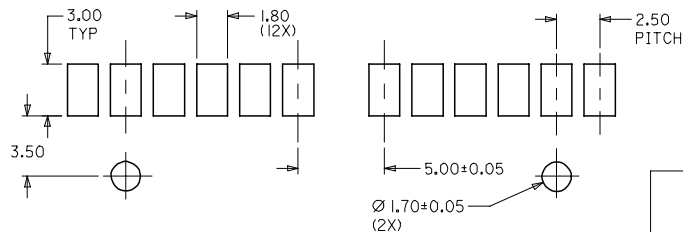
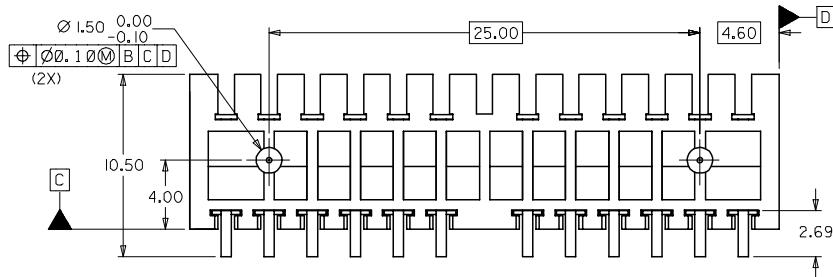
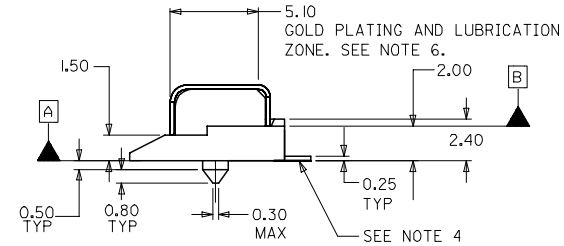
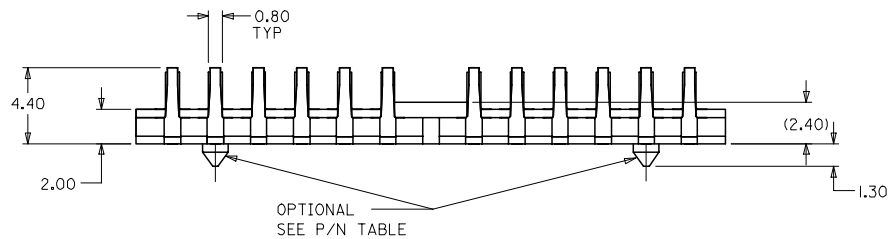
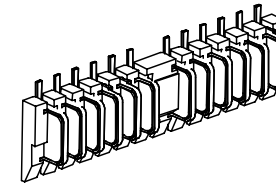
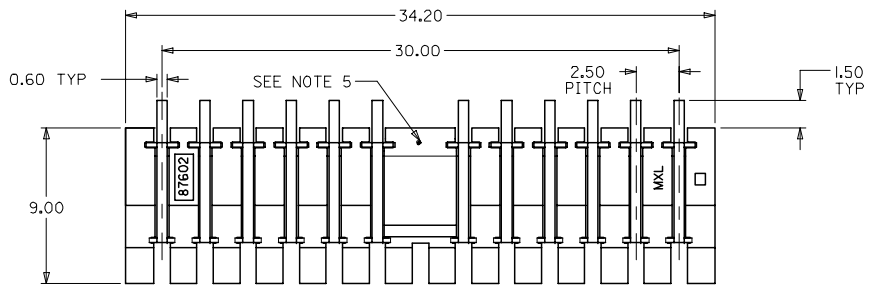
**Mates With**

[87601 PCB Receptacle](#)

This document was generated on 04/19/2010

**PLEASE CHECK [WWW.MOLEX.COM](http://WWW.MOLEX.COM) FOR LATEST PART INFORMATION**

LEAD-FREE



RECOMMENDED PCB LAYOUT  
PCB THICKNESS = 1.60 ± 0.20 MM

NOTES:

- MATERIALS : HOUSING - NYLON, GLASS-FILLED, UL 94V-0 OR EQUIVALENT, COLOUR : BLACK  
TERMINAL - COPPER ALLOY  
COVER - NYLON, GLASS-FILLED, UL 94V-0, COLOUR : NATURAL
- FINISHES : SELECTIVE GOLD (Au) IN THE CONTACT AREA:  
THICKNESS=0.5 MICROMETER MINIMUM;  
SELECTIVE TIN (Sn) ALLOY IN THE PC TAIL AREA:  
THICKNESS= 5.0 MICROMETER MINIMUM;  
NICKEL (Ni) OVERALL
- PRODUCT SPECIFICATIONS : PS-87601-010
- COPLANARITY OF THE SOLDER TAILS TO BE CONTROLLED AT 0.15 MAX WITH REFERENCE TO DATUM A.  
COPLANARITY OF SOLDER TAILS IS MEASURED BY RESTING THE PART ON A FLAT GAUGE SURFACE.
- MARKING FOR LUBRICATED PARTS.
- 3 LAYERS OF LUBRICANT TO BE APPLIED.
- RETENTION FORCE BETWEEN COVER AND CONNECTOR TO BE 350 gF MIN.
- CONTACT FACTORY ON DETAILS OF THIS PART NO.

|          |                   |            |             |
|----------|-------------------|------------|-------------|
| EWR #973 | EC NO: S2006-0871 | 2006/02/24 | DESCRIPTION |
|          | DRWN:CGOH         | 2006/02/24 |             |
|          | CHKD:BLHW         | 2006/02/24 |             |
|          | APPR:PTLIM        | 2006/02/24 |             |
| A1       | REV               |            |             |

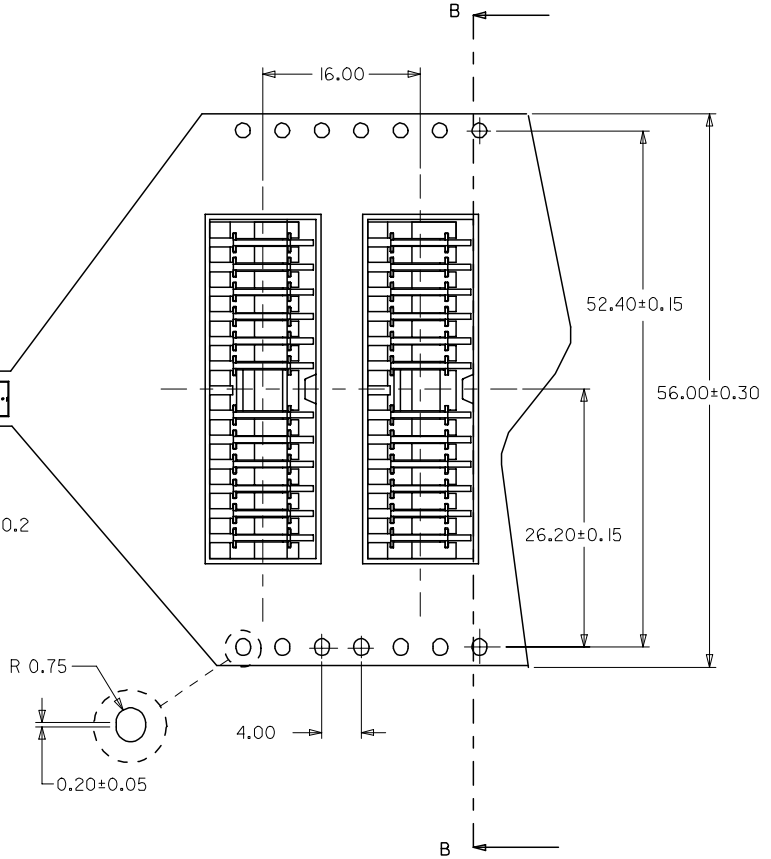
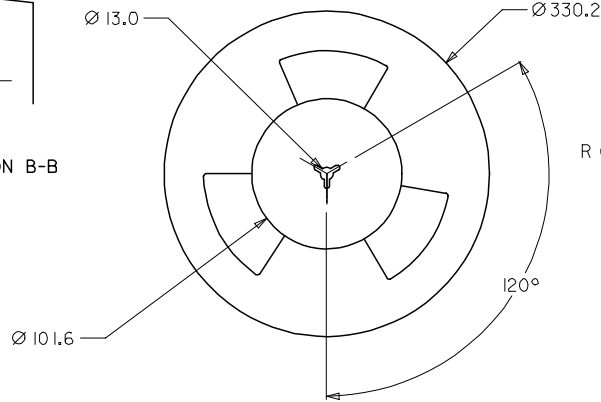
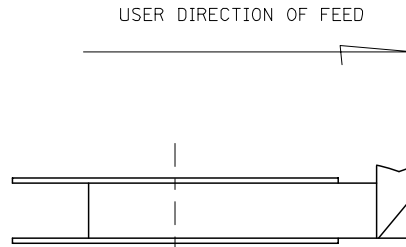
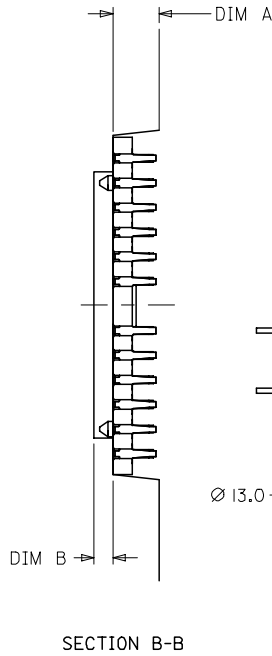
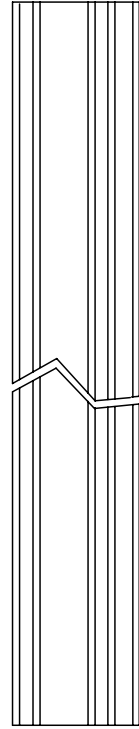
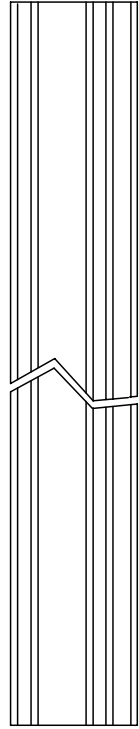
|                 |     |
|-----------------|-----|
| QUALITY SYMBOLS | ▽=0 |
|                 | ▽=0 |

| GENERAL TOLERANCES (UNLESS SPECIFIED)                |       |
|------------------------------------------------------|-------|
| mm                                                   | INCH  |
| 4 PLACES ± ---                                       | ± --- |
| 3 PLACES ± ---                                       | ± --- |
| 2 PLACES ± 0.20                                      | ± --- |
| 1 PLACE ± ---                                        | ± --- |
| ANGULAR ± 5 °                                        |       |
| DRAFT WHERE APPLICABLE MUST REMAIN WITHIN DIMENSIONS |       |

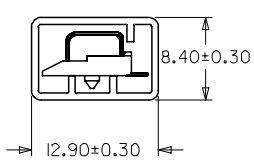
| DIMENSION STYLE MM ONLY |            |
|-------------------------|------------|
| DRAWN BY                | DATE       |
| ATSEE                   | 2004/06/07 |
| CHECKED BY              | DATE       |
| SHONG                   | 2004/06/15 |
| APPROVED BY             | DATE       |
| KCLING                  | 2004/06/15 |
| MATERIAL NO.            | SEE TABLE  |
| SIZE                    | A3         |

|                                                                                                                               |              |                        |
|-------------------------------------------------------------------------------------------------------------------------------|--------------|------------------------|
| SCALE                                                                                                                         | DESIGN UNITS | THIRD ANGLE PROJECTION |
| NTS                                                                                                                           | METRIC       |                        |
| TITLE                                                                                                                         |              |                        |
| 2.50MM PITCH, 12 CKTS<br>DETACHABLE CONN. ( HDR )                                                                             |              |                        |
| MOLEX MOLEX INCORPORATED                                                                                                      |              |                        |
| MATERIAL NO.                                                                                                                  | DOCUMENT NO. | SHEET NO.              |
| SEE TABLE                                                                                                                     | SD-87602-011 | 1 OF 3                 |
| THIS DRAWING CONTAINS INFORMATION THAT IS PROPRIETARY TO MOLEX INCORPORATED AND SHOULD NOT BE USED WITHOUT WRITTEN PERMISSION |              |                        |

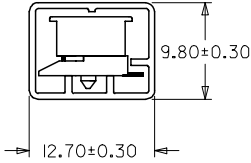
LEAD-FREE



DOUBLE SPROCKET HOLE T/REEL ( PER EIA STANDARD )  
ONLY PART NO : 87602-1101 SHOWN



PART NO : 87602-1191



PART NO : 87602-1291

|          |                   |             |
|----------|-------------------|-------------|
| EWR #973 | EC NO: S2006-0871 | 2006/02/24  |
|          | DRWN:CGOH         | 2006/02/24  |
|          | CHKD:BLW          | 2006/02/24  |
|          | APPR:PTLIM        | 2006/02/24  |
| A1       | REV               | DESCRIPTION |

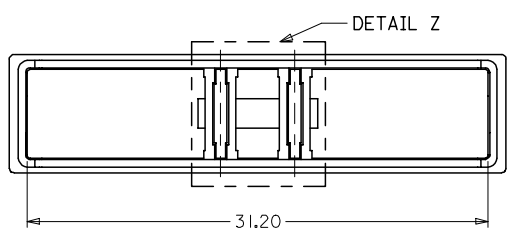
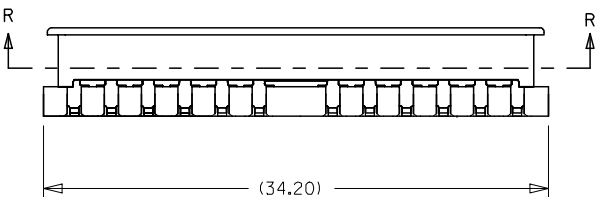
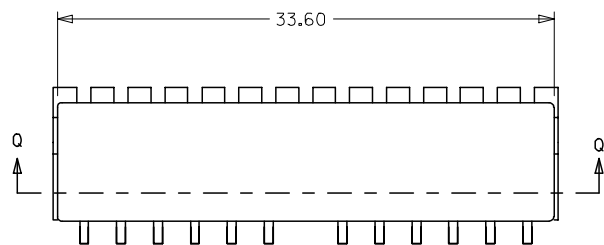
|                 |     |
|-----------------|-----|
| QUALITY SYMBOLS | ▽=0 |
|                 | ∇=0 |

| GENERAL TOLERANCES (UNLESS SPECIFIED)                |       |       |
|------------------------------------------------------|-------|-------|
|                                                      | mm    | INCH  |
| 4 PLACES                                             | ± --- | ± --- |
| 3 PLACES                                             | ± --- | ± --- |
| 2 PLACES                                             | ± 0.2 | ± --- |
| 1 PLACE                                              | ± --- | ± --- |
| ANGULAR ± 5 °                                        |       |       |
| DRAFT WHERE APPLICABLE MUST REMAIN WITHIN DIMENSIONS |       |       |

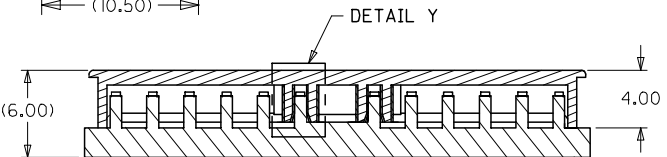
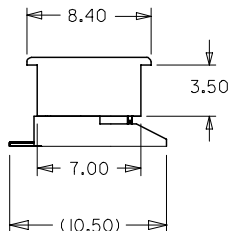
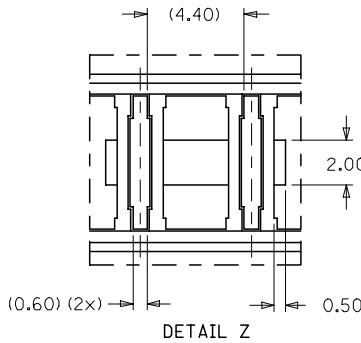
| DIMENSION STYLE |              | SCALE                                                                                                                         | DESIGN UNITS | THIRD ANGLE PROJECTION |
|-----------------|--------------|-------------------------------------------------------------------------------------------------------------------------------|--------------|------------------------|
| MM ONLY         |              | NTS                                                                                                                           | METRIC       |                        |
| DRAWN BY        | DATE         | TITLE                                                                                                                         |              |                        |
| ATSEE           | 2004/06/07   | 2.50MM PITCH, 12 CKTS DETACHABLE CONN.( HDR )                                                                                 |              |                        |
| CHECKED BY      | DATE         | MOLEX INCORPORATED                                                                                                            |              |                        |
| SHONG           | 2004/06/15   | SD-87602-011                                                                                                                  |              |                        |
| APPROVED BY     | DATE         | SHEET NO.                                                                                                                     |              |                        |
| KCLING          | 2004/06/15   | 2 OF 3                                                                                                                        |              |                        |
| MATERIAL NO.    | DOCUMENT NO. | THIS DRAWING CONTAINS INFORMATION THAT IS PROPRIETARY TO MOLEX INCORPORATED AND SHOULD NOT BE USED WITHOUT WRITTEN PERMISSION |              |                        |
| SEE TABLE       | SD-87602-011 |                                                                                                                               |              |                        |

LEAD-FREE

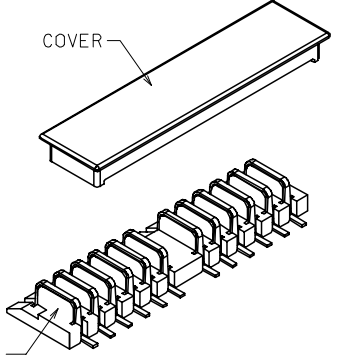
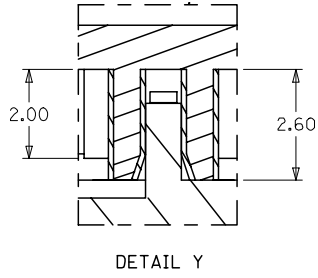
| LUBRICATION AT CONTACT | PLASTIC PEG | MOLEX P/N WITHOUT CAP IN EMBOSSED TAPE PACKAGING |       |       | MOLEX P/N WITH CAP IN EMBOSSED TAPE PACKAGING |       |       | MOLEX P/N WITHOUT CAP IN TUBE PACKAGING | MOLEX P/N WITH CAP IN TUBE PACKAGING |
|------------------------|-------------|--------------------------------------------------|-------|-------|-----------------------------------------------|-------|-------|-----------------------------------------|--------------------------------------|
|                        |             |                                                  | DIM A | DIM B |                                               | DIM A | DIM B |                                         |                                      |
| NO                     | NO          | 87602-1001                                       | 4.70  | 1.90  | SEE NOTE 8                                    | N/A   | N/A   | 87602-1091                              | SEE NOTE 8                           |
| YES                    | NO          | 87602-1002                                       | 4.70  | 1.90  | SEE NOTE 8                                    | N/A   | N/A   | 87602-1092                              | SEE NOTE 8                           |
| NO                     | YES         | 87602-1101                                       | 4.70  | 1.90  | 87602-1201                                    | 6.80  | 1.60  | 87602-1191                              | 87602-1291                           |
| YES                    | YES         | 87602-1102                                       | 4.70  | 1.90  | 87602-1202                                    | 6.80  | 1.60  | 87602-1192                              | 87602-1292                           |



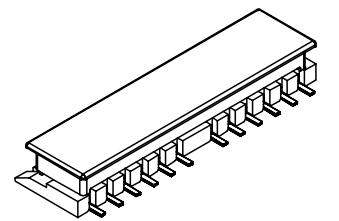
SECTION R-R (COVER ONLY)



SECTION Q-Q



P/N: 87602-1001  
12 CKTS DETACHABLE CONNECTOR (HEADER)



|                                                                                                                           |                                                                   |                                                                                                                                                                   |                                                                                                                                  |                           |                              |                        |                    |
|---------------------------------------------------------------------------------------------------------------------------|-------------------------------------------------------------------|-------------------------------------------------------------------------------------------------------------------------------------------------------------------|----------------------------------------------------------------------------------------------------------------------------------|---------------------------|------------------------------|------------------------|--------------------|
| <b>EWR #973</b><br>EC NO: S2006-0871<br>DRWN: CGOH<br>CHKD: BLOW<br>APPR: PTLIM<br>2006/02/24<br>2006/02/24<br>2006/02/24 | QUALITY SYMBOLS<br>▽=0<br>▽=0                                     | GENERAL TOLERANCES (UNLESS SPECIFIED)<br>mm INCH<br>4 PLACES ± --- ± ---<br>3 PLACES ± --- ± ---<br>2 PLACES ± 0.20 ± ---<br>1 PLACE ± --- ± ---<br>ANGULAR ± 5 ° | DIMENSION STYLE<br>MM ONLY                                                                                                       | SCALE<br>NTS              | DESIGN UNITS<br>METRIC       | THIRD ANGLE PROJECTION |                    |
|                                                                                                                           | DRAWN BY<br>ATSEE<br>CHECKED BY<br>SHONG<br>APPROVED BY<br>KCLING | DATE<br>2004/06/08<br>DATE<br>2004/06/15<br>DATE<br>2004/06/15                                                                                                    | TITLE<br>2.50MM PITCH, 12 CKTS<br>DETACHABLE CONN. (HDR)                                                                         | MATERIAL NO.<br>SEE TABLE | DOCUMENT NO.<br>SD-87602-011 | SHEET NO.<br>3 OF 3    | MOLEX INCORPORATED |
|                                                                                                                           | DRAFT WHERE APPLICABLE<br>MUST REMAIN<br>WITHIN DIMENSIONS        | SIZE<br>A3                                                                                                                                                        | THIS DRAWING CONTAINS INFORMATION THAT IS PROPRIETARY TO MOLEX<br>INCORPORATED AND SHOULD NOT BE USED WITHOUT WRITTEN PERMISSION |                           |                              |                        |                    |
|                                                                                                                           | A1                                                                | REV                                                                                                                                                               |                                                                                                                                  |                           |                              |                        |                    |