

HDC MHP 200 FC**Weidmüller Interface GmbH & Co. KG**

Klingenbergstraße 26

D-32758 Detmold

Germany

www.weidmueller.com

**Flexible**

The four module sizes make for individual plug solutions that save a huge amount of space. The smaller pitch translates into an optimised design too.

General ordering data

Version	Power module
Order No.	2549260000
Type	HDC MHP 200 FC
GTIN (EAN)	4050118558685
Qty.	1 pc(s).

Creation date September 14, 2021 4:11:42 AM CEST

Catalogue status 10.09.2021 / We reserve the right to make technical changes.

HDC MHP 200 FC**Weidmüller Interface GmbH & Co. KG**

Klingenbergstraße 26

D-32758 Detmold

Germany

www.weidmueller.com

Technical data**Dimensions and weights**

Depth	34 mm	Depth (inches)	1.339 inch
Height	59.6 mm	Height (inches)	2.346 inch
Width	21.85 mm	Width (inches)	0.86 inch
Net weight	12 g		

Temperatures

Limit temperature	-40 °C ... 125 °C
-------------------	-------------------

Environmental Product Compliance

REACH SVHC	Potassium perfluorobutane sulfonate 29420-49-3
------------	--

General data

Insulation strength	$10^{12} \Omega$	Material	Polycarbonate, glass fibre reinforced
Number of poles	1	Plugging cycles	≥ 500
Pollution severity	3	Rated current (DIN EN 61984)	200 A
Rated impulse voltage (DIN EN 61984)	8 kV	Rated voltage (DIN EN 61984)	1,000 V
Rated voltage according to UL/CSA	600 V	Required plug-in slots	1.5
Series	ModuPlug	Surge voltage category	III
Type	Female	UL 94 flammability rating	V-0

PE connection data

Connection type PE	Screw connection via module frame
--------------------	-----------------------------------

Version

Conductor cross-section, max.	70 mm ²	Conductor cross-section, min.	25 mm ²
Stripping length, rated connection	19 mm	Type of connection	Crimp connection

Classifications

ETIM 6.0	EC002312	ETIM 7.0	EC002312
ETIM 8.0	EC002312	ECLASS 9.0	27-44-02-92
ECLASS 9.1	27-44-02-18	ECLASS 10.0	27-44-02-92
ECLASS 11.0	27-44-02-92		

Approvals

Approvals



ROHS	Conform
UL File Number Search	E92202

Creation date September 14, 2021 4:11:42 AM CEST

Catalogue status 10.09.2021 / We reserve the right to make technical changes.

Data sheet**HDC MHP 200 FC**

Weidmüller Interface GmbH & Co. KG
Klingenbergstraße 26
D-32758 Detmold
Germany

www.weidmueller.com

Technical data**Downloads**

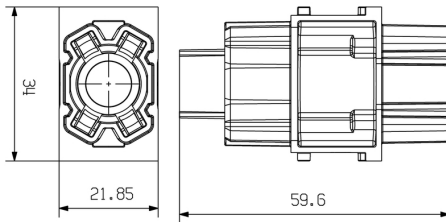
Approval/Certificate/Document of Conformity	Manufacturer's declaration
Engineering Data	STEP
Engineering Data	EPLAN
Catalogues	Catalogues in PDF-format

HDC MHP 200 FC

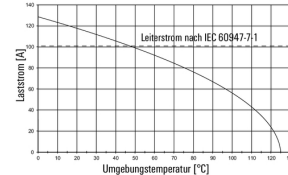
Weidmüller Interface GmbH & Co. KG
 Klingenbergstraße 26
 D-32758 Detmold
 Germany

www.weidmueller.com

Drawings

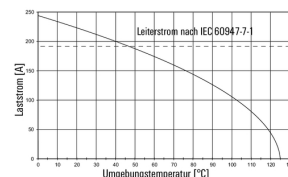


HP 200 mit H07V-K25 / IP65-Gehäuse / 4-polig



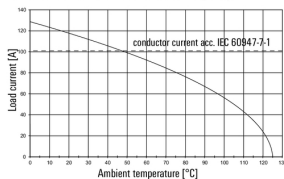
Derating-Kurve für kleinsten Querschnitt 25 mm²

HP 200 / IP65-Gehäuse / 4 Pole



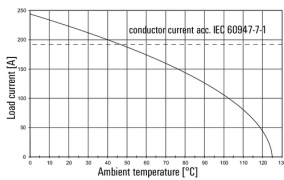
Derating-Kurve für kleinsten Querschnitt 70 mm²

HP 200 with H07V-K25 / IP65 housing / 4 poles



derating curve for smallest cross-section 25 mm²

HP 200 / IP65 housing / 4 poles



derating curve for the largest cross-section 70 mm²