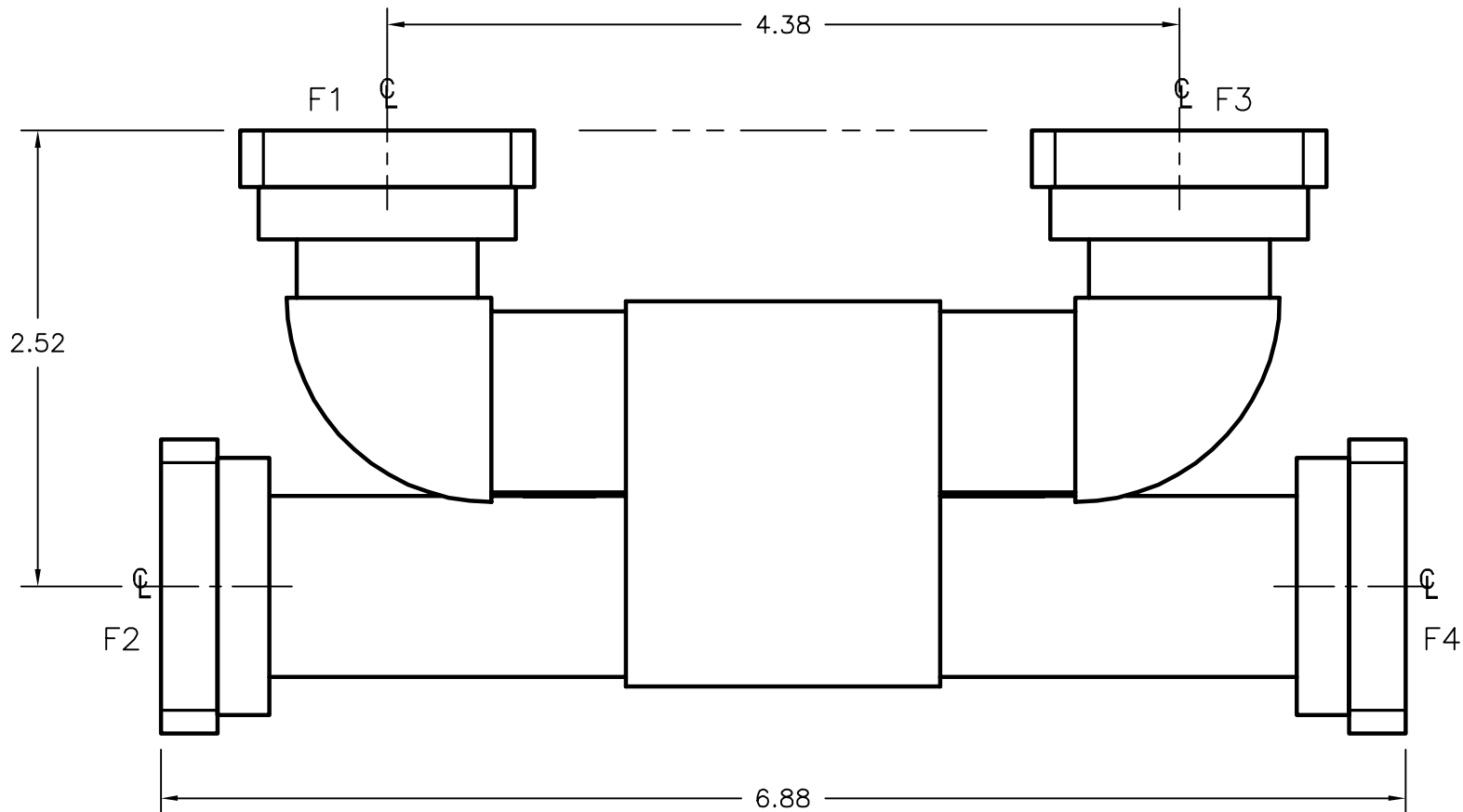


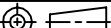

REV A	AUTH JLE	DATE 10/15/02	INITIAL RELEASE
REV B	AUTH RL	DATE 10/26/06	FREQ. NOTES CORRECTED; ILLUSTRATION, FORMAT UPDATED.



FLANGE TYPE
1 = CPRG
2 = CPRF
3 = CMR STANDARD
4 = CMR CLEAR
5 = CMR TAP
6 = UG COVER
7 = UG CHOKE
8 = COVER-GRV.

FREQUENCY	MODEL
8.10-9.30 GHz	90-261X-Z-X-X-X-X
9.10-10.2 GHz	90-262X-Z-X-X-X-X
9.40-10.8 GHz	90-263X-Z-X-X-X-X
10.5-11.9 GHz	90-264X-Z-X-X-X-X

NOTE: REPLACE "F1, F2, F3, & F4" NOTATION WITH NUMBER CORRESPONDING TO FLANGE TYPE DESIRED, AS SHOWN ON TABLE ABOVE.

THIRD ANGLE PROJECTION: 			APPROVALS		DATE				
UNLESS OTHERWISE NOTED, DIMENSIONS ARE IN INCHES, TOLERANCES ARE: FRACTIONS: $\pm 1/64$ ANGLES: $\pm 1/2^\circ$			DRAWN JLE	10/15/02					
			CHKD.						
			APRVD.						
BASIC DIMENSION	DECIMALS 2 PLACE 3 PLACE		 ADVANCED TECHNICAL MATERIALS, INC. TEL: (631) 289-0363 FAX: (631) 289-0358 www.atmmicrowave.com OUTLINE, WR90 'Z'-STYLE COMBINER-DIVIDER (HYBRID-COUP.)						
UNDER 6"	$\pm .02$	$\pm .005$				SIZE A	CAGE CODE 0R8N4	ATM DWG # 5225W	REVISION B
6" - 12"	$\pm .03$	$\pm .010$				SCALE 1 : 1	MODEL # SEE NOTES		SHEET 1/1
OVER 12"	$\pm .06$	$\pm .015$	MATERIAL PER ORDER			THE INFORMATION IN THIS DRAWING IS PROPRIETARY AND SHALL NOT BE USED OR DISCLOSED WITHOUT THE PRIOR WRITTEN CONSENT OF ATM INC. DO NOT SCALE DWGS.			
TREATMENT -			FINISH ATM STD. GRAY						