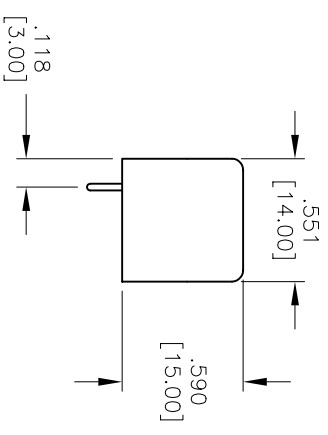
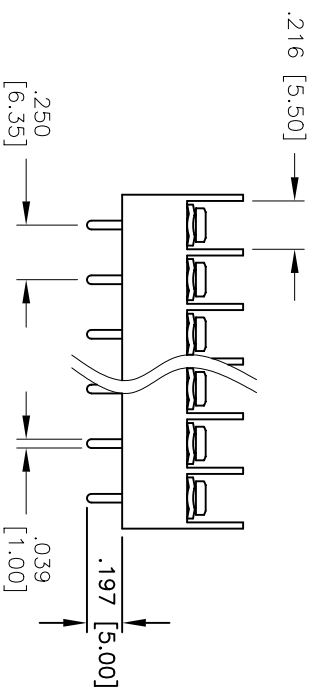
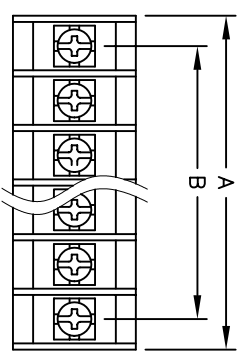


Rev	AWO #	Description	Date	Appr
-		RELEASED	01/20/05	

APPROVED: _____
 DATE: _____ TITLE: _____



A = .325 [8.25] x No. of Positions + .059 [1.50]
 B = .250 [6.35] x No. of Positions - 1

SPECIFICATIONS:
 Material:
 Insulator: PBT, rated UL 94V-0
 Insulator color: Black
 Contacts: Brass, Tin plated
 Screws: Steel, Nickel plated
 Hardware: Brass, Tin plated
 Electrical:
 Operating voltage: 300 VAC max.
 Current rating: 10 Amps max.
 Insulation resistance: 500 Mohms min.
 Dielectric withstanding voltage: 2,000 VAC for 1 minute
 Temperature Rating:
 Operating temperature: -65°C to +125°C
 Mechanical:
 Recommended wire range: 18 - 22 stranded

UNLESS OTHERWISE SPECIFIED ALL DIMENSIONS ARE INCHES [MM]	
TOLERANCES: EXCEPT AS NOTED	HOLDS
.X ± .10	ØX ± .10
.XX ± .020	ØXXX ± .015
.XXX ± .015	ØXXX ± .010
APPROVALS	DATE
DRAWN	SS
CHECKED	
APPROVED	

ADAM TECH
 909 Rahway Avenue, Union, NJ 07083
 Phone: 908-687-5000 Fax: 908-687-5710

TITLE: 250 [6.35] CENTERLINE BARRIER BLOCK
 VERTICAL, PCB, BARRIER ENDS

SIZE: X PART NO.: TBA-XX-01-B
 REF: SCALE: NTS SHEET 1 OF 1