



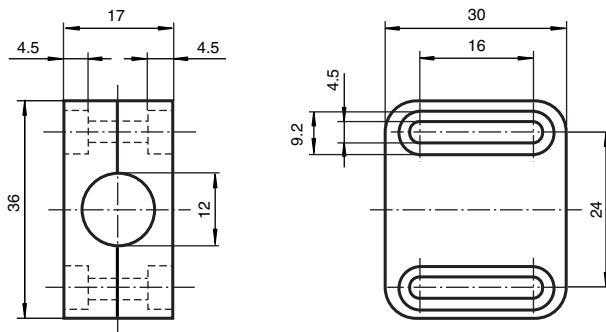
Mounting flange

BF 12

- Retainer for all cylindrical sensors with M12 thread
- Simple installation and exact setting
- Large sensing range (max. 11 mm)

Mounting flange, 12 mm

Dimensions



Technical Data

General specifications

Inside diameter	12 mm
-----------------	-------

Ambient conditions

Ambient temperature	-25 ... 85 °C (-13 ... 185 °F)
---------------------	--------------------------------

Mechanical specifications

Material	Base: Crastin/PBT (green) Upper section: PA (transparent)
Tightening torque, fastening screws	max. 1 Nm
Dimensions	30 mm x 36 mm x 17 mm

Release date: 2021-02-04 Date of issue: 2021-02-05 Filename: 000049_eng.pdf

Refer to "General Notes Relating to Pepperl+Fuchs Product Information".

Pepperl+Fuchs Group
www.pepperl-fuchs.com

USA: +1 330 486 0001
fa-info@us.pepperl-fuchs.com

Germany: +49 621 776 1111
fa-info@de.pepperl-fuchs.com

Singapore: +65 6779 9091
fa-info@sg.pepperl-fuchs.com

PF PEPPERL+FUCHS