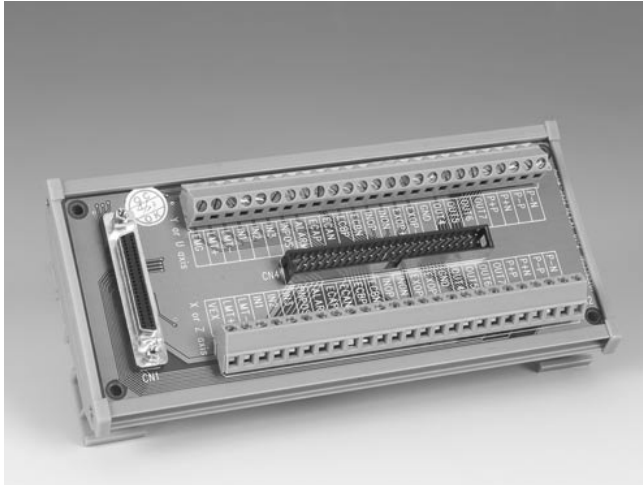


ADAM-3952 Series

PCI-1240U/PCM-3240
Wiring Terminals for
DIN-rail Mounting



RoHS
COMPLIANT

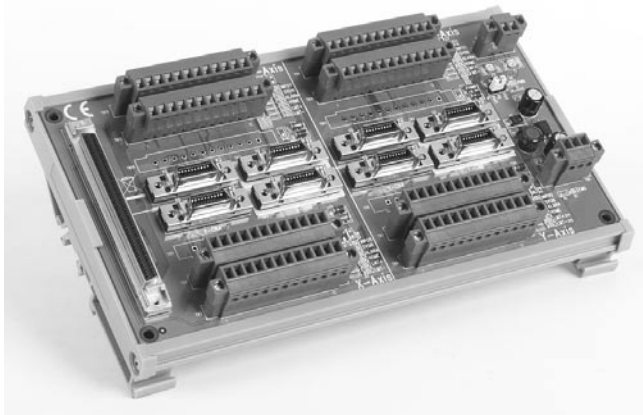
ADAM-3952

PCI-1240U/PCM-3240 50-Pin SCSI-II and IDC Wiring Terminal for
DIN-rail Mounting

Features

- DIN-rail mounting wiring terminal for PCI-1240U/PCM-3240 applications
- Case dimensions (W x L x H): 77.5 x 179.5 x 41.5 mm (3.1" x 7.1" x 1.6")
- 50-pin SCSI and IDC connectors
- To be used with PCI-1240U and PCM-3240

NEW



RoHS
COMPLIANT

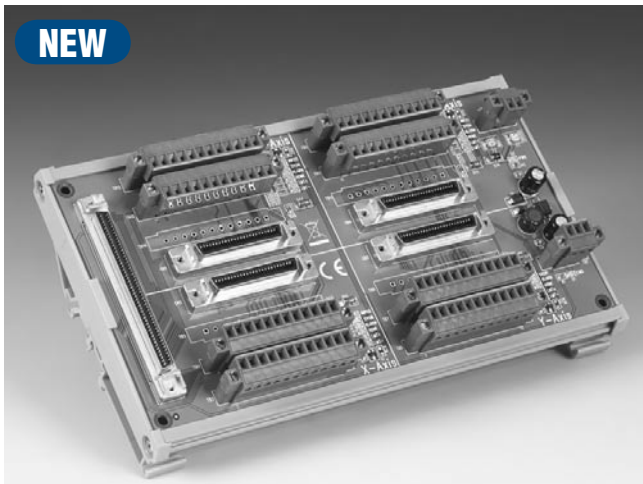
ADAM-3952/J2S

PCI-1240U/PCM-3240 Wiring Terminal for Mitsubishi MR-J2S

Features

- DIN-rail mounting wiring terminal for PCI-1240U/PCM-3240 connecting with Mitsubishi MR-J2S servo motor driver
- Case dimensions (W x L x H): 121 x 202 x 45 mm (4.76" x 7.95" x 1.77")
- One SCSI-100-pin connector to connect with PCI-1240U/PCM-3240
- Eight SCSI 20-pin connector to connect with Mitsubishi motor driver
- Optional cable PCL-101100M-1, PCL-101100M-3 and PCL-10120M-2

NEW



RoHS
COMPLIANT

ADAM-3952/PMA

PCI-1240U/PCM-3240 Wiring Terminal for Panasonic Minus A

Features

- DIN-rail mounting wiring terminal for PCI-1240U/PCM-3240 connecting with Panasonic Minus A servo motor driver
- Case dimensions (W x L x H): 121 x 202 x 45 mm (4.76" x 7.95" x 1.77")
- One SCSI-100-pin connector to connect with PCI-1240U/PCM-3240
- Four SCSI 50-pin connector to connect with Panasonic motor driver
- Optional cable PCL-101100M-1, PCL-101100M-3 and PCL-10150M-2