

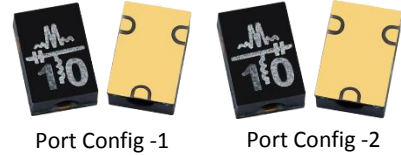
## LEAD-FREE / RoHS-COMPLIANT

### MINIATURE SURFACE MOUNT BIAS TEE

### BT-0010SMG

#### Features

- Frequency Range 20 MHz to 10 GHz
- 1 Watt RF Power Handling
- Miniature Surface Mount Package
- [Reflow Solderable](#)

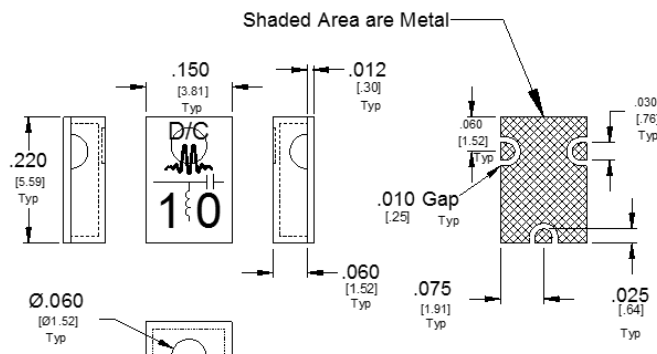


#### Electrical Specifications - Specifications guaranteed from -55 to +100°C, measured in a 50-Ohm system

Parameter	Frequency Range	Min	Typ	Max
Insertion Loss (dB)	20 MHz to 30 MHz		2.5	
	30 MHz to 100 MHz		1	2.5
	100 MHz to 3 GHz		0.5	0.8
	3 GHz to 7 GHz		0.8	1
	7 GHz to 10 GHz		1	2
DC Current (mA)	20 MHz to 10 GHz			500
DC Resistance (Ohms)			<1	
Capacitance (uF)			1	
Inductance (nH)			320	
DC Port Isolation (dB)			40	
DC Voltage Maximum (V)				30
RF Power Maximum (W)				1

Model Number <sup>1</sup>	Description
BT-0010SMG-1 BT-0010SMG-2	20 MHz - 10 GHz Bias Tee, Surface Mount, <b>LEAD-FREE/RoHS COMPLIANT</b>

<sup>1</sup>Default is -2 when not specified.  
Connectorized test fixtures available. Consult factory.



Substrate material is 12-mil thick Rogers 4003, ½ Oz Electrodeposited Cu both sides.  
I/O Pads & Ground Plane Finish is 100-200 μ-inches per QQ-N-290A, Enig  
[Click here for suggested PCB layout.](#)

215 Vineyard Court, Morgan Hill, CA 95037 | Ph: 408.778.4200 | Fax 408.778.4300 | info@markimicrowave.com

# MINIATURE SURFACE MOUNT BIAS TEE

# BT-0010SMG

Page 2

## Typical Performance

Insertion Loss data was taken with de-embedding of connectors and traces. Return loss and group delay data include fixture effects.

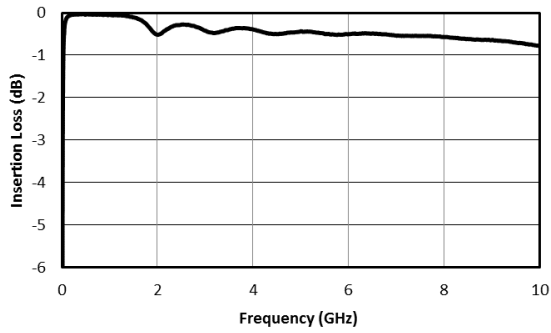


Fig. 1. RF insertion loss.

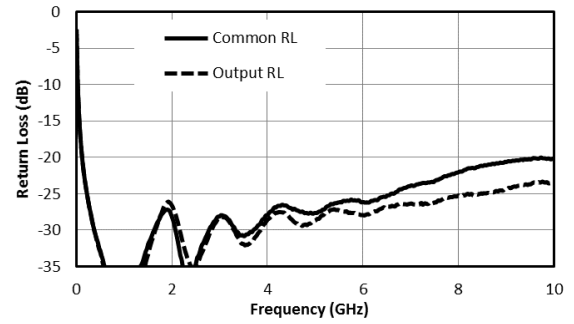


Fig. 2. Return loss.

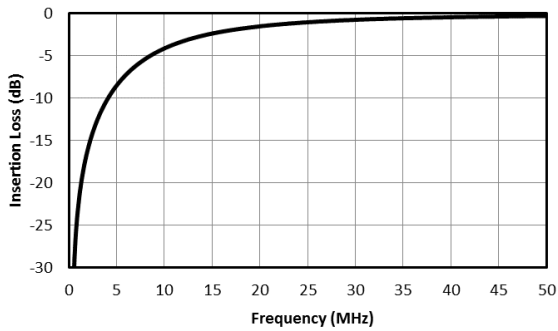


Fig. 3. Low frequency RF response.

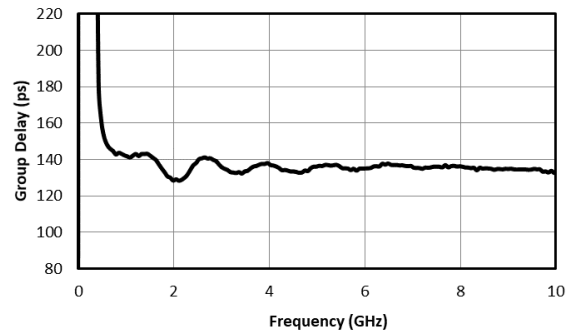


Fig. 4. Group delay.

# MINIATURE SURFACE MOUNT BIAS TEE

# BT-0010SMG

Page 3

## Typical Performance vs Bias Current at Low frequencies

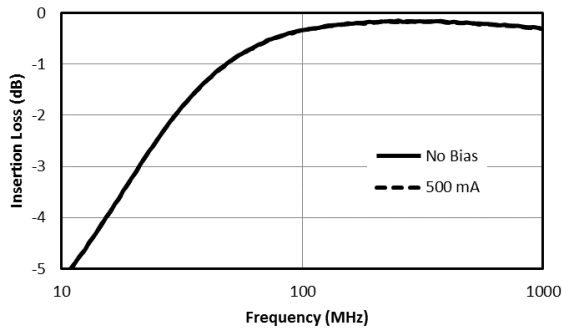


Fig. 5. Insertion Loss vs Bias Current.

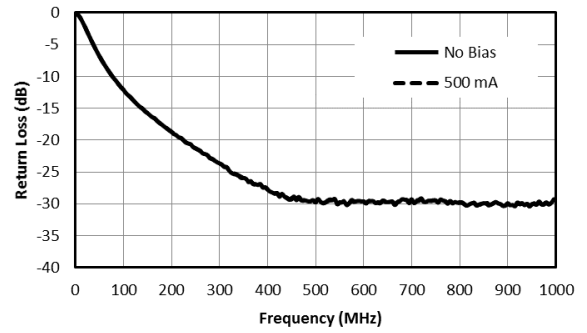


Fig. 6. Common Return Loss vs Bias Current.

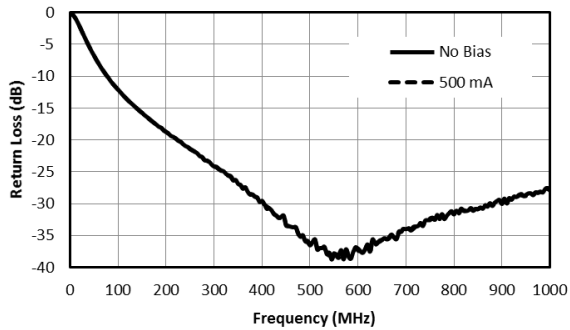


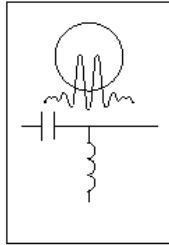
Fig. 7. RF Return Loss vs Bias Current.

# MINIATURE SURFACE MOUNT BIAS TEE

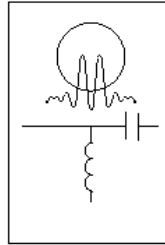
**BT-0010SMG**

Page 4

### Port Configuration Option



BT-0010SMG-1



BT-0010SMG-2

---

### Revision History

Revision code	Revision Date	Comment
C	03/21	Group Delay plot corrected

*Marki Microwave reserves the right to make changes to the product(s) or information contained herein without notice. Marki Microwave makes no warranty, representation, or guarantee regarding the suitability of its products for any particular purpose, nor does Marki Microwave assume any liability whatsoever arising out of the use or application of any product.*