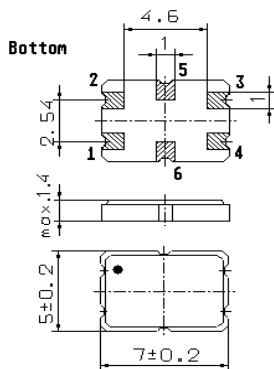


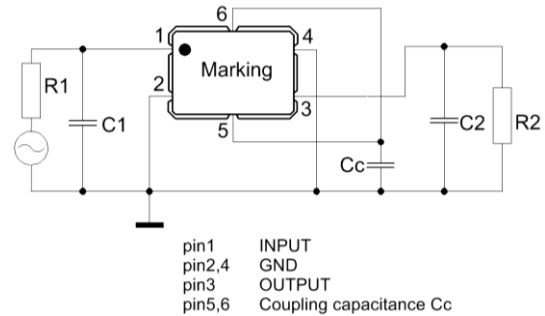
Specification for monolithic crystal filter: **MQF 73.125 - 1500/02**

1. General

1.1. Package:



GS 2



- | | |
|-----------------------------------|--------------------|
| 1.2. Type name: | MQF 73.125-1500/02 |
| 1.3. Number of poles: | 4 |
| 1.4. Operating temperature range: | -30°C to +85°C |
| 1.5. Storage temperature range: | -40°C to +85°C |

2. Electric values

- | | |
|---|---|
| 2.1. Nominal centre frequency fo: | 73.125 MHz |
| 2.2. Pass band | |
| 2.2.1. Bandwidth between 3 dB - frequencies: | $> f_o \pm 7.5$ kHz |
| 2.2.2. Ripple: | < 1.0 dB at $f_o \pm 4.5$ kHz |
| 2.2.3. Insertion loss:
(measured on smallest attenuation in pass band) | < 5.0 dB |
| 2.3. Stop band | |
| 2.3.1. $f_o \pm 25$ kHz | > 20 dB |
| 2.3.2. $f_o \pm 50$ kHz | > 40 dB |
| 2.3.3. alternate attenuation | $f_o \pm 100$ kHz > 50 dB (except spurious) |
| | $f_o \pm 1000$ kHz > 70 dB |
| 2.4. Group delay distortion | $f_o \pm 7.5$ kHz < 35 μ s |
| 2.4.1. Absolute Group delay | f_o < 65 μ s |
| 2.5. Terminating impedance R/C (input and output): | 350 Ω // 2.5 pF |
| 2.5.1. Coupling capacitance | 13 pF |
| 2.6. Input power level for reference measurement: | 0 dBm |
| 2.6.1. Maximum input power level without destruction: | +10 dBm |
| 2.7. Out band Intermodulation | |
| 2.7.1. frequency 1: | $f_o \pm 50$ kHz |
| 2.7.2. frequency 2: | $f_o \pm 100$ kHz |
| 2.7.3. Input power level: | -24 dBm |
| 2.7.4. IM: | > 75 dB |
| 3. Marking: | • M73125
yyww |
| 4. Environment conditions: | Corresponding to Vectron standard CF001 |
| 5. Filters are Pb-free and 2002 /95 / EC RoHS compliant | |

Edited by: _____ date: _____ name: _____