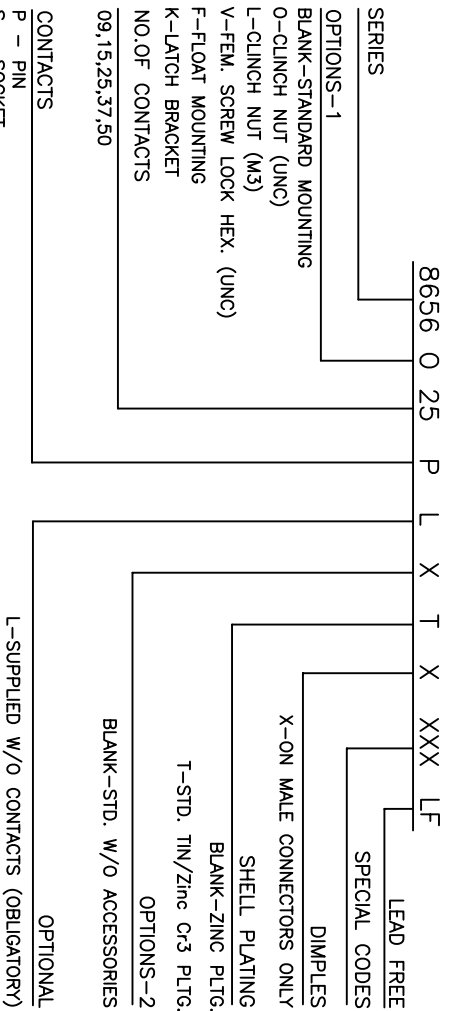


| SHELL TYPE OF MOUNTING | TYPE OF MOUNTING | POSITIONS | | DIMENSIONS | |
|------------------------|------------------|-----------|-------|------------|------|
| | | FRONT | REAR | FRONT | REAR |
| 09 | STD | 23.00 | 13.80 | 24.99 | 2.20 |
| | FLLOAT | 20.50 | 11.40 | 24.99 | 3.20 |
| 15 | STD | 22.20 | 13.00 | 24.99 | 2.10 |
| | FLLOAT | 29.60 | 12.20 | 33.32 | 2.20 |
| 25 | STD | 43.30 | 12.20 | 47.04 | 2.20 |
| | FLLOAT | 45.10 | 13.80 | 47.04 | 3.20 |
| 37 | STD | 59.10 | 11.40 | 63.50 | 2.10 |
| | FLLOAT | 61.50 | 13.80 | 63.50 | 2.20 |
| 50 | STD | 56.30 | 14.10 | 61.11 | 3.20 |
| | FLLOAT | 59.20 | 16.60 | 61.11 | 2.20 |

TABLE 2

NOTE:-INSIDE DIM. OF MALE AND OUTSIDE DIM. OF THE FEMALE CONNECTOR.

ORDERING INFORMATION

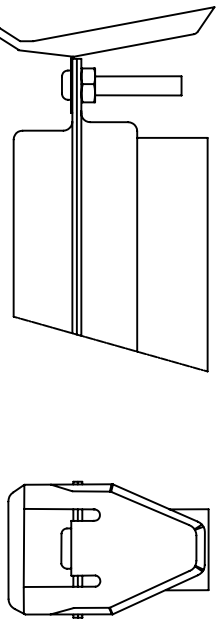


TECHNICAL SPECIFICATIONS

- SHELLS : TIN/CADMIUM/ZINC PLATED STEEL
- INSULATOR MATERIAL : SELF EXTINGUISHING THERMOPLASTIC- TO UL CLASS 94 V0
- CONTACTS : TIN/CADMIUM/ZINC PLATED STEEL
- CONTACTS DIA ON ACTIVE AREA : Ø1 MM.
- CONTACTS MATERIAL : COPPER ALLOY
- CONTACT PLATING : GOLD / GXT OVER NICKEL (ACTIVE ZONE)
- FOR LEAD FREE PLATING : TIN OVER NICKEL (TERMINATION ZONE)
- OPERATING TEMPERATURE : -55°C TO +125°C
- OPERATING CURRENT : 5 A PER CONTACT
- CONTACT RESISTANCE : <10mΩ
- INSULATION RESISTANCE : >5000 MΩ IN AMBIENT CONDITIONS.
- MAXIMUM VOLTAGE : 1000 V.r.m.s
- MECHANICAL ENDURANCE : 200 MATINGS (CODE 64)
- DAMP HEAT : 21 DAYS
- WIRE SIZE : AWG 20/24 OR AWG 24/28
- CONTACTS : CRIMP REMOVABLE
- MAX DIA OF WIRE : 1.52mm (AWG 20/24) 1.02mm (AWG 24/28)

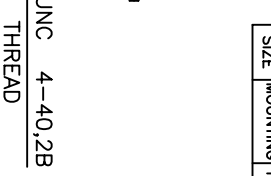
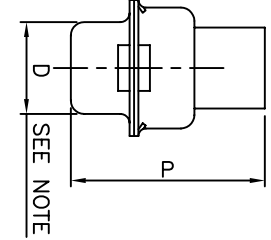
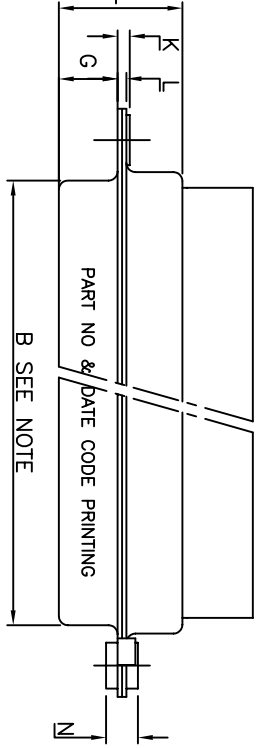
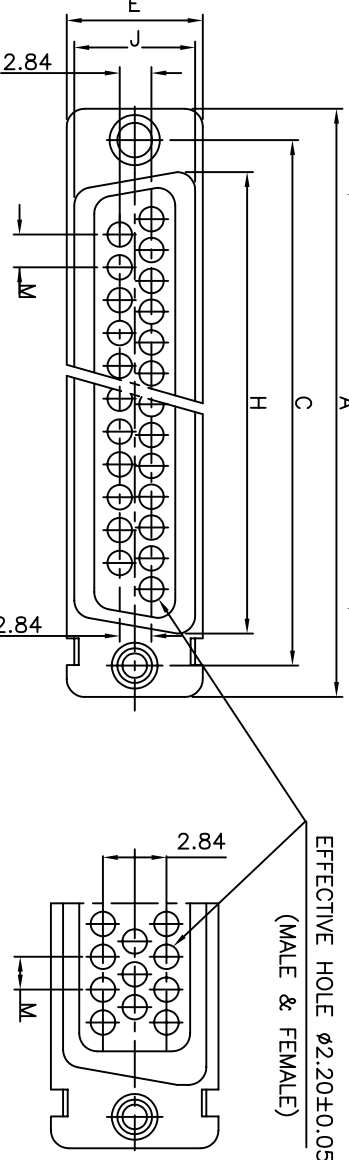
- CONTACTS DIA ON ACTIVE AREA : Ø1 MM.
- CONTACTS MATERIAL : COPPER ALLOY
- CONTACT PLATING : GOLD / GXT OVER NICKEL (ACTIVE ZONE)
- FOR LEAD FREE PLATING : TIN OVER NICKEL (TERMINATION ZONE)
- OPERATING TEMPERATURE : -55°C TO +125°C
- OPERATING CURRENT : 5 A PER CONTACT
- CONTACT RESISTANCE : <10mΩ
- INSULATION RESISTANCE : >5000 MΩ IN AMBIENT CONDITIONS.
- MAXIMUM VOLTAGE : 1000 V.r.m.s
- MECHANICAL ENDURANCE : 200 MATINGS (CODE 64)
- DAMP HEAT : 21 DAYS
- WIRE SIZE : AWG 20/24 OR AWG 24/28
- CONTACTS : CRIMP REMOVABLE
- MAX DIA OF WIRE : 1.52mm (AWG 20/24) 1.02mm (AWG 24/28)

WITH LATCH BRACKET

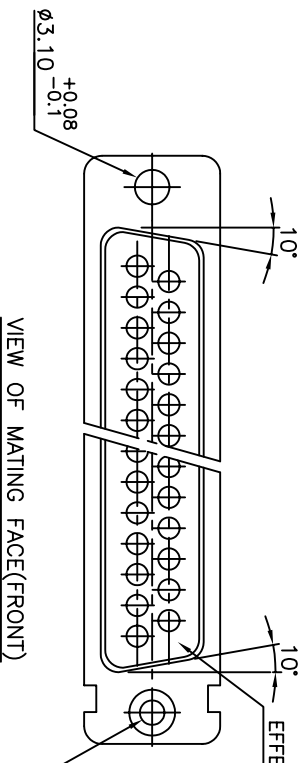


"This LF product meets European Union Directives and other country regulations as described in GS-22-008"
Packaging as per GS-14-920

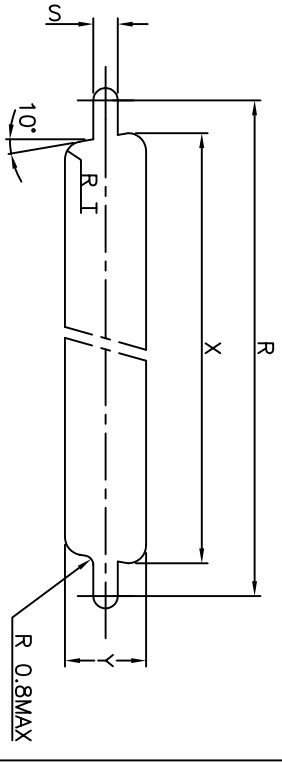
LAYOUT OF 50 POS. CONNECTOR



WITH FEMALE SCREW LOCK



PANNEL CUTOUTS



CUT-OUT FOR MOUNTING FROM REAR OR FRONT OF PANEL

CUT-OUT FOR MOUNTING FROM REAR OF PANEL ONLY
SEE TABLE 2



| | | | | | | | |
|-------------|-------------|-----------------|------------------|---------------------------------------|--------|----------------|-----------------------|
| mat'l. code | ISO 1302 | tolerance | ISO 406 ISO 1101 | projection | MM | product family | D-SUB CRIMP CONNECTOR |
| ltr | ecn no | dr | date | tolerances unless otherwise specified | angles | linear | title |
| E | 106-0074 | EVJ | 2006/06/08 | | | | dwg no |
| F | 111-0003 | AMR | 2011-1-06 | | | | C-DSUB-0071 |
| F1.1 | - | PK | 2012/05/29 | | | | sheet 1 of 1 |
| G | ELX-1-01185 | PK | 2012/06/01 | | | | size |
| | enr | George V Joseph | 1999/03/20 | | | | A3 |
| | chr | Abhilash M R | 2011-01-06 | | | | type |
| | appd | Sudhir Varma | 2011-01-06 | | | | Product Customer |
| sheet index | revision | sheet | 1 | | | | Drawing |