



# ATP16 Series Anti-Vandal Sealed Pushbutton Switch

**NEW**

Pushbutton  
A

## Features/Benefits

- Momentary or Lock version
- IP67 sealed
- Rated at 2A / 36 Vdc
- 1,000,000 life cycle
- Various colors of LED illuminate indicator
- Choices of actuator with ring or power logo
- RoHS compliant

## Typical Applications

- Alarm, safety and security systems
- Intercom "push-to-talk" devices
- Automatic food and drink vending machines
- Parking lot ticket machines & ticket paying stations
- Industrial Instruments



## Specifications

FUNCTION: SPST  
CONTACT ARRANGEMENT: N.O.  
MOUNTING TYPE: Threaded front panel mount  
TORQUE FOR THREADED BODY: 11.5 kgf/cm

## Mechanical

OPERATING LIFE: Momentary 1,000,000 cycles  
Lock 100,000 cycles  
TOTAL TRAVEL: Momentary 2.0 mm; Lock 2.3 mm  
OPERATING FORCE: 4.5 ± 1.5N

## Electrical

CONTACT RATING: 2A / 36Vdc  
OPERATING LIFE: Make-and-break cycles at full load  
200,000 (Momentary)  
100,000 (Lock)  
DIELECTRIC STRENGTH: 2,000 V RMS @ sea level  
INSULATION RESISTANCE: 1,000 MΩ min. @ 500 VDC  
INITIAL CONTACT RESISTANCE : 50 mΩ max @1A 12VDC

## Materials

BUSHING: Stainless steel / Aluminum alloy, anodized  
BASE: PBT (UL 94-A0), Nylon 6/6 (lock version)  
ACTUATOR: PC (UL 94-V2); POM (lock version)  
INTERNAL ASSEMBLY: POM / PA66  
SPRING: Steel  
SEALING / O-ring: Silicone (Translucent) / Silicone  
TERMINALS / CONTACT: Brass, Silver or gold plated  
HEX NUT: Brass (Nickel plated)

## Operating Environment

OPERATING TEMPERATURE: -20°C to +70°C  
SEALING / PROTECTION: IP67

**NOTE:** Specifications and materials listed above are for switches with standard options.  
For information on specific and custom switches, please contact Customer Service.

## Build-A-Switch

To order, simply select desired option from each category and place in the appropriate box.



Designation             
ATP16 Series

Actuator Style             
D Dome\*  
S Standard\*\*

Actuator Indicator             
L1 Ring  
L5 Ring & Power logo

LED Illumination           

Color	Dual color
0 Without LED	A Red & Green
2 White	R RGB***
3 Red	
4 Orange	
5 Yellow	
6 Green	
7 Blue	

LED voltage DC             
00 0V without resistor  
03 3V  
06 6V  
12 12V  
24 24V

Terminal plating             
G Gold flash

Termination             
04 Solder lug  
W1 Wire lead 500mm \*\*\*\*

Mechanical function             
A Momentary (Double D bushing)  
E Lock (D shape bushing)

Contact arrangement             
S SPST

Bushing type           

B3	Al alloy (Black anodized)
B4	Al alloy (Natural anodized)
M0	Stainless (Natural), Round***
M4	Stainless (Natural), Double D***

\* For bushing type B3 and B4 only.

\*\* Available on bushing type M0 & M4 only.

\*\*\* Available on momentary function only.

\*\*\*\* Available upon request, please consult your sales representative for details.



18 Jun 19

**NEW**

# ATP16 Series Anti-Vandal Sealed Pushbutton Switch

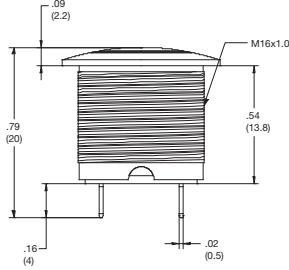


**A**  
Pushbutton

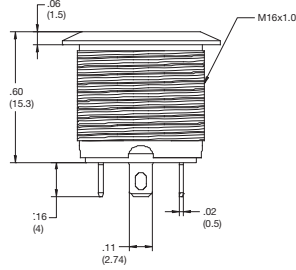
## STANDARD VIEW

### MOMENTARY

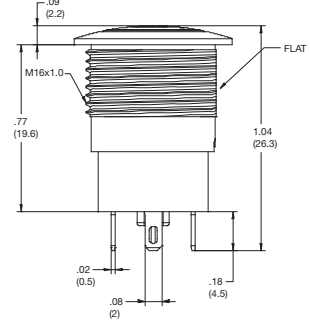
#### DOME



#### STANDARD / FLAT

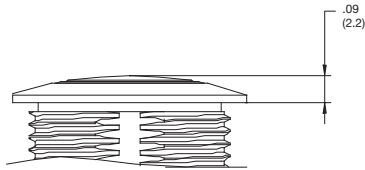


### LOCK

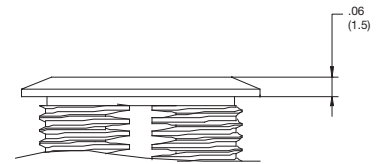


## ACTUATOR STYLE

### D DOME

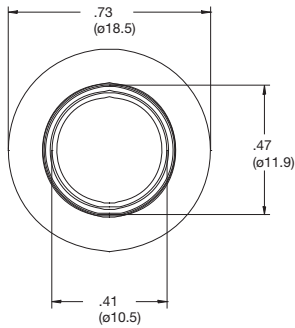


### S STANDARD / FLAT

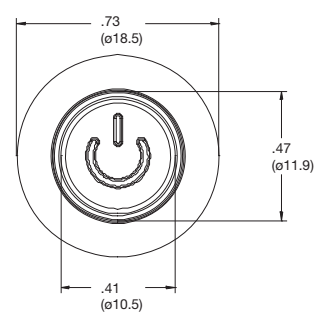


## ACTUATOR INDICATOR

### L1 RING



### L5 RING & POWER





# ATP16 Series Anti-Vandal Sealed Pushbutton Switch

**NEW**

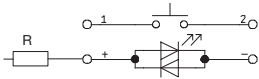
Pushbutton

A

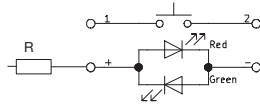
## CIRCUIT

### MOMENTARY

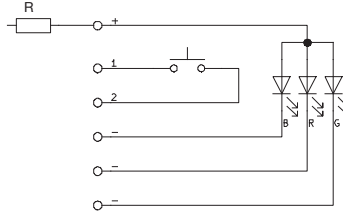
#### SINGLE COLOR LED



#### DUAL COLOR LED



#### RGB LED

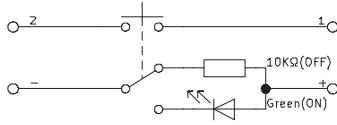


6 / 12 / 24V LED

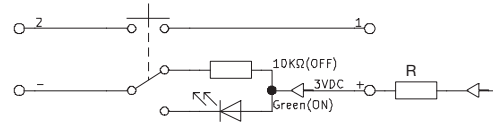
3V LED

### LOCK

#### SINGLE COLOR LED

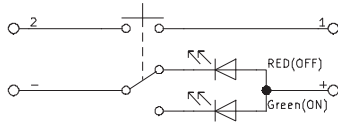


3V LED

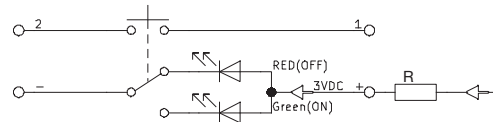


6 / 12 / 24V LED

#### DUAL COLOR LED



3V LED



6 / 12 / 24V LED

R: Resistor value is according to the LED voltage applied.

Resistor value (Apply LED Voltage)
---------------------------------------

LED input 3 VDC, 47 ohms (Red/Yellow/Orange LED type only)
---

LED input 6 VDC, 180 ohms
---------------------------

LED input 12 VDC, 470 ohms
----------------------------

LED input 24 VDC, 1000 ohms
-----------------------------

Ohms value of resistance tolerance:  $\pm 5\%$

**NEW**

# ATP16 Series Anti-Vandal Sealed Pushbutton Switch



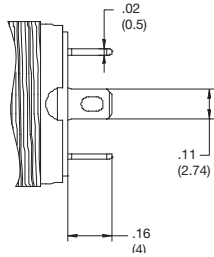
**A**

**Pushbutton**

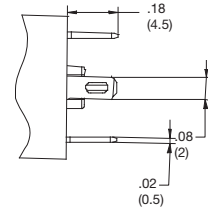
## TERMINATION

### 04 SOLDER LUG

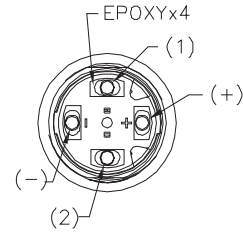
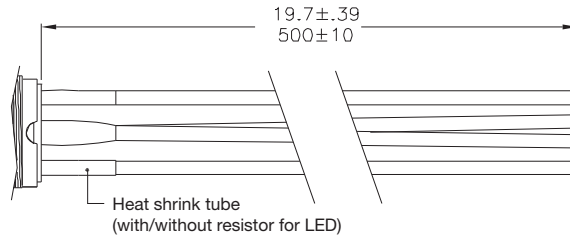
**MOMENTARY**



**LOCK**



### W1 WIRE LEAD 500MM\*

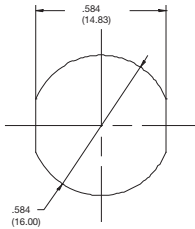


\* Available upon request, please consult your sales representative for details.

## PANEL CUTOUT

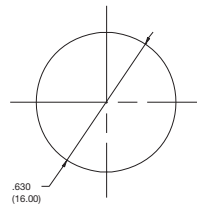
### B3, B4 & M4

**DOUBLE D**



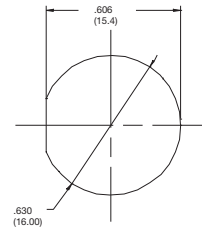
### M0

**ROUND**



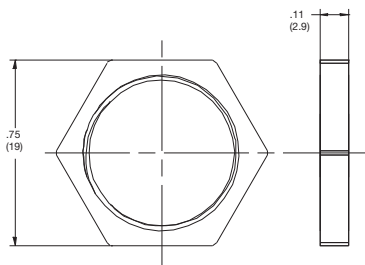
### B3 & B4

**D SHAPE**

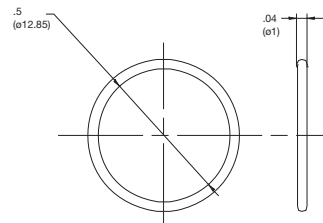


## HARDWARE

**HEX NUT**



**O RING**



18 Jun 19

Dimensions are shown: mm (inches)  
Specifications and dimensions subject to change