

Han L32 B-HTE-HC-SL-M50

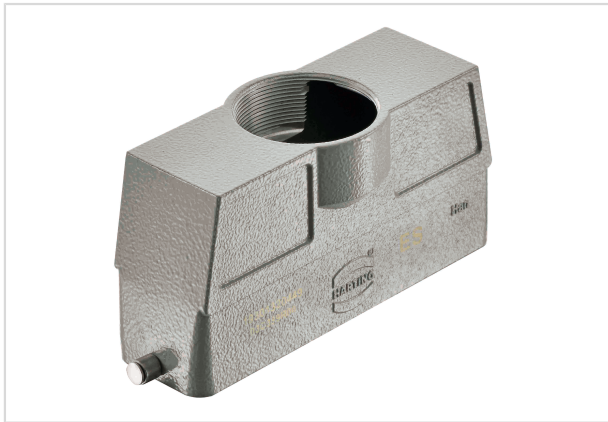


Image is for illustration purposes only. Please refer to product description.

Part number	19 30 132 0449
Specification	Han L32 B-HTE-HC-SL-M50
HARTING eCatalogue	https://b2b.harting.com/19301320449

Identification

Category	Hoods/Housings
Series of hoods/housings	Han [®] B
Type of hood/housing	Hood

Version

Size	L32 B
Version	Top entry
Cable entry	1x M50
Locking type	Single locking lever
Field of application	Standard hoods/housings for industrial connectors

Technical characteristics

Limiting temperature	-40 ... +125 °C
Degree of protection acc. to IEC 60529	IP65
Type rating acc. to UL 50 / UL 50E	4 4X 12

Material properties

Material (hood/housing)	Aluminium die-cast
Surface (hood/housing)	Powder-coated
Colour (hood/housing)	RAL 7037 (dust grey)
RoHS	compliant
ELV status	compliant



Pushing Performance

Material properties

China RoHS	e
REACH Annex XVII substances	No
REACH ANNEX XIV substances	No
REACH SVHC substances	No
California Proposition 65 substances	No

Specifications and approvals

Approvals	DNV GL
CE	Yes

Commercial data

Packaging size	1
Net weight	319 g
Country of origin	China
European customs tariff number	85389099
eCl@ss	27440202 Shell for industrial connectors