

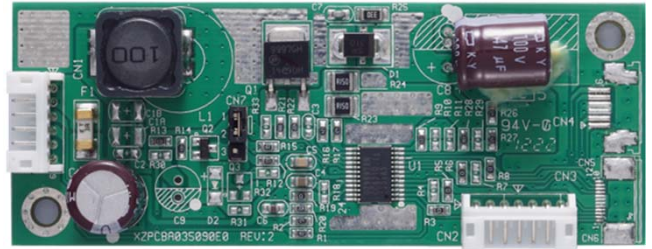
LE-800

High efficiency LED controller for LCD panel



Features

- Flexible, low cost and high performance
- DC 10.8V - 26.4V input
- PWM control from 0.5% to 100%
- 27W driving capability
- Options for 1, 2, 4, 6 or 8 strings LED light bar



Specifications

Input connection	Pin #1,2	DC 10.8V - 26.4V
	Pin #3	Enable (o/p control)
	Pin #4	PWM dimming control
	Pin #5,6	Ground
Input characteristics	DC input	12 Vdc / 2.5A 24 Vdc / 1.2A
	Enable	On : 3.3 - 5 Vdc Off : 0 Vdc
	PWM frequency	100Hz - 50KHz
Agency	FCC / CE compliance	

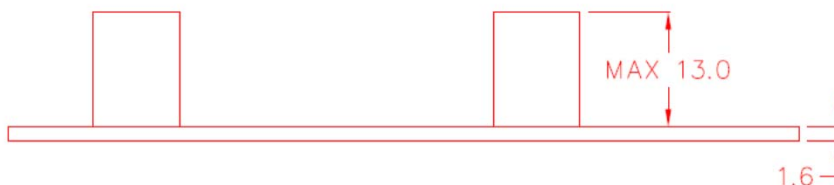
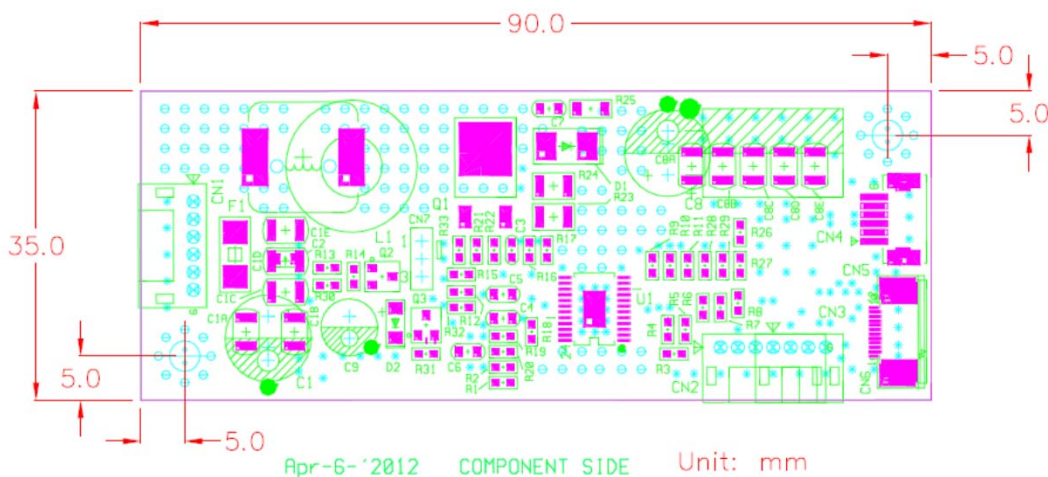
Output characteristics *	Driving voltage	63V max
	Driving current	600mA max.
	Output ripple	120mV max
	Output protection	75V max
	Efficiency	83% min
Dimension	Output power	27W max
	Dimension	90 (L) x 35 (W) x 13 (H) mm
Temperature	Packing quantity	
	Operation	-20 ~ 70 degree C
	Storage	-30 ~ 80 degree C

* Actual data will be varied per LED quantities and strings of LCD panel.

Ordering information

- Accessory :
LED wire connected to ADS scaler board
- Selected options :
1). LED driving wire to panel
2). Please specify LED strings for fine tuning
3). Please identify LCD panel part number

Product drawing



* All specification and photos are subject to change without notice.