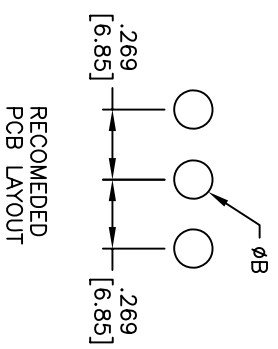
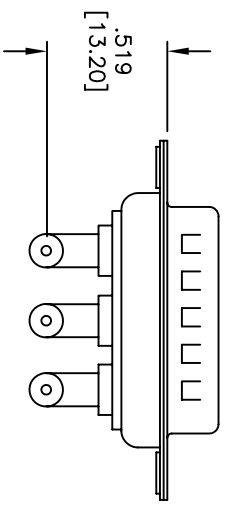
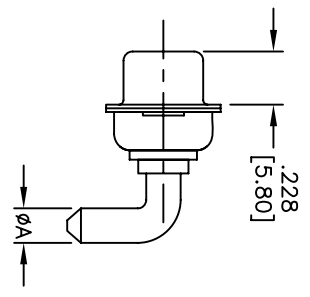
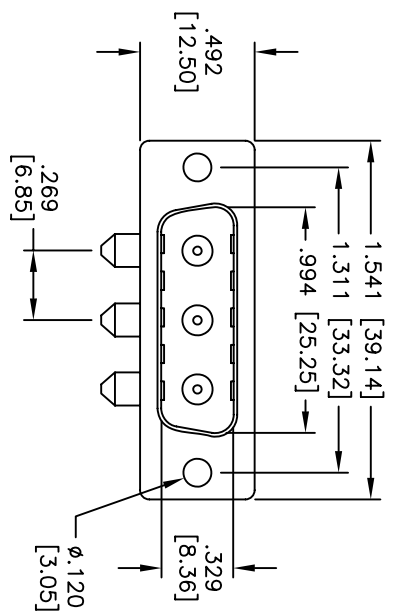


| Rev | AWO # | Description | Date | Appr |
|-----|-------|-------------|---------|------|
| - | | RELEASED | 6/19/06 | |

APPROVED: _____
 DATE: _____ TITLE: _____



| PART NO. | CURRENT RATING | DIMENSION | |
|---------------|----------------|--------------|--------------|
| | | φA | φB |
| D3W3-SLP-10-1 | 10 AMPS | φ.067 [1.70] | φ.086 [2.20] |
| D3W3-SLP-20-1 | 20 AMPS | φ.110 [2.80] | φ.129 [3.28] |
| D3W3-SLP-40-1 | 40 AMPS | φ.147 [3.75] | φ.165 [4.20] |

SPECIFICATIONS:
 Material: Insulator: PBT, glass reinforced, rated UL 94V-0
 Insulator color: Black
 Contacts: Brass
 Shell: Steel, Tin plated
 Hardware: Brass, Nickel plated
 Plating: Gold flash over Nickel underplate overall
 Electrical:
 Operating voltage: 250 VAC max
 Current rating: 10, 20 or 40 Amps max. (See Chart)
 Contact resistance: 2.7 mohms max
 Insulation resistance: 5,000 Mohms min
 Dielectric withstanding voltage: 1,000 VAC for 1 minute
 Temperature Rating:
 Operating temperature: -55°C to +280°C
 Environmental:
 Lead free, RoHS compliant
 Recommended soldering temp: 235°C for 5 seconds



ADAM TECH

909 Rahway Avenue, Union, NJ 07083
 Phone: 908-687-5000 Fax: 908-687-5710

TITLE: D-SUB, MALE POWER, D3W3, RIGHT
 ANGLE, PCB 10A, 20A OR 40A

| | | | | | |
|---|-------|------------|-------|---|-------|
| UNLESS OTHERWISE SPECIFIED ALL DIMENSIONS ARE INCHES [MM] TOLERANCES: EXCEPT AS NOTED | | INCHES | | HOLES | |
| .X | ±.10 | Ø.X | ±.10 | .XXX | ±.015 |
| .XX | ±.020 | Ø.XXX | ±.015 | .XXX | ±.010 |
| .XXX | ±.015 | Ø.XXX | ±.010 | | |
| APPROVALS | | DATE | | TITLE | |
| DRAWN | SS | 6/19/06 | | D-SUB, MALE POWER, D3W3, RIGHT ANGLE, PCB 10A, 20A OR 40A | |
| CHECKED | | | | SIZE PART NO. | |
| APPROVED | | | | X D3W3-PLP-XX-1 | |
| REF: | | SCALE: NTS | | SHEET 1 OF 1 | |