

**PLEASE CHECK WWW.MOLEX.COM FOR LATEST PART INFORMATION**

**Part Number:** [0945060100](#)  
**Status:** **Active**  
**Description:** Quick Disconnect, Safelock Female for 0.50-1.00mm<sup>2</sup> (18-24 AWG) Wire, Accepts 6.35mm (.250") x 0.81mm (.032") Tab, Unplated

**Documents:**

[Drawing \(PDF\)](#) [RoHS Certificate of Compliance \(PDF\)](#)  
[Product Specification PS-94506-001 \(PDF\)](#)

**Agency Certification**

CSA LR19980  
 UL E29179

**General**

Product Family Quick Disconnects  
 Series [94506](#)  
 Crimp Quality Equipment Yes  
 Product Name Safelock  
 Type Quick Disconnect

**Physical**

Barrel Type Open  
 Flammability 94V-2  
 Gender Female  
 Glow-Wire Compliant No  
 Insulation None  
 Lock to Mating Part None  
 Material - Metal Brass  
 Material - Plating Mating Unplated  
 Material - Plating Termination Tin  
 Orientation Straight  
 Packaging Type Reel  
 Polarized to Mating Part Yes  
 Tab Thickness 0.81mm (.032")  
 Tab Width 6.35mm (.250")  
 Temperature Range - Operating -40°C to +80°C  
 Termination Interface: Style Crimp or Compression  
 Wire Size AWG 18, 20, 22, 24  
 Wire Size mm<sup>2</sup> 0.50 - 1.00

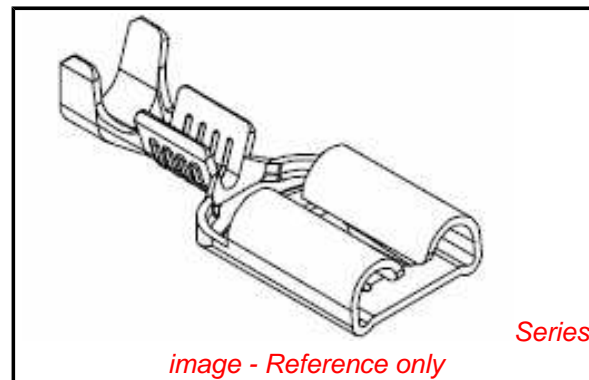
**Electrical**

Voltage - Maximum 250V

**Material Info**

**Reference - Drawing Numbers**

Product Specification PS-94506-001  
 Sales Drawing SD-94506-0XXX



**EU RoHS**

**ELV and RoHS Compliant**

**REACH SVHC**

**Contains SVHC: No**

**Halogen-Free**

**Status**

**Halogen-Free**

**China RoHS**



**Need more information on product environmental compliance?**

Email [productcompliance@molex.com](mailto:productcompliance@molex.com)  
 For a multiple part number RoHS Certificate of Compliance, [click here](#)

Please visit the [Contact Us](#) section for any non-product compliance questions.

**Search Parts in this Series**

[94506Series](#)

**Use With**

[94506 Quick Disconnect Housing](#)

**Application Tooling | [FAQ](#)**

*Tooling specifications and manuals are found by selecting the products below. Crimp Height Specifications are then contained in the Application Tooling Specification document.*

**Global**

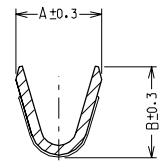
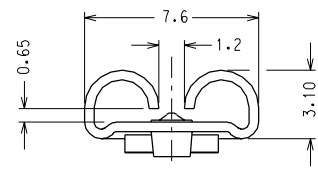
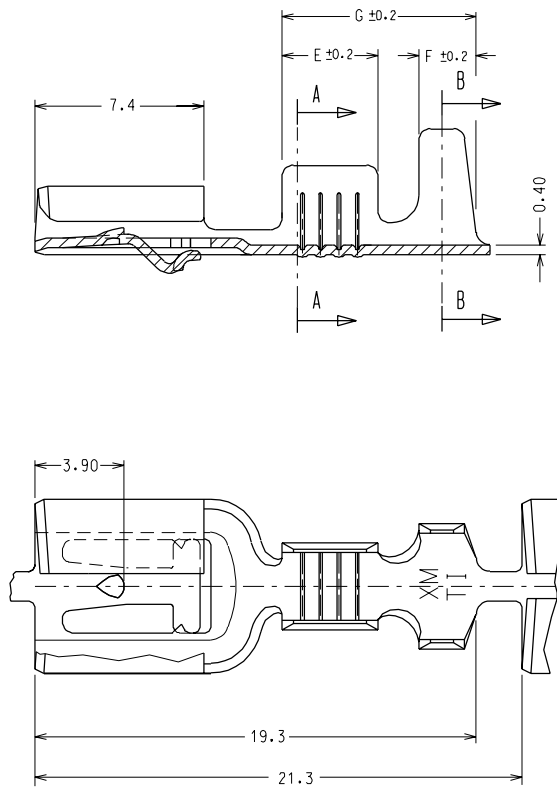
**Description**

**Product #**

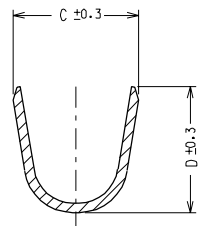
Mini-Mac™

[0011182204](#)

Applicator



SECTION A - A



SECTION B - B

CODICE P/N	FINITURA PLATING	MATERIALE MATERIAL	SEZ. RAME WIRE RANGE	Ø ISOLANTE INS. RANGE	DIMENSIONI / DIMENSION						
					A	B	C	D	E	F	G
94506 - 0100	greggio/ plain	ottone brass	0.5 - 1.0	2.0 - 3.3	3.0	3.0	4.5	4.5	4.2	2.4	8.3
94506 - 0101	stagnato/ tin				3.8	4.0	5.5	5.5	4.2	2.5	8.5
94506 - 0200	greggio/ plain		1.0 - 2.5	2.7 - 4.3	3.8	4.0	5.5	5.5	4.2	2.5	8.5
94506 - 0201	stagnato/ tin				3.8	4.0	5.5	5.5	4.2	2.5	8.5

IMPIEGATO CON HOUSING 94506-900X  
TO BE USED WITH HOUSING P/N 94506-900X

B1	ECN Z7-011 22-07-96 Mod. spessore G.F.	LTR	REVISIONS 11-12-90 G. F.	DIMENSIONS SHOWN (METRIC) INCH UNLESS OTHERWISE SPECIFIED TOLERANCES ANGULAR ± 2° INCH (METRIC)	DRWG BY F. Gottardo	REVISE ONLY ON CAD SYSTEM		SH.	REV.			
	B				ECN Z1-129 Agg. art. 94506-01XX 11-09-91 G. F.	CHK'D BY	THIS DRAWING CONTAINS INFORMATION THAT IS PROPRIETARY TO MOLEX INC AND SHOULD NOT BE USED WITHOUT WRITTEN PERMISSION					
	A				EMESSO DIS. DEFINITIVO ECN Z0-141 11-12-90 G. F.	APP'D BY M. Previato	TITLE CAPOCORDA FEMMINA PER MASCHIO 6.3 x 0.8 -SAFELOCK- QIK KONNECT RECEPTACLE FOR 6.3 x 0.8 TABS -SAFELOCK-					
					SCALE 5 : 1	<b>MOLEX INCORPORATED</b>		SHEET NO. 1 / 1	DATE 14-12-89			
					PART NO.	VEDI SEE	TABELLA CHART	DWG NO. SD 94506 - 0XXX	SIZE B			