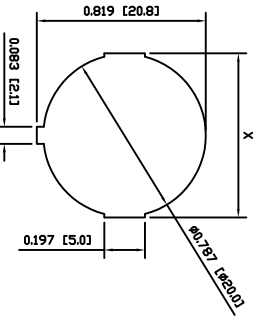
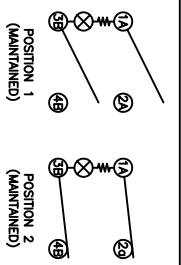


**SUGGESTED PANEL CUTOUT**

PANEL THICKNESS	X
0.030~0.049 [0.75~1.25]	0.795 [20.2]
0.049~0.079 [1.25~2.00]	0.803 [20.4]
0.079~0.118 [2.00~3.00]	0.811 [20.6]



**SCHEMATIC**



**SPECIFICATIONS**

**FUNCTION:**  
2P1T OFF-ON

**RATINGS:**  
ANSI/UL 1054 and CAN/CSA C22.2 No. 55 (E194579):  
10A 125VAC [UR, CLR]  
EN 61058-1:2002:  
6(2)A 250V~ μ I E4 T125/55 [ENEC14, SEMKO]  
ILLUMINATION VOLTAGE:  
125V




**CONTACT RESISTANCE:**  
Initial: 35mΩ Max. at 50VAC

**INSULATION RESISTANCE:**  
100MΩ Min. at 500VDC

**DIELECTRIC STRENGTH:**  
1,500VAC For 1 Minute

**ELECTRICAL LIFE:**  
6,000 Cycles [UR, CLR]  
10,000 Cycles [ENEC14, SEMKO: 10(Q)A 250V~]

**TEMPERATURE:**  
Operating: -20°C to 105°C [UR, CLR]  
Storage: -20°C to 125°C [ENEC14, SEMKO]

**APPROVALS:**  



**RoHS COMPLIANT**

**COLORS AND MARKINGS**

**BODY:**  
Black

**ACTUATOR:**  
Transparent Blue

**MARKINGS:**  
None

**MARKING COLOR:**  
None

**MATERIALS**

**BODY:**  
Polyamide 6/6 (PA66), UL94 V-2

**ACTUATOR:**  
Polycarbonate (PC), UL94 V-2

**LAMP:**  
Neon Bulb

**MOBILE CONTACT:**  
Silver Plated Copper

**CONTACTS:**  
Silver Alloy

**TERMINALS:**  
Silver Plated Copper  
Silver Plated Brass

ACTUATOR	A	09/08/11	CAB
BODY	B	11/10/04	BMA
COLORS	A	09/08/11 <td>CAB</td>	CAB
MATERIALS	A	09/08/11 <td>CAB</td>	CAB
SPECIFICATIONS	B	11/10/04	BMA
REFERENCE	REV.	DATE	BY

REVISION	NO.	DESCRIPTION	DATE	BY
1	1	THE INFORMATION CONTAINED IN THIS DOCUMENT IS PROPRIETARY TO E-SWITCH-LAMB		

REVISION	NO.	DESCRIPTION	DATE	BY
1	1	CORRECT TERMINAL CALL-OUTS	2013	11/10/04
2	2	INITIAL RELEASE	1879	10/07/13
3	3			
4	4			
5	5			

DIMENSIONS	INCHES [MILLIMETERS]
GENERAL TOLERANCES	±0.008 [±0.2] / ±1'
SCALE	DRAWING NOT TO SCALE
PROJECTION	



RR81231000-146

DATE: JANUARY 15, 2010

REVISION: B