

Han-Eco 6B Outd-HBM-with SL-with cover

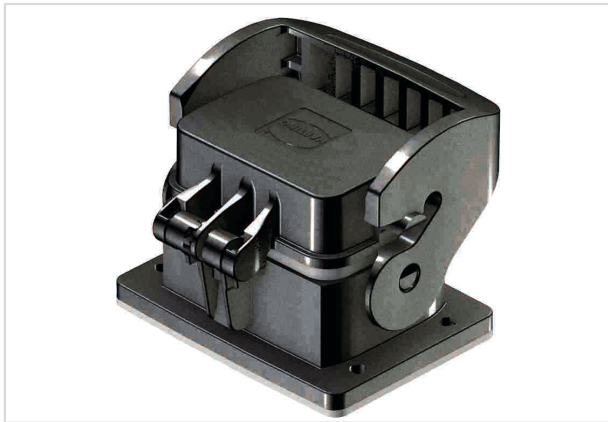


Image is for illustration purposes only. Please refer to product description.

| | |
|--------------------|---|
| Part number | 19 43 206 0341 |
| Specification | Han-Eco 6B Outd-HBM-with SL-with cover |
| HARTING eCatalogue | https://b2b.harting.com/19432060341 |

Identification

| | |
|-----------------------------|---------------------------|
| Category | Hoods/Housings |
| Series of hoods/housings | Han-Eco® B |
| Type of hood/housing | Bulkhead mounted housing |
| Description of hood/housing | With thermo-plastic cover |

Version

| | |
|--------------|----------------------|
| Locking type | Single locking lever |
| Size | 6 B |

Technical characteristics

| | |
|--|-----------------|
| Limiting temperature | -40 ... +125 °C |
| Number of relockings | ≥500 |
| Degree of protection acc. to IEC 60529 | IP66 |

Material properties

| | |
|---|--|
| Material (hood/housing) | Polyamide (PA) Fibre-glass reinforced |
| Colour (hood/housing) | RAL 9005 (jet black) |
| Material (seal) | FPM |
| Colour (seal) | RAL 7001 (silver-grey) |
| Material (locking) | Polyamide (PA) Fibre-glass reinforced |
| Colour (locking) | RAL 9005 (jet black) |
| Material flammability class acc. to UL 94 | V-0 |



Pushing Performance

Material properties

| | |
|--|-----------|
| Material flammability class acc. to UL 94 (locking levers) | V-0 |
| RoHS | compliant |
| ELV status | compliant |
| China RoHS | e |
| REACH Annex XVII substances | No |
| REACH ANNEX XIV substances | No |
| REACH SVHC substances | No |

Specifications and approvals

| | |
|----------------|-------------------------------|
| Specifications | IEC 61984 |
| | EN 45545-2 R22: HL1, HL2, HL3 |
| | EN 45545-2 R23: HL1, HL2, HL3 |
| | EN 45545-2 R24: HL1, HL2, HL3 |
| CE | Yes |

Commercial data

| | |
|--------------------------------|--|
| Packaging size | 1 |
| Net weight | 125 g |
| Country of origin | Germany |
| European customs tariff number | 85389099 |
| eCl@ss | 27440202 Shell for industrial connectors |