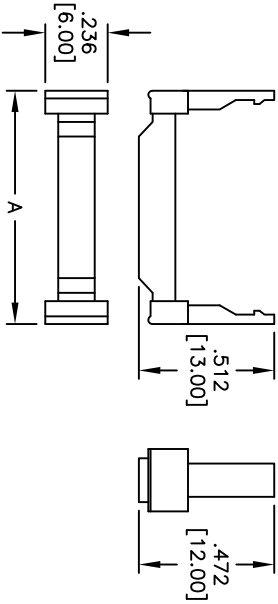
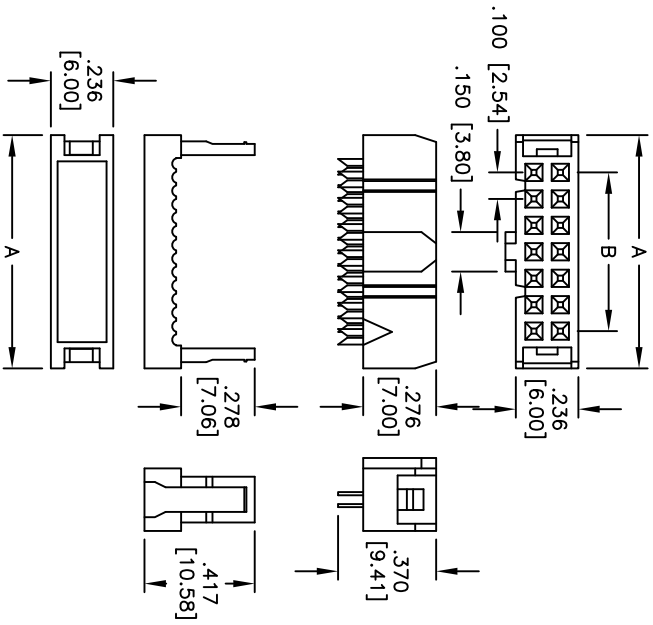


APPROVED: _____
 DATE: _____ TITLE: _____

| Rev | AWO # | Description | Date | Appr |
|-----|-------|----------------------|----------|------|
| - | | RELEASED | 6/3/05 | |
| A | | REDRAW & REVISED | 4/07/06 | |
| B | | REMOVE STRAIN RELIEF | 2/10/09 | |
| C | | REDRAWN | 11/23/10 | |



| Positions | A |
|-----------|---------------|
| 6 | .479 [12.16] |
| 8 | .580 [14.74] |
| 10 | .680 [17.27] |
| 12 | .781 [19.85] |
| 14 | .882 [22.40] |
| 16 | .982 [24.94] |
| 20 | 1.181 [30.00] |
| 24 | 1.382 [35.10] |
| 26 | 1.480 [37.59] |
| 30 | 1.680 [42.66] |
| 34 | 1.882 [47.80] |
| 36 | 1.980 [50.29] |
| 40 | 2.180 [55.37] |
| 44 | 2.384 [60.56] |
| 50 | 2.684 [68.18] |
| 56 | 2.982 [75.74] |
| 60 | 3.181 [80.80] |
| 62 | 3.281 [83.35] |
| 64 | 3.382 [85.90] |

Positions: 6 thru 16, 20, 24, 26, 30, 34, 36, 40, 44, 50, 56, 60, 62, & 64
 B = .100 [2.54] x No. of Spices per Row

SPECIFICATIONS:

Material: Insulator: PBT, glass reinforced, rated UL 94V-0
 Insulator color: Black
 Contacts: Copper alloy
 Plating: Gold flash over Nickel on contact area, Tin over Copper underplate on IDC area
 Electrical: Operating voltage: 250 VAC max.
 Current rating: 1 Amp max.
 Contact resistance: 20 mohms max. Initial
 Insulation resistance: 5,000 Mohms min @ 500 VDC.
 Dielectric withstanding voltage: 500 VAC for 1 minute
 Temperature Rating: Operating temperature: -40°C to +105°C
 Environmental: Lead free, RoHS compliant



ADAM TECH

909 Rahway Avenue, Union, NJ 07083
 Phone: 908-687-5000 Fax: 908-687-5710

Part No. FCS-XX-SG
 Title: .100 [2.54] FLAT CABLE IDC SOCKET
 STANDARD SINGLE WIPE CONTACTS

| | | | |
|--|-----------|-----------|--------|
| UNLESS OTHERWISE SPECIFIED ALL DIMENSIONS ARE INCHES [MM] TOLERANCES: EXCEPT AS NOTED INCHES | | HOLE SIZE | |
| .X | ± .10 | ØXX | ± .10 |
| .XX | ± .020 | ØXXX | ± .015 |
| .XXX | ± .015 | ØXXXX | ± .010 |
| APPROVALS | | DATE | |
| DRAWN | SS | 6/3/05 | |
| CHECKED | | | |
| APPROVED | | | |
| SIZE | PART NO. | REV. | |
| X | FCS-XX-SG | C | |
| REF: | S00087T | SCALE: | NIS |
| SHEET 1 OF 1 | | | |