

**PLEASE CHECK WWW.MOLEX.COM FOR LATEST PART INFORMATION**

**Part Number:** **5031493000**  
**Status:** **Active**  
**Overview:** clikmate wiretoboard connectors  
**Description:** 1.50mm (.059") Pitch CLIK-Mate™ Wire-to-Board Housing, Dual Row, Positive Lock, 30 Circuits

**Documents:**

[3D Model](#) [Product Specification PS-503154-001 \(PDF\)](#)  
[Drawing \(PDF\)](#) [RoHS Certificate of Compliance \(PDF\)](#)  
[Product Specification PS-503148-001 \(PDF\)](#)

**General**

Product Family Crimp Housings  
Series 503149  
Overview clikmate wiretoboard connectors  
Product Name CLIK-Mate™

**Physical**

Circuits (maximum) 30  
Color - Resin Beige  
Gender Plug  
Glow-Wire Compliant No  
Keying to Mating Part Yes  
Lock to Mating Part Yes  
Number of Rows 2  
Packaging Type Bag  
Panel Mount No  
Pitch - Mating Interface (in) 0.059 In  
Pitch - Mating Interface (mm) 1.50 mm  
Polarized to Mating Part Yes  
Stackable No  
Temperature Range - Operating -25°C to +85°C

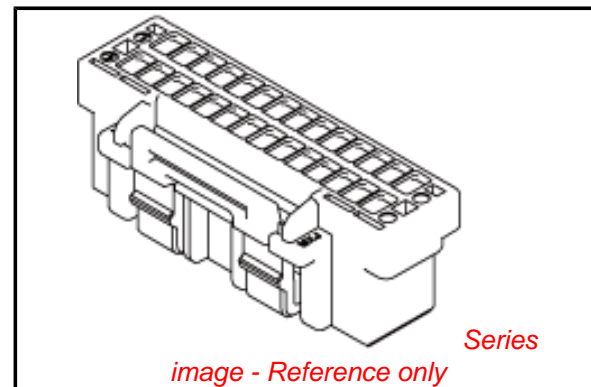
**Electrical**

Current - Maximum per Contact 2A

**Material Info**

**Reference - Drawing Numbers**

Application Specification AS-503149-001  
Packaging Specification SPK-503149-001  
Product Specification PS-503148-001, PS-503154-001, RPS-503148-001, RPS-503154-001, RPS-503154-002, RPS-503154-003, RPS-503154-004, RPS-503154-005, RPS-503154-007, RPS-503354-001  
Sales Drawing SD-503149-001



**EU RoHS**

**ELV and RoHS Compliant**  
**REACH SVHC**  
**Contains SVHC: No**  
**Halogen-Free**  
**Status**

**China RoHS**



**Need more information on product environmental compliance?**

Email [productcompliance@molex.com](mailto:productcompliance@molex.com)  
For a multiple part number RoHS Certificate of Compliance, [click here](#)

Please visit the [Contact Us](#) section for any non-product compliance questions.

**Search Parts in this Series**

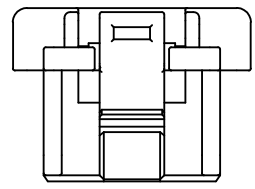
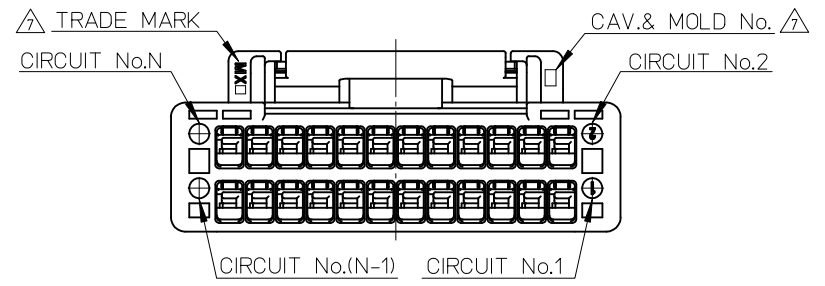
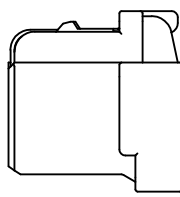
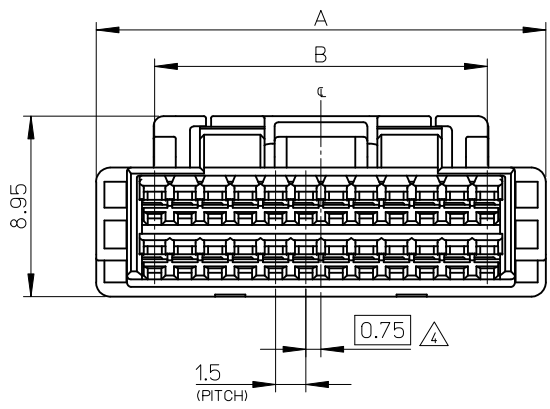
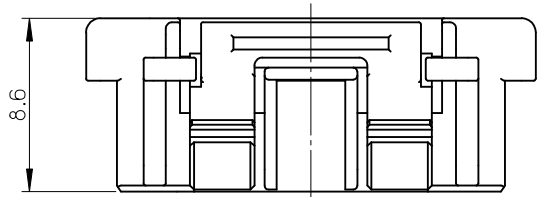
503149Series

**Mates With**

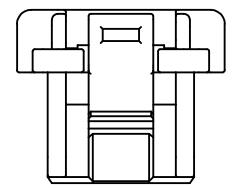
503154 PCB Receptacle

**Use With**

502579 Crimp Terminal



10CKTのロック形状  
FIGURE OF 10 CIRCUIT



8CKTのロック形状  
FIGURE OF 8 CIRCUIT

22.5	28.3	503149 - 320*	32
21.0	26.8	503149 - 300*	30
19.5	25.3	503149 - 280*	28
16.5	22.3	503149 - 240*	24
15.0	20.8	503149 - 220*	22
13.5	19.3	503149 - 200*	20
10.5	16.3	503149 - 160*	16
7.5	13.3	503149 - 120*	12
6.0	11.8	503149 - 100*	10
4.5	10.3	503149 - 080*	8
B	A	MATERIAL AND ORDER No. $\triangle$	CIRCUIT No.

REVISED EC NO: J2010-2056 DRWN: YG010 2010/02/04 CHKD: KASAKAWA 2010/04/16 APPR: NUKITA 2010/04/17	GENERAL TOLERANCES (UNLESS SPECIFIED)		DIMENSION STYLE	SCALE	DESIGN UNITS	THIRD ANGLE PROJECTION
			MM ONLY	4:1	METRIC	$\odot$ $\square$
	10 UNDER	$\pm 0.2$	DRAWN BY	DATE	TITLE	
	10 OVER 30 UNDER	$\pm 0.25$	T. HANYU	2008/1/8	1.5 W/B CONN. DUAL PLUG HOUSING	
	30 OVER	$\pm 0.3$	CHECKED BY	DATE	MOLEX INCORPORATED	
ANGULAR	$\pm 1^\circ$	K. ASAKAWA	2008/1/8	MATERIAL NO.	DOCUMENT NO.	SHEET NO.
DRAFT WHERE APPLICABLE MUST REMAIN WITHIN DIMENSIONS		APPROVED BY	DATE	SEE CHART		SD-503149-001
		Y0. ITO	2008/1/8	THIS DRAWING CONTAINS INFORMATION THAT IS PROPRIETARY TO MOLEX INCORPORATED AND SHOULD NOT BE USED WITHOUT WRITTEN PERMISSION		1 OF 2

NOTES

1. 材料 PBT UL94V-0  
MATERIAL
2. 嵌合相手: 503148, 503154 シリーズ  
MATE WITH: 503148, 503154 SERIES
3. 適合ターミナル: 502579, 503429 シリーズ  
APPLICABLE TERMINAL: 502579, 503429 SERIES

△ 極数/2=偶数極の場合に適用  
APPLY FOR (CIRCUIT/2=EVEN)

△ 製品番号  
MATERIAL No.

503149 - \*\*0\*

極数                      色  
CIRCUIT SIZE                      COLOR

COLOR	黒 BLACK	赤 RED	青 BLUE	緑 GREEN	ベージュ BEIGE (NATURAL)
COLOR No.	1	2	4	6	0

6. 本製品のプラスチック部に黒点・白点等が確認される場合や色合いが異なる場合がありますが、製品性能に問題はありません。  
THERE IS NO INFLUENCE IN THE PRODUCT PERFORMANCE THOUGH THE BLACK AND WHITE SPOT ETC. MIGHT BE CONFIRMED TO THE PLASTIC PART OF THIS PRODUCT AND THE SADE MIGHT BE DIFFERENT.

△ トレードマーク: MXプラス1文字の製造工場を示すアルファベットにて表示

但し"J"はJAPANを示す。(例: MXJ)  
キャビティー番号: 1桁から2桁の数字にて表示  
金型番号: アルファベット1文字にて表示

FORMED BY MA AND 1 MORE LETTER OF ALPHABET WHICH MEAN THE MANUFACTORY. BUT "J" MEANS JAPAN. (TO TRADE MARK) (e.g. MXJ) AND BY 1 - 2 DIGIT NUMBER (TO CAVITY No.) AND BY 1 LETTER OF ALPHABET (TO MOLD No.)

8. アプリケーション仕様書 (コネクタ取扱説明書): AS-503149-001  
APPLICATION SPECIFICATIONS (CONNECTOR MANUAL): AS-503149-001
9. 製品仕様書: PS-503148-001 / PS-503154-001  
PRODUCT SPECIFICATION: PS-503148-001 / PS-503154-001
10. ELV及びRoHS適合品  
ELV AND RoHS COMPLIANT

REVISED EC NO: J2010-2056 DRWN: YGOTO 2010/02/04 CHKD: KASAKAWA 2010/04/16 APPR: NUKITA 2010/04/17	GENERAL TOLERANCES (UNLESS SPECIFIED)		DIMENSION STYLE MM ONLY	SCALE 1:1	DESIGN UNITS METRIC	THIRD ANGLE PROJECTION
	10 UNDER	±0.2	DRAWN BY T. HANYU	DATE 2008/1/8	TITLE 1.5 W/B CONN. DUAL PLUG HOUSING	
	10 OVER 30 UNDER	±0.25	CHECKED BY K. ASAKAWA	DATE 2008/1/8	MOLEX INCORPORATED	
	30 OVER	±0.3	APPROVED BY YU. ITO	DATE 2008/1/8	MATERIAL NO. SD-503149-001	SHEET NO. 2 OF 2
	ANGULAR ±1 °	DRAFT WHERE APPLICABLE MUST REMAIN WITHIN DIMENSIONS	SEE CHART	THIS DRAWING CONTAINS INFORMATION THAT IS PROPRIETARY TO MOLEX INCORPORATED AND SHOULD NOT BE USED WITHOUT WRITTEN PERMISSION		