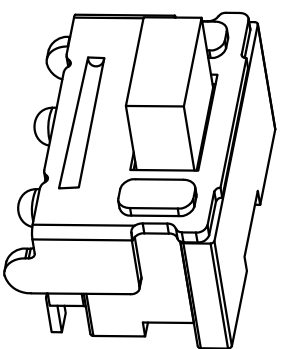


CIRCUIT DIAGRAM



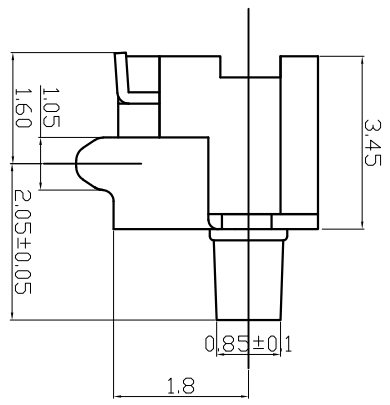
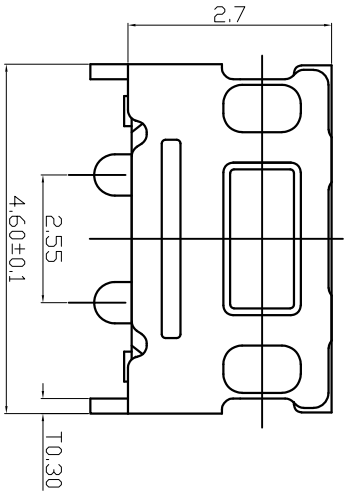
GT-TA022X-HXXX-LX

G-SWITCH

Operating Force
A=160gf
B=250gf

Switch Height (mm)
H035=3.5mm

Switch lifetime (Force)
L1=100,000 Cycles



G-Switch Specification:
 Operating temperature range: -30°C to +85°C
 Rating: 50mA, 12V DC
 Insulation resistance: 100MΩ min, 100V DC
 Dielectric strength: 250V AC for 1 min
 Contact resistance: 100mΩ max.
 Travel: 0.15±0.05mm



G-Switch Electronic (HongKong) CO., Ltd.



ROHS
Compliant
2002/95/EC



Halogen Free

Unless otherwise specified, Tolerance:	
X	±0.30
X.X	±0.20
X.XX	±0.15
X.XXX	±0.10
Angles	±3

DESIGN	Bengfengchen	DATE	2019.05.29	Mold code:	
CHECKED		DATE			
APPROVED		DATE			
http://www.dg-switch.com				REV.: X1	SCALE: 4:1
TEL: 0769-82388879		SIZE: A4	SHEET: 1/1	UNIT: mm	

GT-TA022X-HXXX-LX