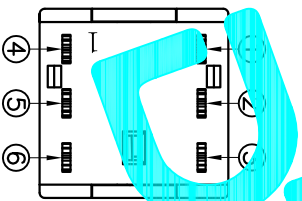
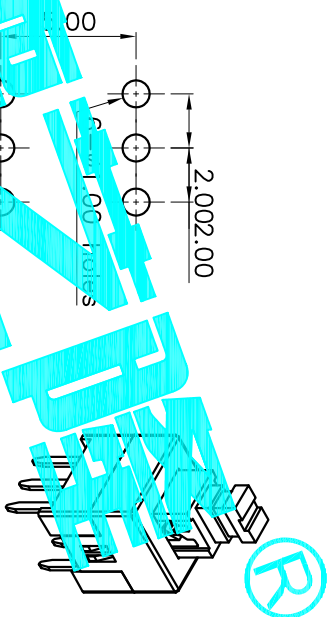
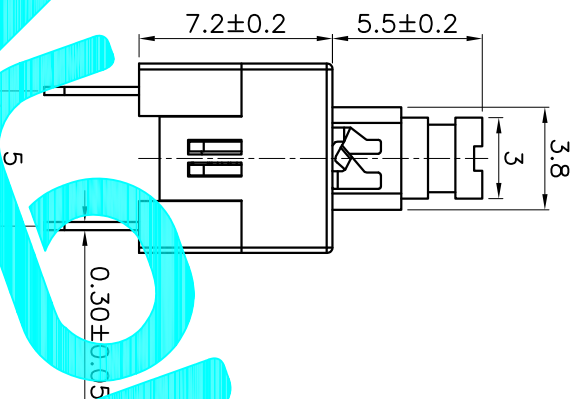
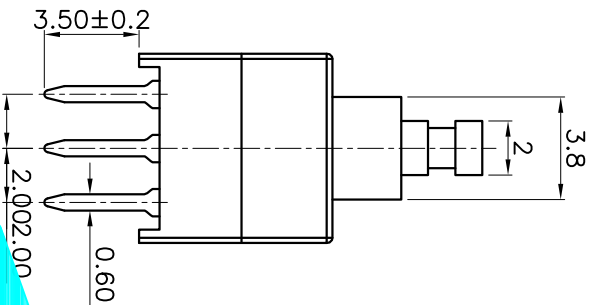
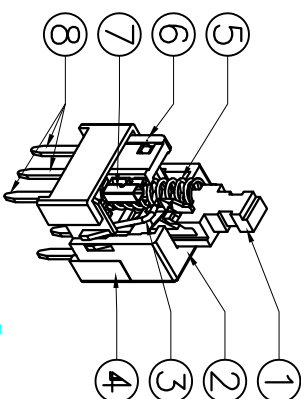


NOTE:
 1. Operating Force: 230gf±50gf
 2. Travel : 2.4±0.2mm
 Push To Lock



Circuit Diagram

ITEM	PART NAME	QTY.	MATERIAL	FINISHING
⑧	Terminal	6	Brass strip	Plating silver
⑦	Contact	2	Phosphor bronze	Plating silver
⑥	Securing glue	2	PA66	Black
⑤	Spring	1	SUS	Natural
④	Base	1	PBT	Black
③	Crochet Needle	1	SUS	Natural
②	Cover	1	POM	White
①	Knob	1	POM	Blue

APPROVALS		DATE	TITLE:		PART NO.	SCALE:	SHEET
DRAWN	G.M.Chen	2015/4/16	ELECTRONICS CO.,LTD		PB-22E70	1:1	1 OF 1
CHECKED			PUSH SWITCH				
APPROVALS			PB-22E70				
TOLERANCES ARE		30 ^{±0.15}	±0.30	ANGLE	UNIT: mm	SCALE: 1:1	SHEET 1 OF 1
		10 ^{±0.10}	±0.20		DRAWING NO.		PROJ.
		5 ^{±0.10}	±0.10				
ECN NO.	REV.	DATE.	DESCRIPTION.		CHANGE.	CHECK.	APPRO.
	A		NEW				