

# SUP-BR-E SERIES



Safety Agency : Standard	File No.
UL : UL-1283	E78644

## Features

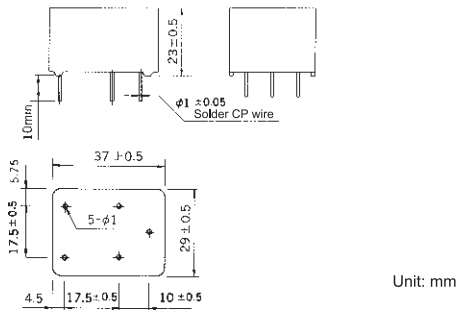
- High attenuation in MF and HF bands.
- PCB mounting with wire leads.
- Compact size.
- Case material rated UL94-VO.

## Applications

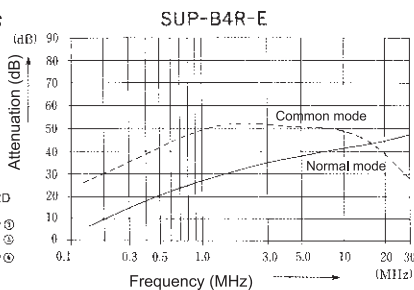
- Game machines and Control systems.
- SUP-B□R-E Series



### Dimensions



### Static characteristics



### Circuit



# SUP-CG-E SERIES

# NOISE FILTER



Safety Agency : Standard	File No.
UL : UL-1283	E78644

## Features

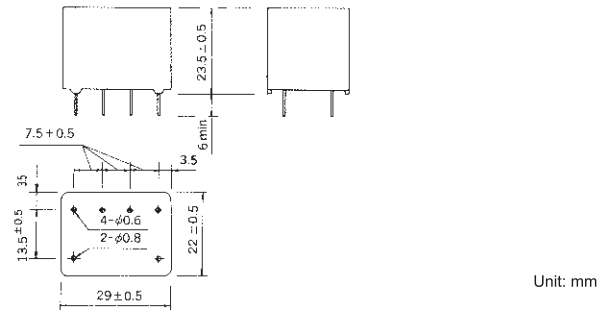
- High attenuation in MF and HF bands.
- PCB mounting with wire leads.
- Compact size.
- Case material rated UL94-VO.

## Applications

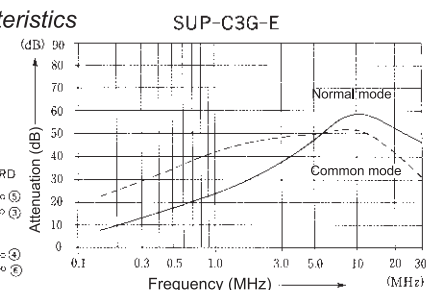
- Game machines and Control systems.
- SUP-C□G-E Series



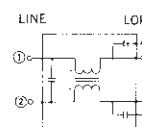
### Dimensions



### Static characteristics



### Circuit



## Electrical Specifications

Rated Voltage **250VAC**

Safety Agency	Model Number	Rated Current (A)	Test Voltage	Insulation Resistance	Leakage Current (max)	Voltage Drop (max)	Temperature Rise (max)	Operating Temperature (°C)	Insertion losses	
									Normal Mode (MHz)	Common Mode (MHz)
UL	SUP-B2R-E	2	Line to Line 1000Vrms 50/60Hz 60sec Line to Ground 1500Vrms 50/60Hz 60sec	Line to Line 1000MΩmin Line to Ground 1000MΩmin (at 500VDC)	1.0mA (at 250Vrms 60Hz)	1.0Vrms  0.6Vrms  0.6Vrms	20deg  30deg  30deg	-20 ~ +65  -20 ~ +55  -20 ~ +55	0.9 ~ 10	0.4 ~ 10
	SUP-B4R-E	4							1.5 ~ 10	0.7 ~ 10
	SUP-B6R-E	6							2.0 ~ 10	2.0 ~ 10
	SUP-C3G-E	3							2.0 ~ 30	1.0 ~ 10
	SUP-C6G-E	6							4.0 ~ 30	*1.5 ~ 20

Guaranteed attenuation is more than 25dB in normal mode and more than 30dB in common mode. (\*more than 25dB)