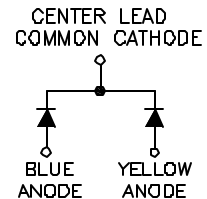
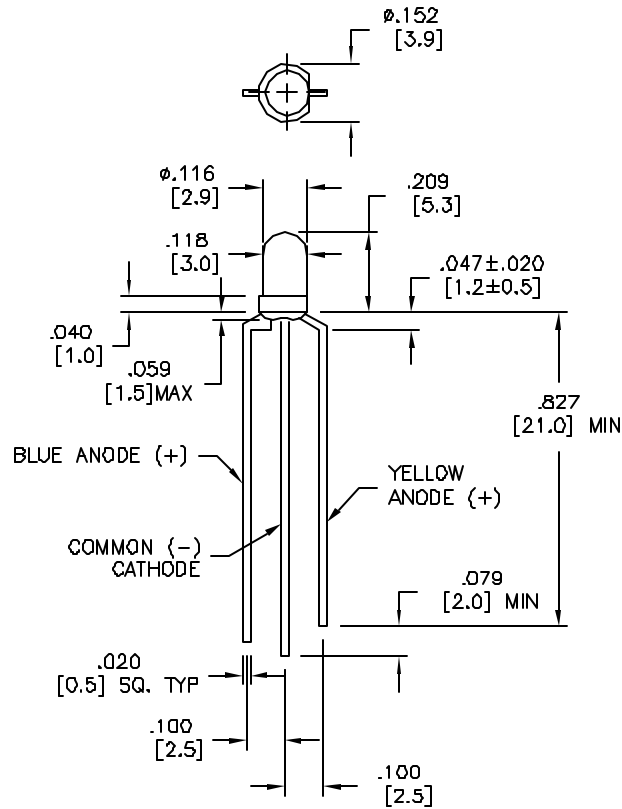


LTR	REVISION	DATE	APPD
-	RELEASED	01-20-05	



NOTES:

1. ALL DIMS ARE IN INCHES (MILLIMETERS).
2. TOLERANCE IS  $\pm 0.010"$  ( $\pm 0.25\text{mm}$ ) UNLESS OTHERWISE SPECIFIED.
3. LEAD SPACING IS MEASURED WHERE LEADS EMERGE FROM THE PACKAGE.
4. LEADS TO BE SOLDERABLE AND CAPABLE OF MEETING THE SOLDERABILITY REQUIREMENTS OF MIL-STD-202, METHOD 208.
5. MANUFACTURE DATE SHALL NOT BE OLDER THAN 26 WEEKS (6 MONTHS).

LEDTRONICS PART NO.	L.E.D. RADIATION COLOR	L.E.D. APPEARANCE	ABSOLUTE MAXIMUM RATINGS ( $T_a=25^\circ\text{C}$ )					ELECTRO-OPTICAL CHARACTERISTICS ( $T_a=25^\circ\text{C}$ )							
			Pd mW	I <sub>fp</sub> <sup>a</sup> mA	I <sub>f</sub> mA	V <sub>r</sub> V	T <sub>opr</sub> (°C)	I <sub>f</sub> mA	I <sub>v</sub> med typ	V <sub>f</sub> =V typ/max	VIEW ANGLE 2θ/2	I <sub>r</sub> max μA	Δλ nm	λ <sub>0.001</sub> nm	λ <sub>Peak</sub> nm
L120TWPB1KY4-3C	SUPER BLUE	WHITE DIFFUSED	120	150	30	5	-40 TO +80	20	250	3.5/4.0	40	100	30	473	470
	YELLOW		80	150	30	5	-40 TO +80	20	20	2.0/2.6	40	100	15	589	585

Tstg: -40°C TO +85°C \*Condition for I<sub>fp</sub> is pulse of 1/10 duty and 0.1msec width.  
LEAD SOLDERING TEMP: [1.6mm (.063in) FROM BODY] 260°C FOR 5 SEC.

<p>LEDTRONICS, INC. 23105 KASHIWA COURT TORRANCE, CA 90505</p>	PROPRIETARY. This document contains Proprietary Information of LEDTRONICS, INC. It may not be copied, used or disclosed for any purpose without the prior express written consent of LEDTRONICS, INC.		<b>TITLE</b> L120TWPB1KY4-3C			
	<b>DWG NO</b> DSDD0150	<b>SCALE</b> 2:1	<b>SHEET</b> 1 OF 1	<b>DATE</b> 01-20-05		
	<b>CODE IDENT NO.</b> 8Z410	<b>DWG BY</b> RM	<b>CHK BY</b> PL	<b>QA</b> GZ	<b>MFG</b> 02-15-05	<b>CUSTOMER</b> 02-15-05