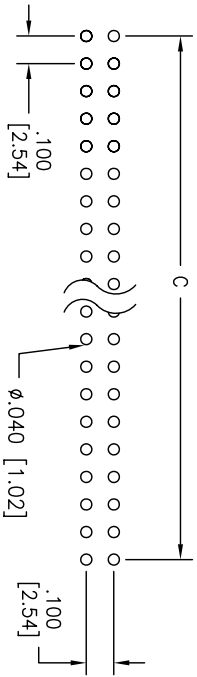
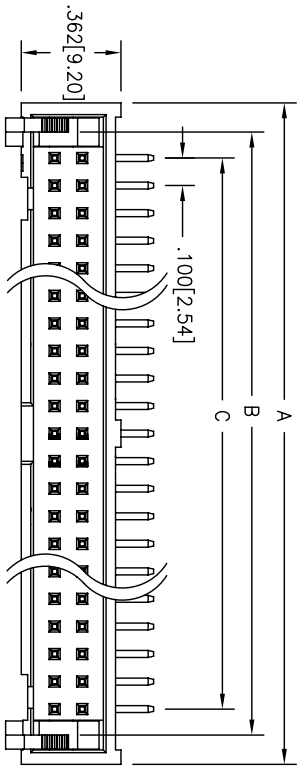
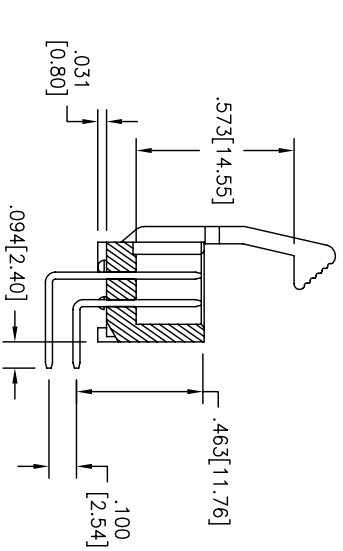
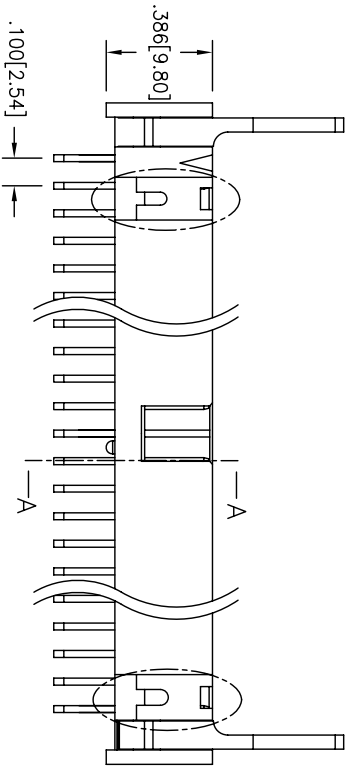


APPROVED: _____
 DATE: _____ TITLE: _____

Rev	AWO #	Description	Date	Appr
-		RELEASED	10/7/05	
A		REDRAWING	4/08/08	



RECOMMENDED PCB LAYOUT



SECTION A-A

A = .100 [2.54] X No. of Positions / 2 + .300 [7.62]
 B = .100 [2.54] X No. of Positions / 2 + .088 [2.24]
 C = .100 [2.54] X No. of Positions / 2 - .100 [2.54]

SPECIFICATION:
Material:
 Insulator: PBT, glass reinforced, rated UL-94V-0
 Insulator Color: Black
 Contacts: Phosphor Bronze or Brass
Contact Plating:
 Gold Flash over Nickel underplate on mating area, Tin over Copper underplate on solder tails
Electrical:
 Operating Voltage: 250V AC max.
 Current rating: 2 Amps max.
 Contact resistance: 30 mohms max
 Insulation resistance: 3000 Mohms min
 Dielectric withstanding voltage: 500 VAC / minute
Mechanical:
 Mating durability: 500 cycles min.
Temperature Rating:
 Operating temperature: -40° TO +105°
 Environmental:
 Lead free, RoHS compliant.
 Recommended soldering temp: 235 for 5 sec.

Environmental:
 Lead free, RoHS compliant.
 Recommended soldering temp: 235 for 5 sec.

Operating Voltage: 250V AC max.
Current rating: 2 Amps max.
Contact resistance: 30 mohms max
Insulation resistance: 3000 Mohms min
Dielectric withstanding voltage: 500 VAC / minute
Mating durability: 500 cycles min.
Temperature Rating:
 Operating temperature: -40° TO +105°
 Environmental:
 Lead free, RoHS compliant.
 Recommended soldering temp: 235 for 5 sec.



UNLESS OTHERWISE SPECIFIED
 ALL DIMENSIONS ARE INCHES [MM]
 TOLERANCES: EXCEPT AS NOTED
 INCHES HOLES
 X .10 ± .015
 .XX ± .020 ØXXX ± .015
 .XXX ± .015 ØXXX ± .010

ADAM TECH
 909 Railway Avenue, Union, NJ 07083
 Phone: 908-687-5000 Fax: 908-687-5710

APPROVALS	DATE	TITLE	SIZE	PART NO.	REV.
DRAWN	SS	10/7/05	X	BHR-XX-HSGA-LL	A
CHECKED					
APPROVED					

BOX HEADER, HORIZONTAL PCB MOUNT,
 2 ROW .100 PITCH, SEL GOLD PLATED

REF: _____ SCALE: NTS SHEET 1 OF 1