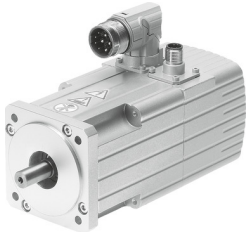


# Servo motor EMMS-AS-70-S-LS-RS

Part number: 550114

FESTO



## Data sheet

| Feature                                    | Value  |
|--|--|
| Number of pole pairs                       | 4  |
| Type code                                  | EMMS-AS  |
| Rotor position sensor                      | Absolute encoder, single-turn                              |
| Rotor position sensor interface            | EnDat® 22  |
| Rotor position sensor measuring principle  | Inductive  |
| Temperature monitoring                     | PTC resistor   |
| Max. rotational speed                      | 6450 1/min   |
| Nominal rotary speed                       | 5300 1/min   |
| Insulation protection class                | F  |
| Motor constants                            | 0.647 Nm/A   |
| Motor nominal power                        | 866 W  |
| DC nominal voltage                         | 360 V  |
| Motor nominal current                      | 2.2 A  |
| Rotor position sensor resolution           | 18 bit   |
| Phase-phase winding resistance             | 7.66 Ohm   |
| Winding inductance phase-phase             | 14.5 mH  |
| Type of winding switch                     | Star inside  |
| Peak current                               | 5 A  |
| Voltage constant, phase-to-phase           | 39.47 mVmin  |
| Rating class according to EN 60034-1       | S1   |
| CE marking (see declaration of conformity) | As per EU EMC directive<br>As per EU low voltage directive |
| Corrosion resistance class (CRC)           | 2 - Moderate corrosion stress                              |
| Storage temperature                        | -20 °C ... 60 °C   |
| Relative air humidity                      | 0 - 90 %   |
| Degree of protection                       | IP54   |
| Ambient temperature                        | -10 °C ... 40 °C   |
| Certification                              | RCM compliance mark<br>c UL us - Recognized (OL)           |
| Total output inertia moment                | 0.379 kgcm <sup>2</sup>                                    |
| Nominal torque                             | 1.43 Nm  |
| Peak torque                                | 3.1 Nm   |
| Stall torque                               | 1.64 Nm  |
| Permissible axial shaft load               | 75 N   |
| Permissible radial shaft load              | 150 N  |
| MTTF, subcomponent                         | 76 years, rotor position sensor                            |

| <b>Feature</b>                   | <b>Value</b>                     |
|----------------------------------|----------------------------------|
| MTTFd, subcomponent              | 152 years, rotor position sensor |
| Product weight                   | 2100 g                           |
| Electrical connection technology | Plug                             |
| Note on materials                | RoHS-compliant                   |
| Conforms to standard             | IEC 60034                        |