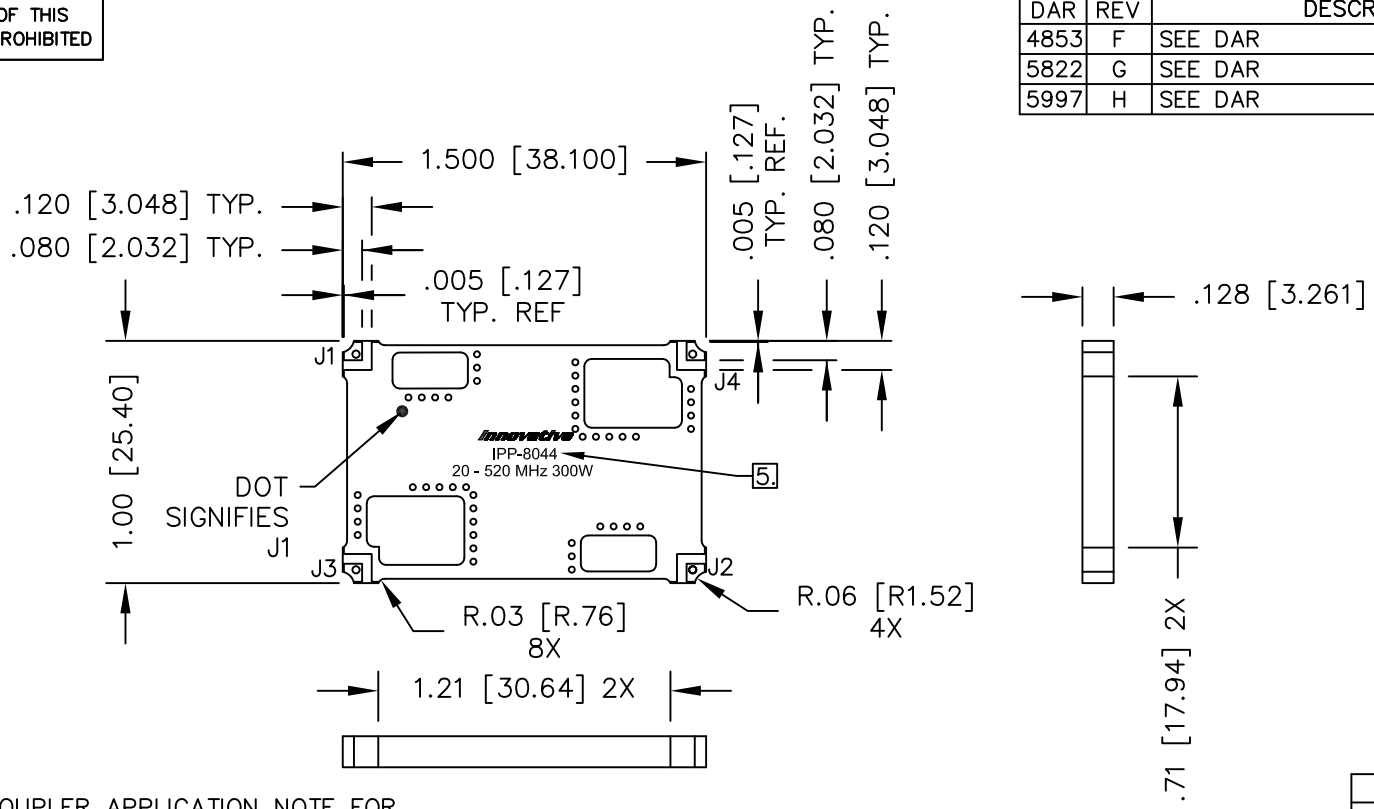


UNAUTHORIZED USE OF THIS
DRAWING IS STRICTLY PROHIBITED

DAR	REV	DESCRIPTION	APPVD	DATE
4853	F	SEE DAR	DG	3-14
5822	G	SEE DAR	DG	10-15
5997	H	SEE DAR	DG	2-16



- NOTES:**
- SEE SMD COUPLER APPLICATION NOTE FOR FURTHER INFORMATION.
 - PARTS WITH RoHS TIN FINISH ARE RoHS COMPLIANT.
 - AVAILABLE IN TAPE AND REEL. SEE SMD COUPLER APPLICATION NOTE FOR FURTHER INFORMATION.
 - DO NOT EXCEED 220°C WHEN INSTALLING COUPLER.
 - SEE CHART FOR PART NUMBER AND FINISH.

ELECTRICAL SPECIFICATIONS

FREQUENCY: 20 - 520 MHz.
 INSERTION LOSS: <0.25 dB
 MAIN LINE VSWR: <1.25:1
 DIRECTIVITY: >20dB
 COUPLING: 50.0±1dB
 COUPLED FLATNESS: ±0.6dB
 POWER: 300 WATT
 TEMPERATURE: -55°C TO 85°C

FINISH	
P/N	TYPE
IPP-8044	TIN/LEAD
IPP-8044RT	RoHS MATTE TIN

PORT CONFIGURATION			
INPUT	OUTPUT	FORWARD COUPLED	REFLECTED COUPLED
J1	J2	J3	J4
J2	J1	J4	J3

MATERIAL	DWN DG	DATE 11-10	Innovative Power Products		
FINISH SEE FINISH CHART	ENG TJD	DATE 11-10			
TOLERANCE	MANUF	DATE	TITLE OUTLINE		
IN [MM]	CAGE CODE: 437R2		SMD COUPLER, DDC, 20 - 520 MHz. 300W		
.XX ±.02 [.50] .XXX ±.010 [.254] ANG. ±1/2°	SHEET 1 OF 1	SCALE 2:1	SIZE B	P/N IPP-8044*	REV. H