

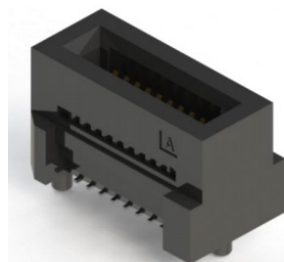
370/371 SERIES



High Speed Card Edge Connectors

Features:

- SMT 0.8mm Pitch
- High density for space saving
- Insertion Loss : Differential pair signaling 21Gbps@<-3dB
- Available in 20, 100, 180 & 200 contacts
- Height : 7.8 mm
- SAS 3.0 & PCIe 3.0 compliant
- Application : IPC, Server, Data Storage



Specifications:

Insulator Material	High Temperature Thermoplastic UL-94V-0
Contact Material & Shield Material	Copper Alloy
Contact Plating	Gold Flash Plating
Current Rating	3.1 amps/Pin
Contact Resistance	Initial: 15 milliohms maximum After Test: ΔR 5 milliohms
Dielectric Withstanding Voltage	750 V AC for 60s
Insulation Resistance	1000 megaohms minimum
Operating Temperature	-55°C to +125°C
Insertion Force	0.63 N / Per Pair maximum
Withdrawal Force	0.06 N / Per Pair minimum

Part Number:	No. of Contacts:	Photo:	Key:	Latch:
370-020-229-102	20		No	No
370-100-229-002	100		Yes	No
371-100-529-002	100		Yes	Yes
371-180-529-002	180		Yes	Yes
370-200-229-002	200		Yes	No