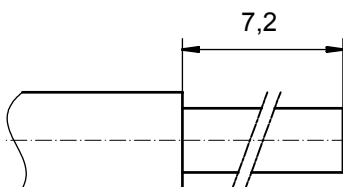


**STRIPPING DIMENSIONS**



Directive 2002/95/EC  
„RoHS“  
Compliant

**NOTES:**

CRIMPING:  
USE CRIMP TOOL: 360X10409X  
WITH TOOL INSERT: 36-000060  
SELECTOR SETTINGS: 5 FOR AWG 12  
4 FOR AWG 14

3	1	REAR SIDE	COPPER ALLOY	min. 8µin HARD GOLD over min. 50µin NICKEL
2	1	RETAINING RING	COPPER ALLOY	NICKEL PLATED
1	1	MATING SIDE	COPPER ALLOY	min. 30µin HARD GOLD over min. 50µin NICKEL
item	quantity	part description	material	plating

partlist

APPROVAL # FREIGABE # DEBLOCAGE # AUTORIZACION # APPROVAL	
CUSTOMER APPROVAL DATE:	
NAME:	TITLE:
COMPANY NAME:	
APPROVAL # FREIGABE # DEBLOCAGE # AUTORIZACION # APPROVAL	

THIS DRAWING MAY NOT BE COPIED OR REPRODUCED IN ANY WAY, AND MAY NOT BE PASSED ON TO A THIRD PARTY WITHOUT WRITTEN PERMISSION. OWNERSHIP AND COPYRIGHT OF CONEC GmbH DO NOT ALTER CAD DRAWING BY HAND				tolerance ISO 2768-m	 dim. in mm	scale: 8:1
				material: see partlist		
date	name	<b>HIGH POWER CONTACT FEMALE</b> CRIMP VERSION 20A D-SUB COMBINATION				
drawn	03.01.08 Schmidt					
appd.	03.01.08 Koch					
norm	d-old					
a	Origin	dwg no:	Inventor 10	DIN-A3		
rev.	description	date	name	sh: 1		
<b>CONEC</b> ®				part no:	13-000301	