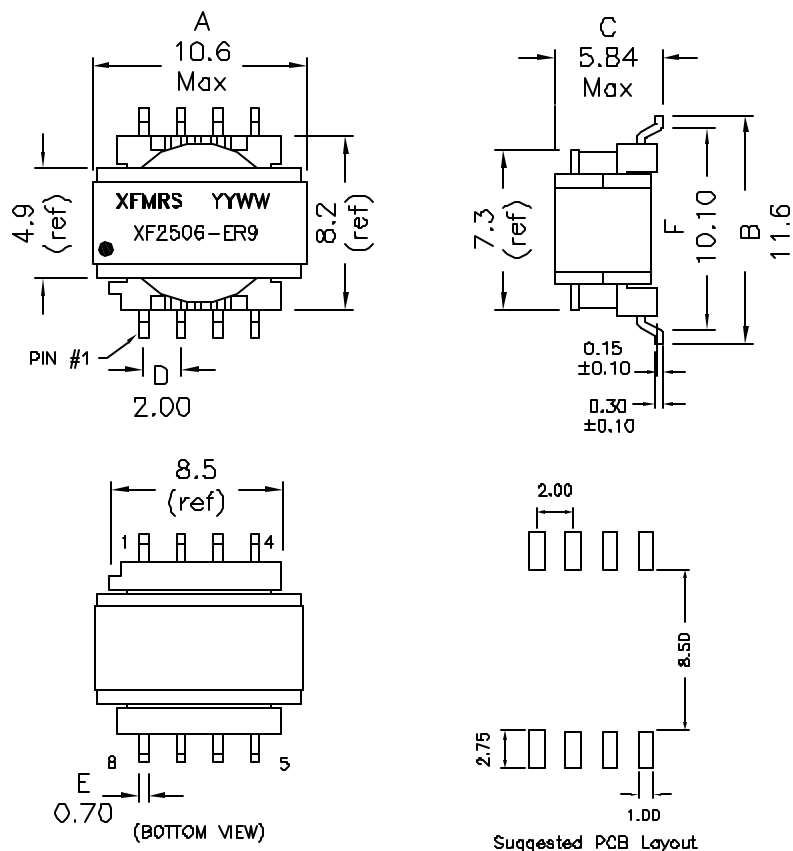
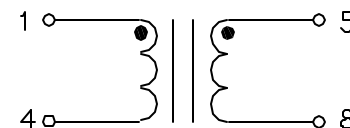


1. Mechanical Dimensions:



2. Schematic:



3. Electrical Specifications:

- OCL: Pins 1-4 250uH Typ @192KHz 0.1V
- LL: Pins 1-4 0.160uH Typ @100KHz 0.1V (short 5-8)
- Cw/w: Pins 1-8 4pF Typ @100KHz 0.1V
- E-T: 35V-uS Typ
- DCR: Pins 1-4 0.115 Ohms Max
- DCR: Pins 5-8 0.800 Ohms Max
- Turns Ratio: Pins (1-4):(5-8)=1:2±1%
- Isolation: 500Vac, Wdg to Wdg, All Wdgs to Core

Notes:

1. Solderability: Leads shall meet MIL-STD-202G, Method 208H for solderability.
2. Flammability: UL94V-0
3. ASTM oxygen index: > 28%
4. Insulation System: Class F 155°C, UL file E151556
5. Operating Temperature Range: All listed parameters are to be within tolerance from -40°C to +85°C
6. Storage Temperature Range: -55°C to +125°C
7. Aqueous wash compatible
8. SMD Lead Coplanarity: ±0.004*(0.102mm)
9. Electrical and mechanical specifications 100% tested
10. RoHS Compliant Component

DOC REV: A/3

PROPRIETARY Document is the property of XFMR5 Group & is not allowed to be duplicated without authorization.

XFMR5 Inc www.XFMR5.com	Title: 192KHz Xfmr		
UNLESS OTHERWISE SPECIFIED TOLERANCES: .xx ±0.25 Dimensions in MM	P/N: XF2506-ER9	REV. A	
	DWN.	Juan Mao	Jul-05-06
SCALE 4:1 SHT 1 OF 1	CHK.	YK Liao	Jul-05-06
	APP.	Joe Huff	Jul-05-06