

**PLEASE CHECK WWW.MOLEX.COM FOR LATEST PART INFORMATION**

**Part Number:** [0010441051](#)  
**Status:** **Active**  
**Overview:** [kk](#)  
**Description:** 5.08mm (.200") Pitch KK® Header, Vertical, with Polarizing Backwall, 5 Circuits, Gold (Au) Plating

**Documents:**

[3D Model](#) [RoHS Certificate of Compliance \(PDF\)](#)  
[Drawing \(PDF\)](#)

**General**

|                |                      |
|----------------|----------------------|
| Product Family | PCB Headers          |
| Series         | <a href="#">2599</a> |
| Application    | Wire-to-Board        |
| Overview       | <a href="#">kk</a>   |
| Product Name   | KK®                  |

**Physical**

|                                |              |
|--------------------------------|--------------|
| Breakaway                      | No           |
| Circuits (Loaded)              | 5            |
| Circuits (maximum)             | 5            |
| Color - Resin                  | Natural      |
| Durability (mating cycles max) | 50           |
| First Mate / Last Break        | No           |
| Glow-Wire Compliant            | No           |
| Guide to Mating Part           | No           |
| Keying to Mating Part          | None         |
| Lock to Mating Part            | None         |
| Material - Metal               | Brass        |
| Material - Plating Mating      | Gold         |
| Material - Plating Termination | Nickel       |
| Material - Resin               | Nylon        |
| Number of Rows                 | 1            |
| Orientation                    | Vertical     |
| PC Tail Length (in)            | 0.175 In     |
| PC Tail Length (mm)            | 4.45 mm      |
| PCB Retention                  | None         |
| PCB Thickness Recommended (in) | 0.062 In     |
| PCB Thickness Recommended (mm) | 1.60 mm      |
| Packaging Type                 | Bag          |
| Pitch - Mating Interface (in)  | 0.200 In     |
| Pitch - Mating Interface (mm)  | 5.08 mm      |
| Shrouded                       | Partial      |
| Stackable                      | Yes          |
| Surface Mount Compatible (SMC) | No           |
| Temperature Range - Operating  | 0°C to +75°C |
| Termination Interface: Style   | Through Hole |

**Electrical**

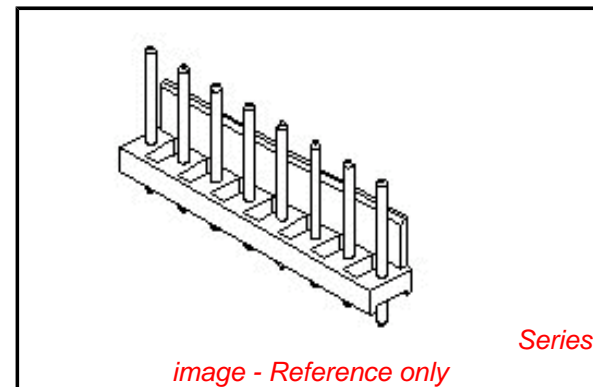
|                               |      |
|-------------------------------|------|
| Current - Maximum per Contact | 7A   |
| Voltage - Maximum             | 250V |

**Material Info**

|                 |           |
|-----------------|-----------|
| Old Part Number | 2599-05AG |
|-----------------|-----------|

**Reference - Drawing Numbers**

|               |              |
|---------------|--------------|
| Sales Drawing | SDA-2599-NAG |
|---------------|--------------|



**EU RoHS** **China RoHS**

**Compliance Status**

**Not Reviewed**

**REACH SVHC**

**Not Reviewed**

**Halogen-Free**

**Status**

**Not Reviewed**

**Need more information on product environmental compliance?**

Email [productcompliance@molex.com](mailto:productcompliance@molex.com)  
 For a multiple part number RoHS Certificate of Compliance, [click here](#)

Please visit the [Contact Us](#) section for any non-product compliance questions.

**Search Parts in this Series**

[2599Series](#)

**Mates With**

KK® Crimp Terminal Housing [3001](#) , [5058](#)

This document was generated on 05/24/2010

**PLEASE CHECK [WWW.MOLEX.COM](http://WWW.MOLEX.COM) FOR LATEST PART INFORMATION**

A-2599-NAG  
 PART NO  
 SEE CHART  
 COMP COMP  
 LOG UPDATE  
 REV A  
 9-12-80  
 10-1-80

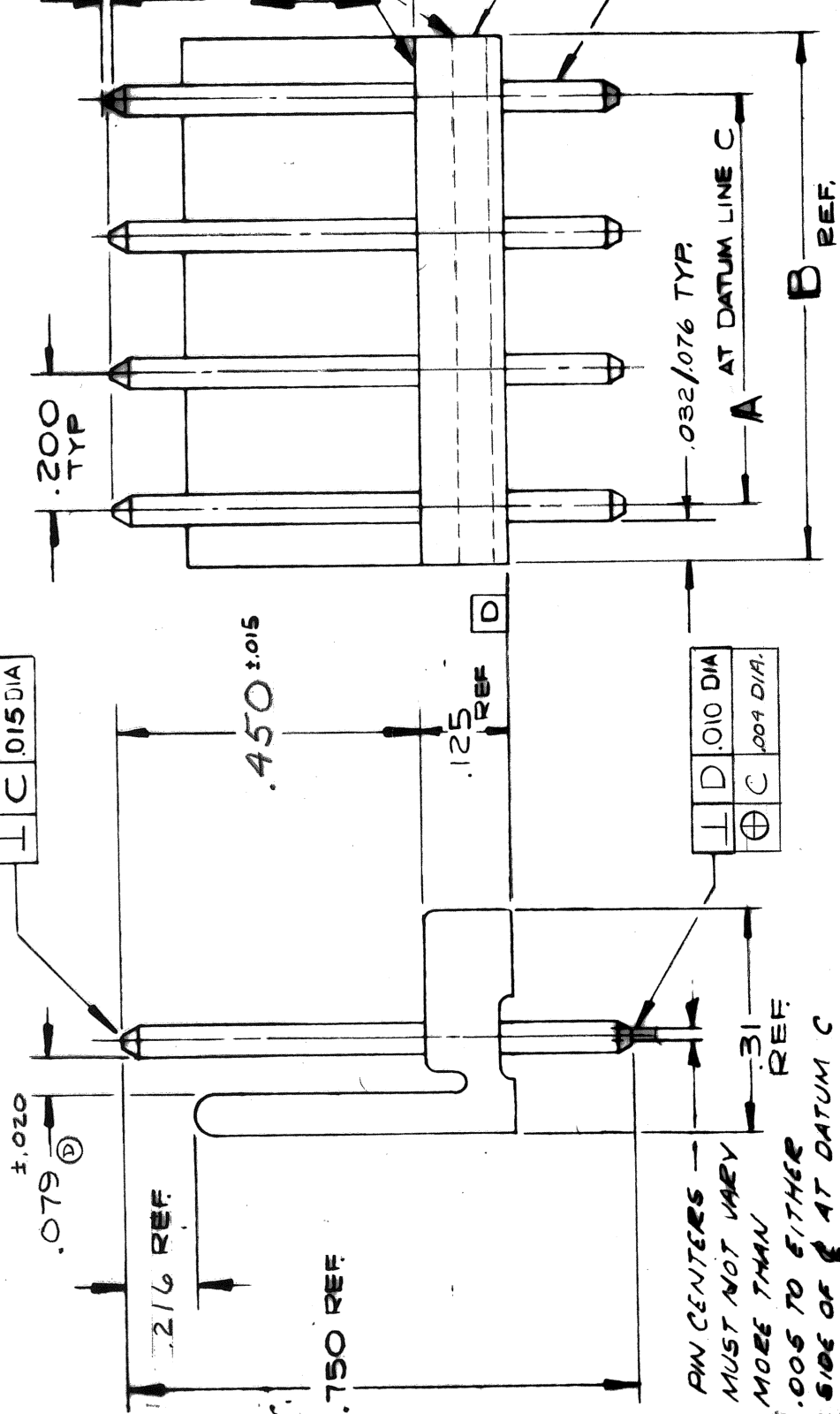
RELATIVE PIN HEIGHTS MUST NOT VARY MORE THAN .005 T.I.R.

SEE NOTE 2

.015 MAX. SAW BURR PERMITTED ON TOP & SIDE EDGES - BOTH ENDS

(N<sup>o</sup> 2403) (WAFER)

.045 DIA. PIN, BRASS  
 2173-1G  
 PLATING PER ENG.  
 STD. 88-501.



PIN CENTERS MUST NOT VARY MORE THAN .005 TO EITHER SIDE OF C AT DATUM C

NOTES

- 1 PIN PUSH OUT FORCE: 3 LBS. MIN.
- 2 BURRS NOT TO EXTEND BELOW SURFACE  $\square$
- 3 PIN MUST CONFORM TO MOLEX SOLDERABILITY SPEC. NO. 152 AFTER PLATING.

| PART N <sup>o</sup> | ENG N <sup>o</sup> | N <sup>o</sup> OF CIRCUITS | DIM. A      | DIM. B      |
|---------------------|--------------------|----------------------------|-------------|-------------|
| 10-44-1181          | A-2599-18AG        | 18                         | 3400 ± .008 | 3605 / 3501 |
| 10-44-1171          | -17                | 17                         | 3200 ± .008 | 3405 / 3301 |
| 10-44-1161          | -16                | 16                         | 3000 ± .007 | 3204 / 3102 |
| 10-44-1151          | -15                | 15                         | 2800 ± .007 | 3004 / 2902 |
| 10-44-1141          | -14                | 14                         | 2600 ± .007 | 2804 / 2702 |
| 10-44-1131          | -13                | 13                         | 2400 ± .006 | 2603 / 2503 |
| 10-44-1121          | -12                | 12                         | 2200 ± .006 | 2403 / 2303 |
| 10-44-1111          | -11                | 11                         | 2000 ± .006 | 2203 / 2103 |
| 10-44-1101          | -10                | 10                         | 1800 ± .005 | 2002 / 1904 |
| 10-44-1091          | -9                 | 9                          | 1600 ± .005 | 1802 / 1704 |
| 10-44-1081          | -8                 | 8                          | 1400 ± .004 | 1601 / 1505 |
| 10-44-1071          | -7                 | 7                          | 1200 ± .004 | 1401 / 1305 |
| 10-44-1061          | -6                 | 6                          | 1000 ± .004 | 1201 / 1105 |
| 10-44-1051          | -5                 | 5                          | 800 ± .003  | 1000 / 906  |
| 10-44-1041          | -4                 | 4                          | 600 ± .003  | 800 / 706   |
| 10-44-1031          | -3                 | 3                          | 400 ± .002  | 599 / 507   |
| 10-44-1021          | A-2599-2AG         | 2                          | 200 ± .002  | 399 / 307   |

WAFER MATL: NYLON, PER ENG. STD. 1289.1 .200 CENTER DIA.

| REV | DESCRIPTION                                      | DATE     |
|-----|--|----------|
| F   | FIN. REL. -18, -17, -16, -15, -14, -13, -10, JRT | 12-20-84 |
| E   | ERD 19759  |          |
| D   | ECOS255<br>K5 S-26-81 GFL                        |          |
| C   | ERD 13083<br>K5 S-2-81 GFL                       |          |
| B   | FINAL REL. 2599-8/16<br>10-27-80 K5 S            |          |
| A   | ERD NO. 12558<br>9-26-80 JMK GFL                 |          |
| -   | X-RELEASE<br>ERD NO. 12481<br>9-12-80 GFL        |          |

MOLEX PRODUCING WAFER ASSEMBLY  
 MOLEX PRODUCTS CO.  
 BAJH  
 9-12-80  
 A-2599-NAG