

# CTSPMA6020F Series

From .47µH to 10µH

## SPECIFICATIONS

Parts are available in ±20% inductance tolerance only

Part Number	Inductance (µH)	L Test Condition	DCR Max. (mΩ)	Isat Max. (A)	Irms Max. (A)
CTSPMA6020F-R47M	0.47	100KHz, 1V	5.5	21.0	13.9
CTSPMA6020F-R68M	0.68	100KHz, 1V	7.1	20.0	11.5
CTSPMA6020F-1R0M	1.00	100KHz, 1V	10.6	13.7	9.8
CTSPMA6020F-1R5M	1.50	100KHz, 1V	15.6	13.8	8.0
CTSPMA6020F-2R2M	2.20	100KHz, 1V	17.8	10.0	7.9
CTSPMA6020F-3R3M	3.30	100KHz, 1V	30.2	7.5	5.9
CTSPMA6020F-4R7M	4.70	100KHz, 1V	39.6	6.8	5.1
CTSPMA6020F-6R8M	6.80	100KHz, 1V	63.0	5.2	4.0
CTSPMA6020F-100M	10	100KHz, 1V	96.0	4.4	3.2



## PHYSICAL DIMENSIONS

Size	A	B	C	D	E	F
			Max.	Max.		
mm	7.1±0.2	6.7±0.2	7.1	2.0	2.7	2.7
inches	0.28±0.008	0.26±0.008	0.28	0.079	0.106	0.106
Size	G	H	I	J	K	
mm	1.5	1.65±0.1	3.8	1.85±0.1	3.0	
inches	0.059	0.065±0.004	0.150	0.073±0.004	0.118	

## CHARACTERISTICS

**Description:** SMD (shielded) Power Inductors

**Applications:** Smart phones, Notebook PC's, Tablets, HDD's, Servers, VRM's, Compact power supply modules, etc.

**Saturation Rated Current (Isat):** The DC current when the when the inductance becomes 30% lower than its initial value. (Ta=25°C)

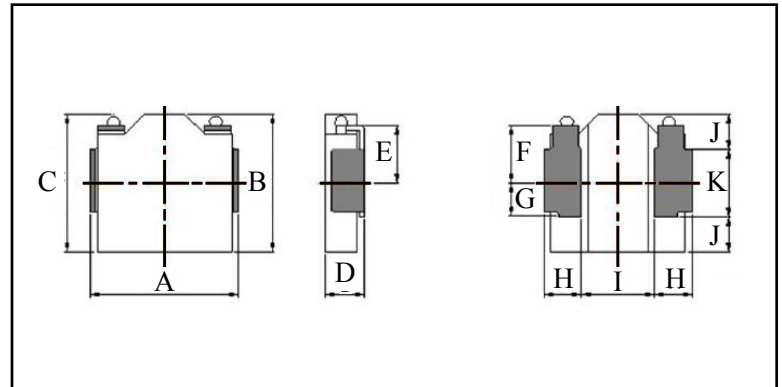
**Temperature Rise Current (Irms):** The actual current when temperature of coil becomes ΔT40°C. (Ta=25°C)

**Operating Temperature Range:** -55°C to 155°C

**Markings:** Inductance Code

**Miscellaneous:** RoHS compliant

**Samples available. See website for ordering information.**



## PAD LAYOUT

