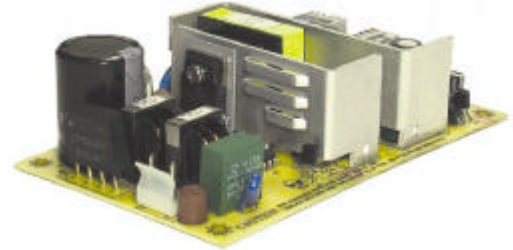


OPEN FRAME

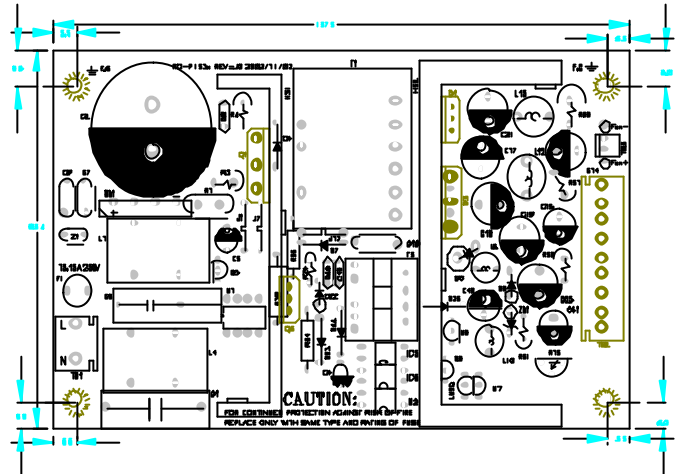
ENO-0680 80W

Features

Open Frame
 Remote on/off sensing, Power good TTL Signal
 Short Circuit, Over Current & Voltage Protection
 High Efficiency



Mechanical Drawing



Apply for

All Intel Processors upto P4
 All AMD Processors upto Athlon

Environmental Specification

Operating / Storage Temp 0 ~ 50°C / -20 ~ 60°C
 Relative Humidity 5 ~ 95%
 Operating / Storage Altitude 10,000 / 50,000 FT
 MTBF 100,000 HRS
 Safety Approvals UL/CUL, TUV,
 EMC Regulations FCC, CE

Electrical Specifications

Input Voltage 110 - 240VAC
 Full range
 Frequency 47 ~ 63 Hz
 Input Current 2A @ 115VAC
 1A @ 230VAC
 Hold up time 16ms@ full load

Output Specification

	Voltage Regulation	Minimum		Peak
		Load	Load	Load
+5Vsb	+/- 5%	0.15A	0.55A	0.6A
+5V	+/- 5%	2.0A	10A	11A
+12V	+/- 5%	0.3A	2.5A	2.8A
-12V	+/- 10%	0.15A	0.55A	0.6A

TB1 : Input Connector Assign

AC L
 AC N

TB2 . Output Connector Assign

+12V Output
 +5V Output
 +5V Output
 Ground
 Ground
 Ground
 -12V Output
 +5Vsb Output
 DC On/Off

Dimension (W x L x H) : 137.5 x 83.4 x 86 mm

USA OFFICE

ENHANCE ELECTRONICS

13100 ALONDRA BLVD., UNIT 106,
 CERRITOS, CA 90703

TEL : +1 562 677 1268 FAX : +1 562 677 126 9
 E-MAIL : sales@enhanceusa.com

WWW.ENHANCEUSA.COM

EUROPE OFFICE

ENHANCE EUROPE INTERPAC B.V

ESSEBAAN 40, 2908 LK CAPELLE
 AAN DEN IJSSEL, THE NETHERLANDS

TEL : +31 10 284 0870 FAX : +31 10 284 0873
 E-MAIL : kathryn@interpacbv.com

WWW.ENHANCE-EUROPE.COM